



Empowering State and Local Partners to Prevent Colorectal Cancer

Shelly Reeter¹, Caleb Nehring², and Kristi Lessen²
¹Illinois Department of Public Health; ²Illinois Cancer Partnership



BACKGROUND

Illinois was one of five states selected to participate in the Comprehensive Cancer Control National Partnership *80% by 2018* forum. The *80% by 2018* initiative brings together diverse organizations in a commitment to ensure 80% of adults aged 50 and older are regularly screened for colorectal cancer (CRC) by 2018. Statewide partners came together to create the Illinois Colorectal Cancer Roundtable (ILCCRT) with the shared goal of presenting evidence-based strategies advancing local implementation of the state cancer plan CRC screening objectives, by collaborating with local health departments and Federally Qualified Health Centers (FQHCs).

COLORECTAL CANCER IN ILLINOIS

36.5% of adults over age 50 **DID NOT meet** CRC screening guidelines

People at average risk of CRC should begin regular screening at age 50. Only a quarter (25.6%) of respondents aged 50 and over has ever had an at-home blood test. Of those, only a third (33.0%) had it within the past year. According to the Illinois Behavioral Risk Factor Surveillance System (BRFSS), 63.5 percent of adults aged 50 to 75 years old met the U.S. Preventive Services Task Force (USPSTF) recommendations for CRC screening in 2016.

According to 2017 Health Resources and Services Administration data, CRC screening rates increased by almost 4% (12,763 individuals) at FQHCs. (<https://bphc.hrsa.gov/uds/datacenter.aspx?year=2017&state=IL>)

CRC is the third leading cause of cancer incidence for both men and women. More than 6,200 people were diagnosed with CRC in 2015 at an age-adjusted rate of 50.7 per 100,000 persons for males and 36.4 per 100,000 for females.¹

9.1% of cancer diagnoses were CRC¹

1 in 10 people who died from cancer died of CRC¹

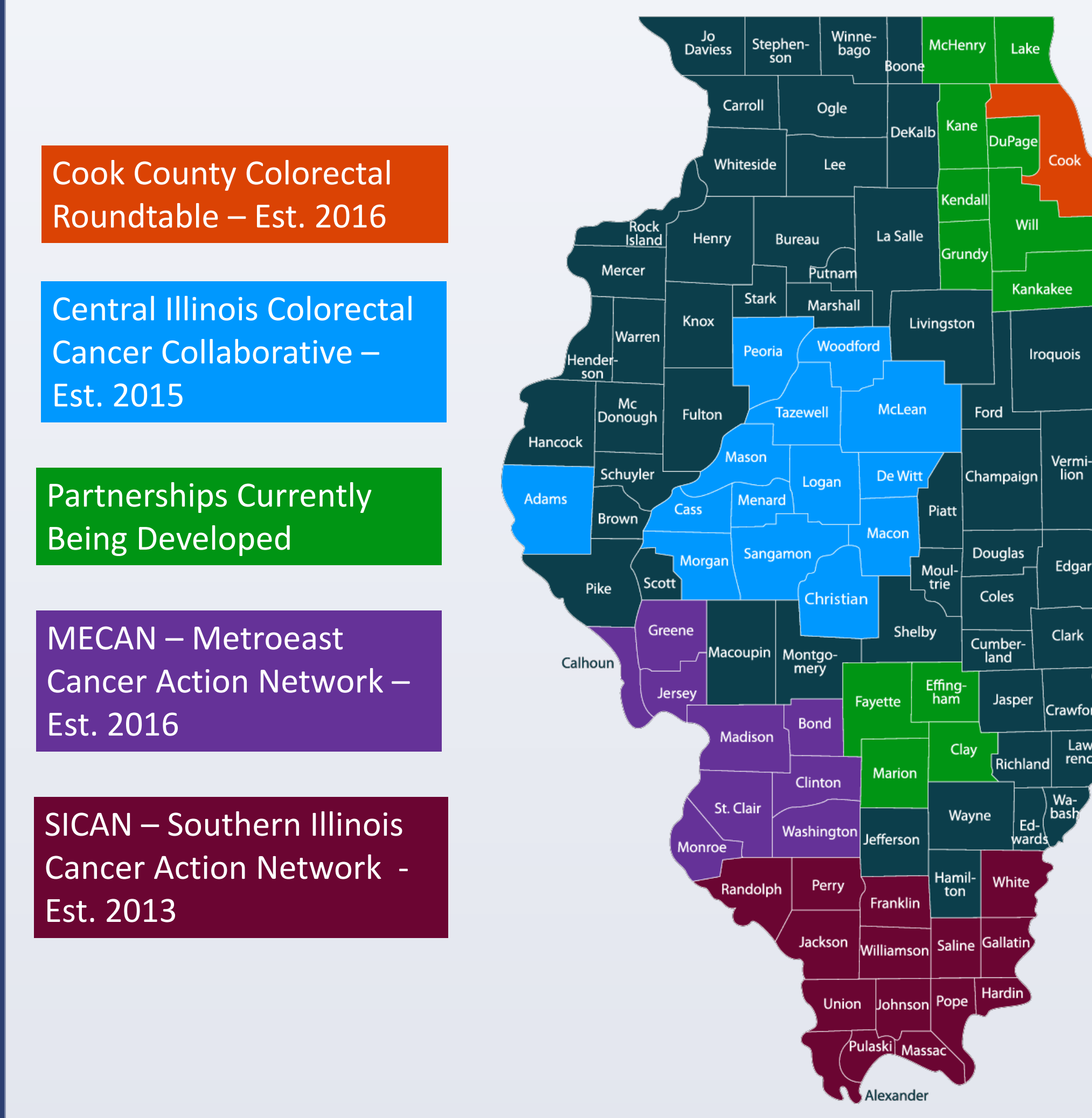
CRC is the third leading cause of cancer mortality for both men and women. In 2015, colorectal cancer accounted for 2,342 deaths.¹

ILCCRT LEARNING OBJECTIVES

- Increase understanding of the colorectal cancer burden in Illinois: third leading cause of cancer incidence and mortality.
- Emphasize importance of detecting colorectal cancer early through screening: highlight state and county data.
- Showcase the value of statewide partnerships and collaboration.



ILCCRT REGIONAL SITES



CONCLUSIONS

Nearly 200 clinical providers, health system administrators, cancer advocates, academic researchers, and community members from a variety of organization types have attended an Illinois CRC Roundtable event (in-person and/or webinar event).

The presenters and presentations were rated as excellent or very good. Most attendees indicated that practical application to their practice or organization and relevance of educational objectives to practice needs were highly important reasons for attending the session.

Over half of webinar attendees reported an intention to make changes to their practice. Cost, reimbursement, insurance issues and patient adherence were listed as important barriers to implementing practice change.

CONTACT INFORMATION

Kristi Lessen
Illinois Cancer Partnership, Co-Chair
217-545-7493
Klessen@siumed.edu

Caleb Nehring
Illinois Cancer Partnership, Co-Chair
618-288-2032
Caleb.nehring@cancer.org

Shelly Reeter
Illinois Department of Public Health
Division of Chronic Disease, Comprehensive Cancer Program Manager
217-558-2640
Shelly.Reeter@Illinois.gov

1. Illinois Department of Public Health, Division of Epidemiologic Studies, Illinois State Cancer Registry, November 2017