

# 2022-2027 ILLINOIS COMPREHENSIVE CANCER CONTROL PLAN PRIORITY AREA: SCREENING AND EARLY DETECTION



Screening is everything. So much depends on when you catch it... Many people aren't aware of their exposure... they don't get the mammograms... pap smears... colonoscopies.

Quote from a rural, non-Hispanic White cancer survivor from community member from central Illinois (2021, Community engagement focus group)



## SCREENING AND EARLY DETECTION GOALS



Increase cancer screenings



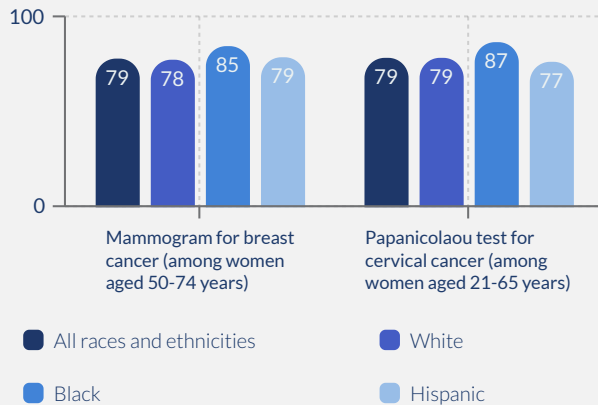
Reduce late-stage cancer diagnosis



Reduce cancer mortality rates

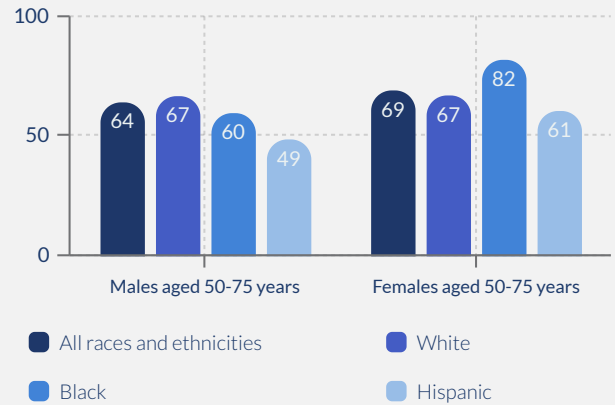
### Prevalence (%) of up-to-date breast and cervical cancer screening by race and ethnicity

Illinois 2018; Age-adjusted prevalence



### Prevalence (%) of up-to-date colorectal cancer screening by race and ethnicity and sex

Illinois 2018; Age-adjusted prevalence



U.S. Cancer Statistics Working Group. U.S. Cancer Statistics Data Visualizations Tool, based on 2020 submission data (1999-2018): U.S. Department of Health and Human Services, Centers for Disease Control and Prevention and National Cancer Institute; [www.cdc.gov/cancer/dataviz](http://www.cdc.gov/cancer/dataviz), released June 2021.

## Learn more

Find objectives and strategies for cancer screening and early detection in the 2022 - 2027 Illinois Comprehensive Cancer Control Plan by scanning the QR code or visiting:

<https://dph.illinois.gov/topics-services/diseases-and-conditions/cancer/2022-2027-illinois-comprehensive-cancer-control-plan.html>



Funding for this work was provided by the Centers for Disease Control and Prevention DP17-1701 grant awarded to the Illinois Department of Public Health.