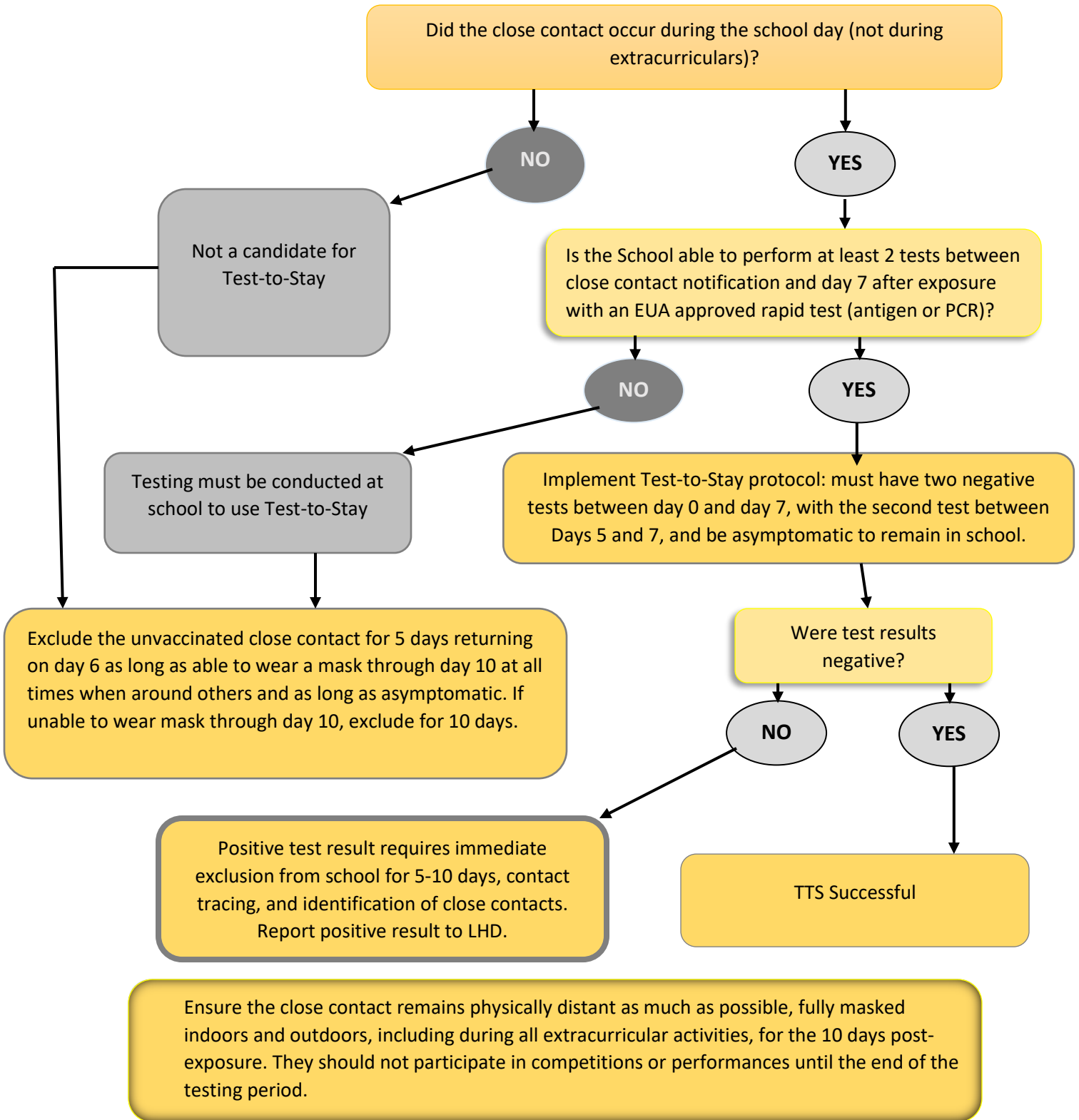


**Test -to-Stay Protocol Flow Chart 1/12/2022
(Students and Staff only¹)**



¹ Persons age 5-17 who have completed COVID-19 primary vaccine series, and for persons age 18 and over who have completed recommended vaccine doses, including boosters, and persons who have completed additional primary shots for some immunocompromised people are not considered close contacts so would not need to be enrolled in Test-to-Stay protocol. However, fully vaccinated persons who have close contact to a confirmed case should test 5 days after close contact.