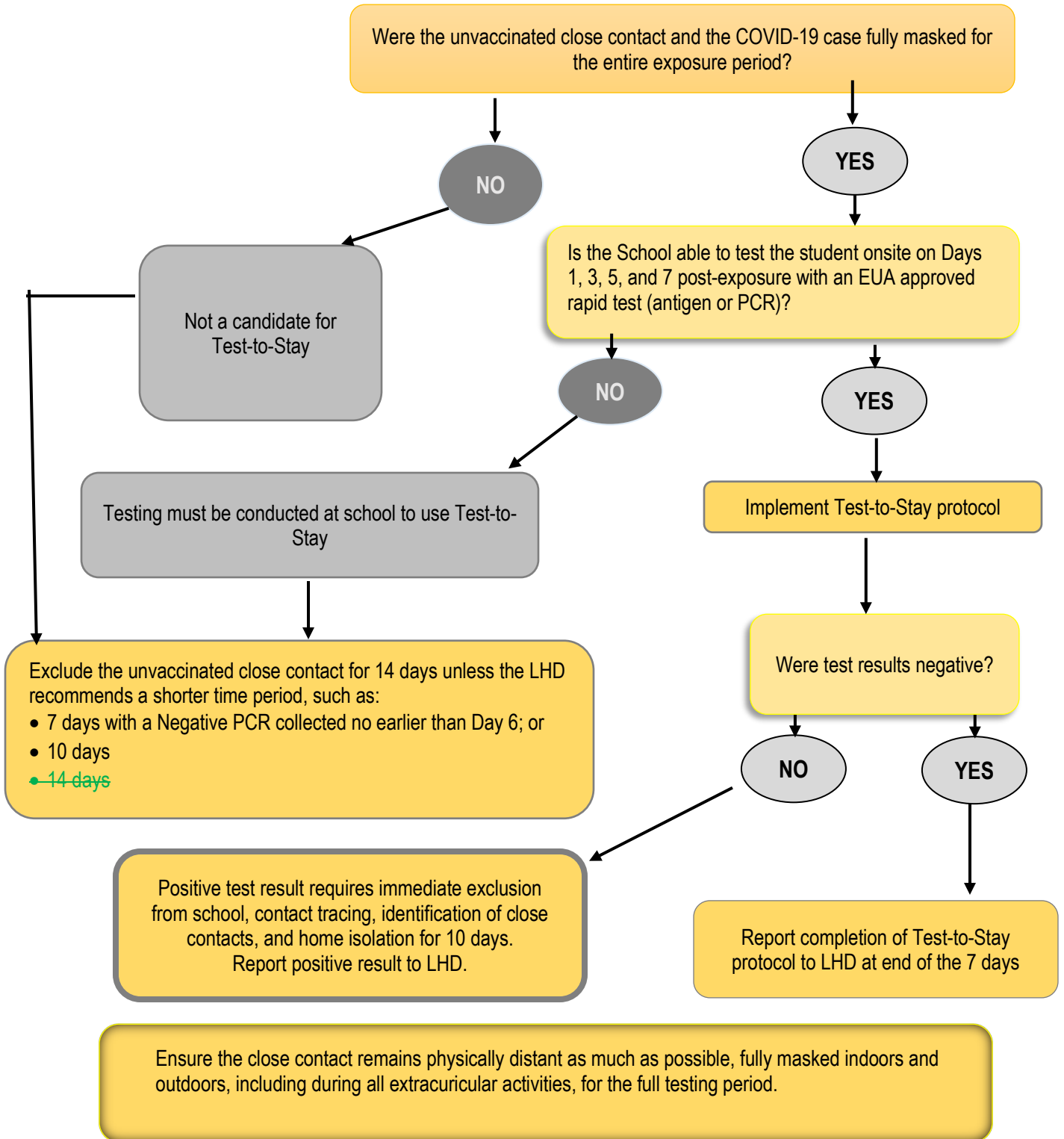


**Test -to-Stay Protocol Flow Chart 10/18/2021
(Applies to Unvaccinated Students and Staff only!)**



1 Fully vaccinated persons are not considered close contacts so would not need to be enrolled in Test -to-Stay protocol. However, fully vaccinated persons who have close contact to a confirmed case should test 5 to 7 days after close contact.