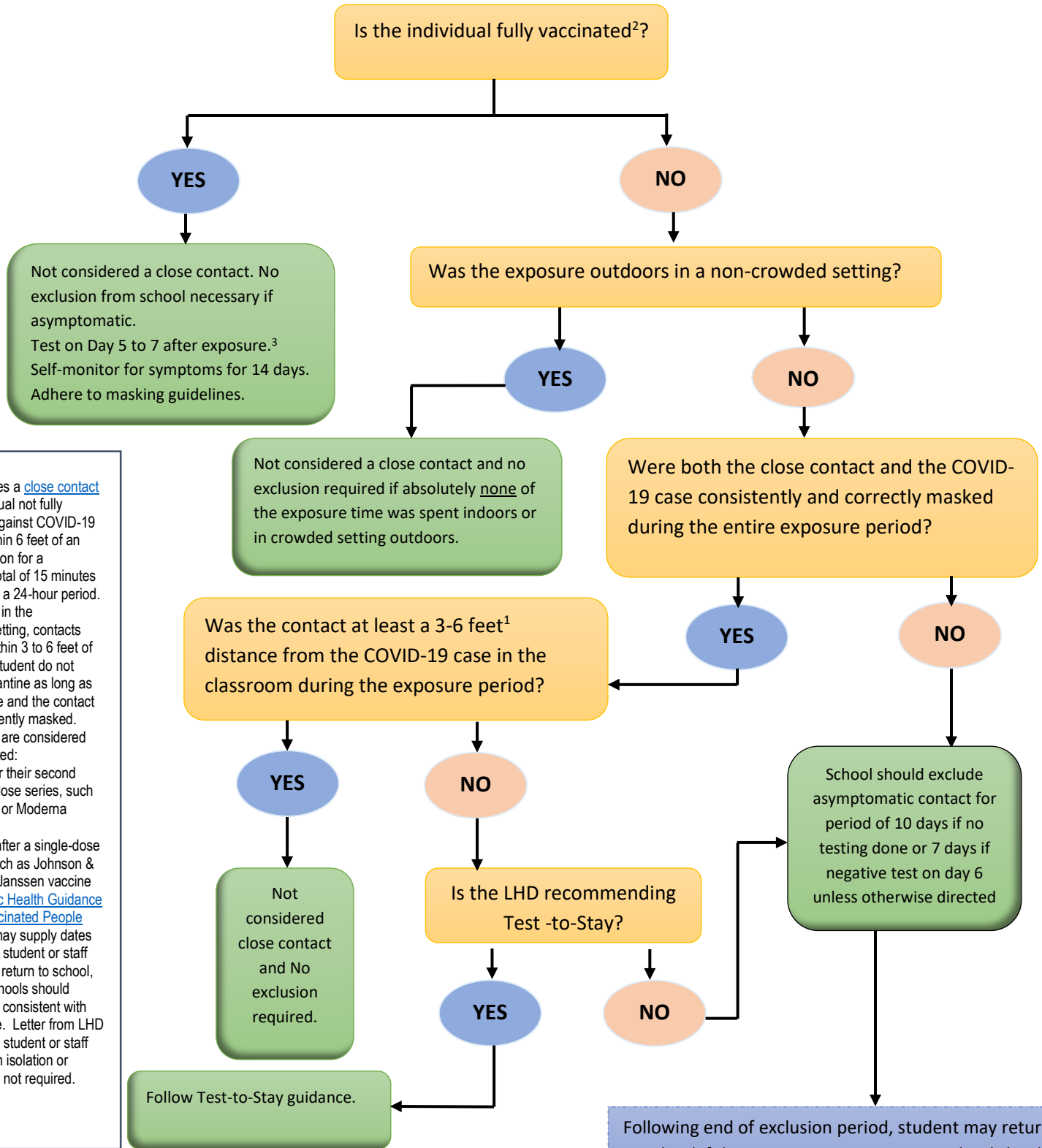


Situation 3: Students or School Personnel who are Close Contacts to a Confirmed COVID-19 Case

Schools should exclude or refuse to admit students and staff after close contact with a confirmed case consistent with the guidelines below, unless otherwise directed by their local health department. An isolation or quarantine order is not required for schools to exclude or refuse to admit students or staff.



References:
 1 CDC defines a [close contact](#) as an individual not fully vaccinated against COVID-19 who was within 6 feet of an infected person for a cumulative total of 15 minutes or more over a 24-hour period. For students in the classroom setting, contacts who were within 3 to 6 feet of an infected student do not require quarantine as long as both the case and the contact were consistently masked.
 2 Individuals are considered fully vaccinated:
 2 weeks after their second dose in a 2-dose series, such as the Pfizer or Moderna vaccines, or
 • 2 weeks after a single-dose vaccine, such as Johnson & Johnson's Janssen vaccine
 3 [CDC Public Health Guidance for Fully Vaccinated People](#)
 4 The LHD may supply dates as to when a student or staff member can return to school, otherwise schools should permit return consistent with this guidance. Letter from LHD releasing the student or staff member from isolation or quarantine is not required.

Following end of exclusion period, student may return to school if they remain asymptomatic. School should require social distancing in school (as much as possible) and consistent masking indoors and outdoors for the full 14 days.