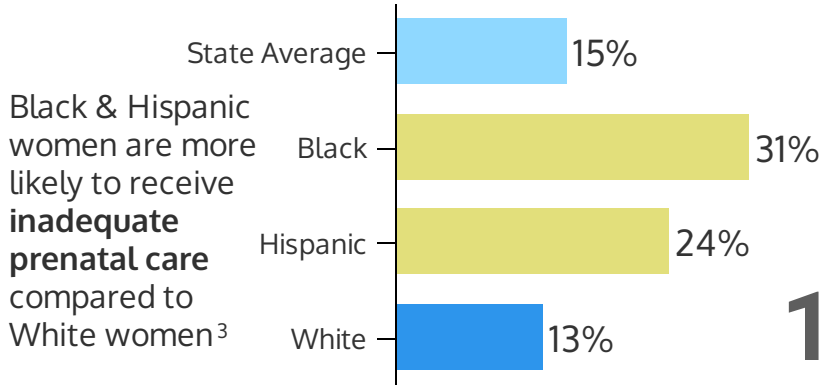
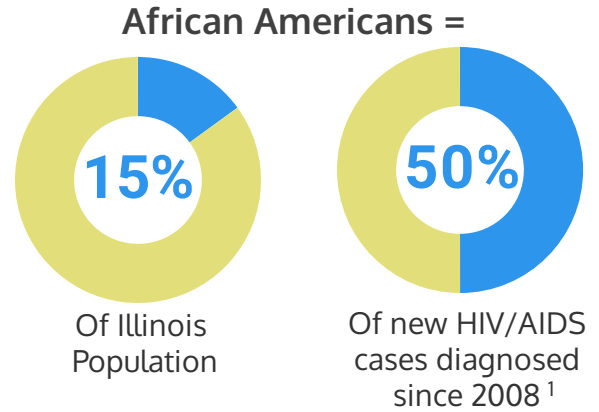


Health Inequities in Illinois

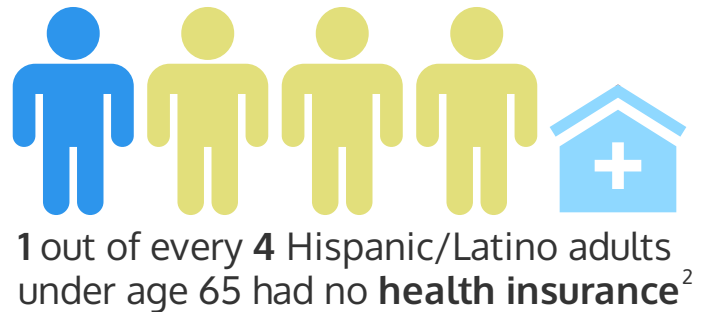
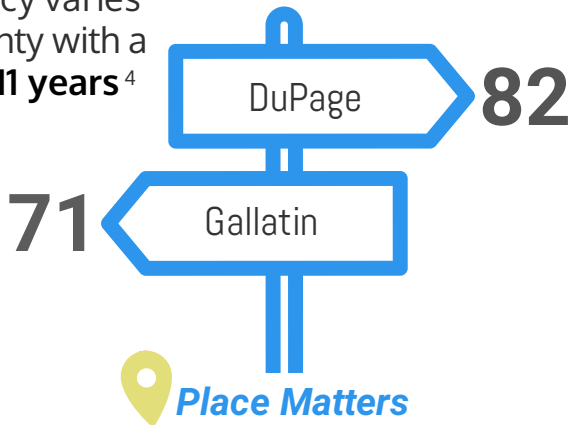
What are Health Inequities?

* The CDC defines health inequity as a difference in health outcomes that is systematic, avoidable, and unjust. Minority populations are disproportionately affected by health inequalities throughout the United States, including Illinois.



14% Prevalence rate of **Diabetes** among African Americans. This is **5%** higher than the prevalence among Whites⁵

Average life expectancy varies by IL county with a range of **11 years**⁴



All numbers are rounded to nearest whole number.

1. IDPH HIV/AIDS Surveillance Unit, all reported cases (regardless of disease stage) 1/1/08-12-31-15.
 2. U.S. Census Bureau, 2009-2013 5-Year American Community Survey.
 3. Illinois PRAMS, 2011.
 4. Life expectancy at birth, 2009-2011, both sexes, IDPH Health Facilities and Services Review Board.
 5. Illinois BRFS, 2014.

Center for Minority Health Services

