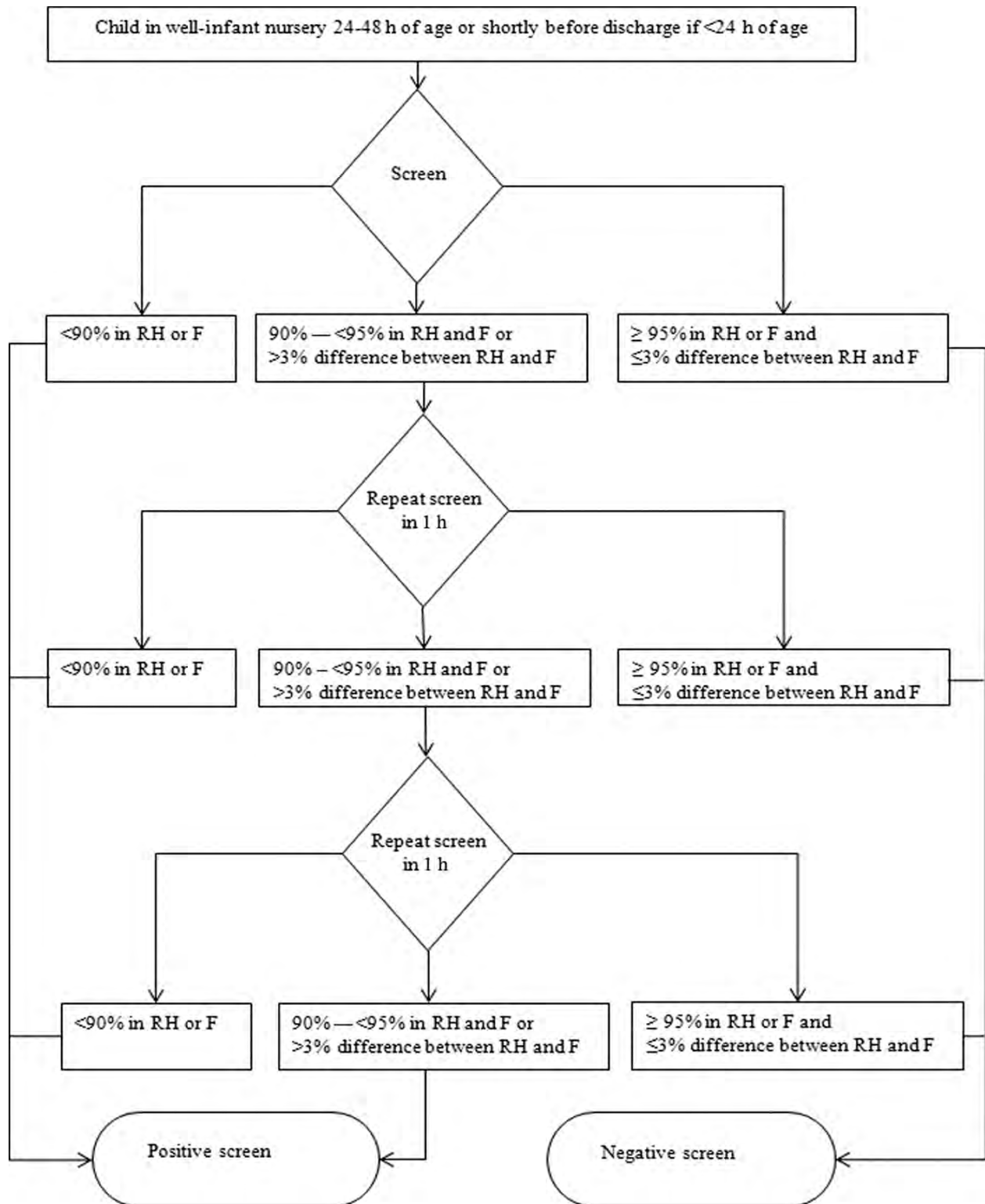


# ILLINOIS DEPARTMENT OF PUBLIC HEALTH PULSE OXIMETRY SCREENING ALGORITHM

IDPH recommends screening for all newborns, including newborns in the neonatal intensive care unit (NICU) who are stable and preparing for discharge.



The proposed pulse-oximetry monitoring protocol based on results from the right hand (RH) and either foot (F).