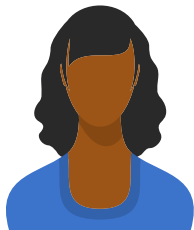


2022-2027 ILLINOIS COMPREHENSIVE CANCER CONTROL PLAN HEALTH EQUITY AND HEALTH DISPARITIES: ACCESS TO CARE



Location does impact survivorship. It impacts people going to the doctor. It impacts how people will make the decisions on what they're going to do to take care of themselves and their family because of a lack of resources or resources that are there that they don't feel like they are deserving of or don't understand them.

Black Non-Hispanic cancer survivor and caregiver from Cook County - 69 years of age (2021, Community engagement focus group)



What is health equity and health disparities?



Health equity



Is the attainment of the highest level of health for all people



Health disparities

Are health differences closely linked with social, economic, and / or environmental disadvantages



What are some strategies to address health disparities?



Community partnerships

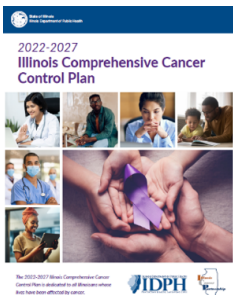


Community health workers



Patient navigators

Learn more



Find more information on health equity strategies in the 2022 - 2027 Illinois Comprehensive Cancer Control Plan by scanning the QR code or visiting:

<https://dph.illinois.gov/topics-services/diseases-and-conditions/cancer/2022-2027-illinois-comprehensive-cancer-control-plan.html>

