



Sexually Transmitted Diseases in Illinois

2016 Epidemiologic Summary and Yearly Trends
Data for 2007-2016

Table of Contents

List of Figures	2
List of Tables	2
Introduction	3
Chlamydia	6
United States versus Illinois	6
Illinois excluding Chicago versus Chicago	6
By Sex	7
By Race/Ethnicity	7
By Age	8
County Map by Chlamydia Cases and Rates	9
Gonorrhea	10
United States versus Illinois	10
Illinois excluding Chicago versus Chicago	10
By Sex	11
By Race/Ethnicity	11
By Age	12
County Map by Gonorrhea Cases and Rates	13
Primary and Secondary Syphilis	14
United States versus Illinois	14
Illinois excluding Chicago versus Chicago	14
By Sex	15
By Race/Ethnicity	15
By Age	16
County Map by Primary and Secondary Syphilis Cases and Rates	17
Congenital Syphilis	18
United States versus Illinois	18
Illinois excluding Chicago versus Chicago	18
Female P&S Rates vs CS Cases	19
Data Tables.....	20
Resources	54

List of Figures

Figure 1. Chlamydia Rates in the United States versus Illinois, 2007-2016.....	6
Figure 2. Chlamydia Rates in Illinois (excluding Chicago) versus Chicago, 2007-2016.....	6
Figure 3. Chlamydia Rates in Illinois by Sex, 2007-2016.....	7
Figure 4. Chlamydia Rates in Illinois by Race/Ethnicity, 2007-2016.....	7
Figure 5. Chlamydia Rates in Illinois by Age Group, 2007-2016.....	8
Figure 6. Gonorrhea Rates in the United States versus Illinois, 2007-2016.....	10
Figure 7. Gonorrhea Rates in Illinois (excluding Chicago) versus Chicago, 2007-2016.....	10
Figure 8. Gonorrhea Rates in Illinois by Sex, 2007-2016.....	11
Figure 9. Gonorrhea Rates in Illinois by Race/Ethnicity, 2007-2016.....	11
Figure 10. Gonorrhea Rates in Illinois by Age Group, 2007-2016.....	12
Figure 11. Primary and Secondary Syphilis Rates in the United States versus Illinois, 2007-2016.....	14
Figure 12. Primary and Secondary Syphilis Rates in Illinois (excluding Chicago) versus Chicago, 2007-2016.....	14
Figure 13. Primary and Secondary Syphilis Rates in Illinois by Sex, 2007-2016.....	15
Figure 14. Primary and Secondary Syphilis Rates in Illinois by Race/Ethnicity, 2007-2016.....	15
Figure 15. Primary and Secondary Syphilis Rates in Illinois by Age Group, 2007-2016.....	16
Figure 16. Congenital Syphilis Rates in the United States versus Illinois, 2007-2016.....	18
Figure 17. Congenital Syphilis Rates in Illinois (excluding Chicago) versus Chicago, 2007-2016.....	18
Figure 18. Congenital Syphilis Cases and Primary and Secondary Syphilis Rates among Females in Illinois, 2007-2016.....	19

List of Tables

Table 1. Illinois Reported STD Cases by Sex, 2007-2016.....	20
Table 2. Illinois Reported STD Rates per 100,000 Population by Sex, 2007-2016.....	21
Table 3. Illinois Reported STD Cases by Race/Ethnicity, 2007-2016.....	22
Table 4. Illinois Reported STD Rates per 100,000 Population by Race/Ethnicity, 2007-2016.....	24
Table 5. Illinois Reported STD Cases by Age, 2007-2016.....	26
Table 6. Illinois Reported STD Rates per 100,000 Population by Age, 2007-2016.....	28
Table 7. Illinois Reported Chlamydia Cases by County, 2007-2016.....	30
Table 8. Illinois Reported Chlamydia Rates per 100,000 Population by County, 2007-2016.....	33
Table 9. Illinois Reported Gonorrhea Cases by County, 2007-2016.....	36
Table 10. Illinois Reported Gonorrhea Rates per 100,000 Population by County, 2007-2016.....	39
Table 11. Illinois Reported Primary and Secondary Syphilis Cases by County, 2007-2016.....	42
Table 12. Illinois Reported Primary and Secondary Syphilis Rates per 100,000 Population by County, 2007-2016.....	45
Table 13. Illinois Reported Early Syphilis Cases by County, 2007-2016.....	48
Table 14. Illinois Reported Early Syphilis Rates per 100,000 Population by County, 2007-2016.....	51
Table 15. Illinois Reported Congenital Syphilis Cases and Rates per 100,000 Live Births, 2007-2016.....	53

Introduction

The Sexually Transmitted Diseases (STDs) required by law to be reported in Illinois are chlamydia, gonorrhea, syphilis, HIV, and chancroid. In Illinois, the Illinois Department of Public Health (IDPH) HIV/AIDS Section and the Sexually Transmitted Diseases Section are separate and this surveillance report will focus on the reportable STDs, excluding HIV. In 2016, the three main reportable STDs- chlamydia, gonorrhea, and syphilis-all increased in Illinois for the second year in a row mirroring trends seen nationally. Certain groups were more affected than others - adolescents and young adults were disproportionately affected by gonorrhea and chlamydia and men who have sex with men (MSM) were disproportionately affected by syphilis. By race/ethnicity, black non-Hispanics continue to be disproportionately affected by chlamydia, gonorrhea, and syphilis.

Routine screening, adequate treatment, and providing partner services for individuals infected with STDs are vital steps to help decrease the disease burden in Illinois. These steps are also important as any sexual transmitted infection greatly increases a person's risk of HIV acquisition and transmission or lead to severe and potentially life-threatening complications.

Chlamydia

Chlamydia infection, caused by the bacterium *Chlamydia trachomatis*, is the most commonly reported notifiable infection in the United States and in Illinois. The populations most affected by chlamydia infection are adolescent and young adult females. Many people infected with chlamydia do not have any symptoms. If left untreated, chlamydia infections can lead to serious long-term complications including infertility, pelvic inflammatory disease (PID), ectopic pregnancy, or lymphogranuloma venereum (LGV). Due to many cases being asymptomatic, the long-term effects of untreated infections, and the populations affected, routine screening for chlamydia is recommended by several organizations, including the Centers for Disease Control and Prevention (CDC) and the U.S. Preventive Services Task Force (USPSTF), for sexually active adolescent and young adult females. Pregnant females can pass a chlamydia infection to their baby during delivery causing ophthalmia neonatorum that can lead to blindness or pneumonia in an infant. Chlamydia can be easily treated and cured with antibiotics recommended by the CDC.

Gonorrhea

Gonorrhea infection, caused by the bacterium *Neisseria gonorrhoeae*, is the second most commonly reported notifiable infection in the United States and in Illinois. The populations most affected by gonorrhea infections are adolescent and young adult females and males. Similar to chlamydia infection, many cases are asymptomatic, and if left untreated, gonorrhea infections can lead to serious long-term complications such as infertility, PID, or disseminated infection in the blood or joints. Pregnant females can also pass a gonorrhea infection to their baby during delivery resulting in ophthalmia neonatorum or disseminated gonococcal infection in an infant. Gonorrhea infections have increasingly become resistant to the common antibiotics used for treatment. Infections can still be easily treated and cured using dual therapy (a combination of two antibiotics) recommended by the CDC.

Syphilis

Syphilis infections were once on the decline, but since the year 2000 have continued to increase each year. Syphilis infection is caused by the bacterium *Treponema pallidum* and may present with a variety of symptoms. The populations affected most by syphilis infection are males, specifically gay, bisexual, and other men who have sex with men (collectively known as MSM). Serious complications can occur if syphilis infections are left untreated or not adequately treated. Syphilis is classified into different stages based on when the infection occurred. Early syphilis is defined as an infection that occurred within the previous twelve months and is categorized by the stages of primary, secondary, and early latent. Late syphilis is defined as an infection that occurred more than twelve months ago and contains the stage late latent. This document will focus on the early stages of primary and secondary syphilis due to the fact that they are considered the most infectious stages and are the best indicators of recent infection. Nationally and in Illinois, there has been a high HIV and syphilis co-infection rate among MSM. In 2016, 87.4% of primary and secondary syphilis cases in Illinois were among MSM where sex of sex partner was known. Of the primary and secondary cases in MSM, 53% were co-infected with HIV where HIV status was known. Syphilis continues to be easily treated and cured with antibiotics recommended by the CDC.

Congenital Syphilis

While the majority of syphilis infections are occurring in males, the rate of infected females continues to grow, subsequently increasing the chances of a pregnant female becoming infected. Syphilis infections can be passed from a female to her fetus during pregnancy. Screening for syphilis of all pregnant females is recommended due to the risk of fetal infection. In Illinois, it is required by law that pregnant females be screened for syphilis at their first prenatal examination and during their third trimester. If a pregnant female is not appropriately treated during pregnancy, a baby or child may be diagnosed with congenital syphilis. Untreated syphilis in pregnant females can result in stillbirth or death from infection shortly after birth, and babies may manifest with neurologic issues, bone deformity, enlarged liver and spleen, seizures, or developmental delays. Congenital syphilis may present as a variety of symptoms and a combination of serologic and physical tests are recommended for evaluation. Congenital syphilis can be treated with antibiotics recommended by the CDC.

Chancroid

Chancroid infection is an ulcerative disease caused by the bacterium *Haemophilus ducreyi*. There has not been a case of chancroid reported in Illinois since 1997. In 2016, there were a total of seven cases reported in the United States and six states reported one or more cases of chancroid.

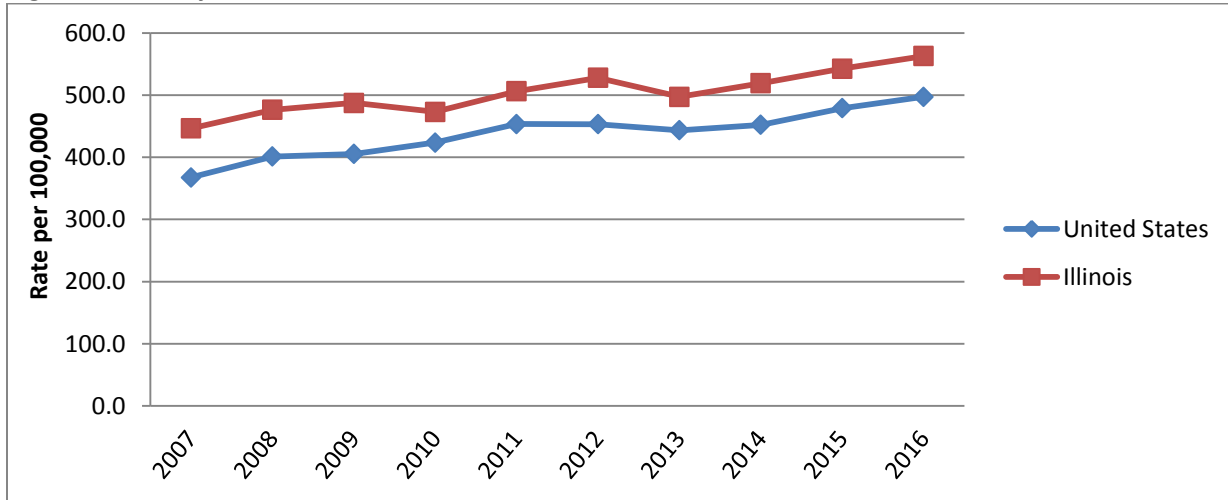
Please note: All data presented are from the last ten years, 2007-2016. All rates are the number of cases per 100,000 population. Rates for the years 2007-2009 are calculated using the 2000 U.S. Census Bureau population estimates. Rates for the years 2010-2016 are calculated using the 2010 U.S. Census Bureau population estimates. Congenital syphilis rates are the number of cases per 100,000 live births and are reported by year of birth. Due to differences in total live births data and case classification by the CDC, the Illinois congenital syphilis cases and rates reported from the CDC differ from the cases and rates Illinois reports. The congenital syphilis rates presented in this report use the total live births and cases reported by IDPH.

Chlamydia

United States versus Illinois

In 2016, the chlamydia rate in the United States was 497.3 per 100,000 population with 1,598,354 cases reported nationally. In Illinois, the chlamydia rate was 562.7 per 100,000 population with 72,201 cases reported. Illinois ranked 10th out of all 50 states by chlamydia rate in 2016. The chlamydia rate in Illinois continues to be above the national rate.

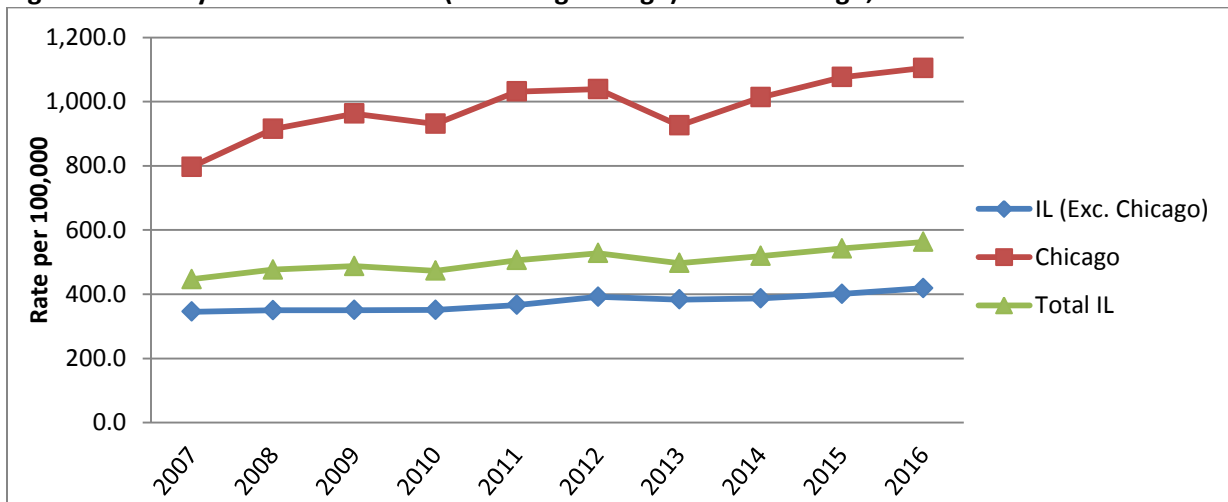
Figure 1. Chlamydia Rates in the United States versus Illinois, 2007-2016



Illinois excluding Chicago versus Chicago

The rate of chlamydia cases in the city of Chicago continues to be above the state rate with a 2016 rate of 1,104.6 per 100,000 population in Chicago compared to the 2016 state rate of 562.7 per 100,000 population. In 2016, Illinois (excluding Chicago) reported 58.8% (42,425) of the chlamydia cases in Illinois while the city of Chicago reported 41.2% (29,776) of the cases.

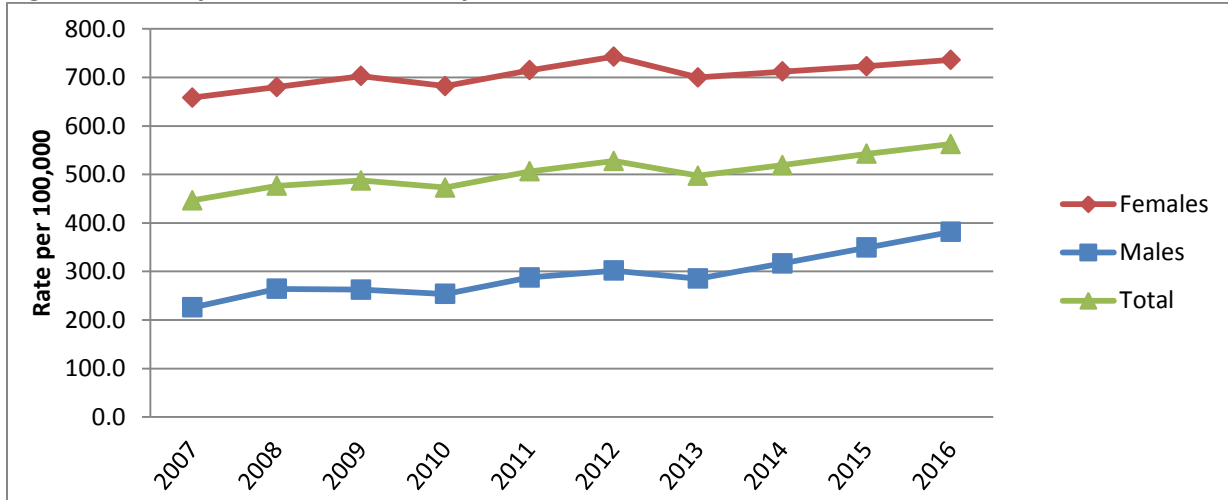
Figure 2. Chlamydia Rates in Illinois (excluding Chicago) versus Chicago, 2007-2016



By Sex

The chlamydia rates in females are almost twice as much as the rates in males with a 2016 rate of 736.1 per 100,000 population in females and 381.5 per 100,000 population in males. Females continue to make up more of the chlamydia cases reported each year. In 2016, 66.7% (48,128) of the chlamydia cases were in females and 33.3% (24,008) of the cases were in males.

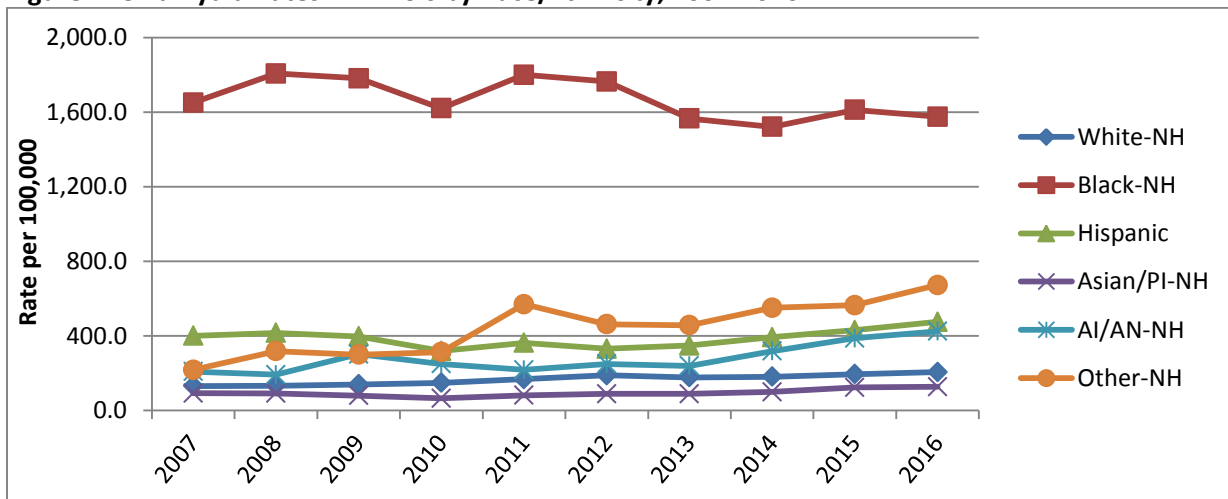
Figure 3. Chlamydia Rates in Illinois by Sex, 2007-2016



By Race/Ethnicity

Chlamydia rates disproportionately affect the black non-Hispanic population more than any other group. In 2016 the chlamydia rates were 1,575.2 per 100,000 population in black non-Hispanics, 672.6 per 100,000 population in other non-Hispanics, 474.9 per 100,000 population in Hispanics, 424.4 per 100,000 population in American Indian/Alaskan Native non-Hispanics, 205.8 per 100,000 population in white non-Hispanics, and 126.8 per 100,000 population in Asian/Pacific Islander non-Hispanics. Many chlamydia cases are reported without a race/ethnicity with 20.4% (14,726) of cases reported unknown in 2016.

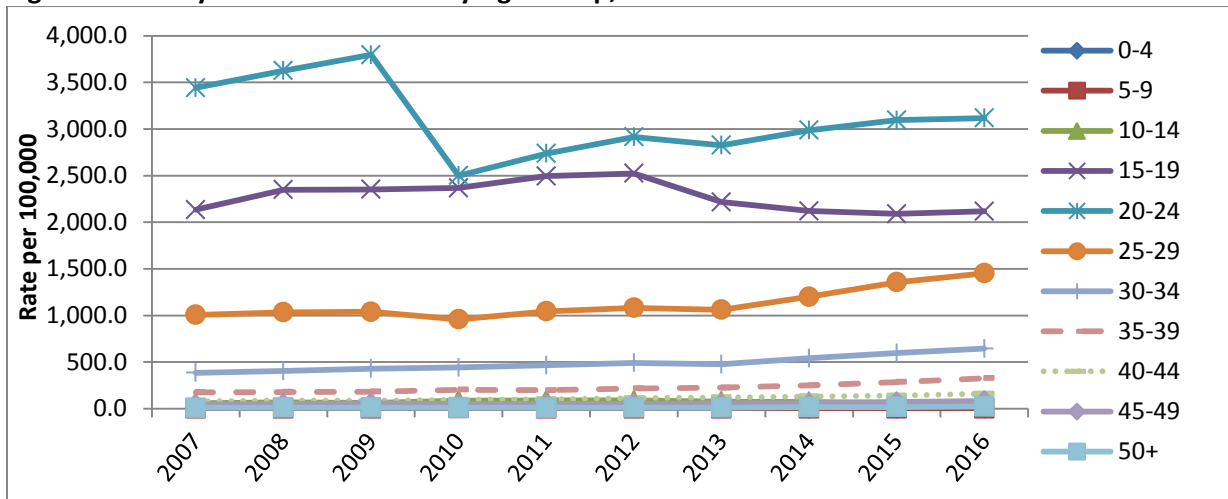
Figure 4. Chlamydia Rates in Illinois by Race/Ethnicity, 2007-2016



By Age

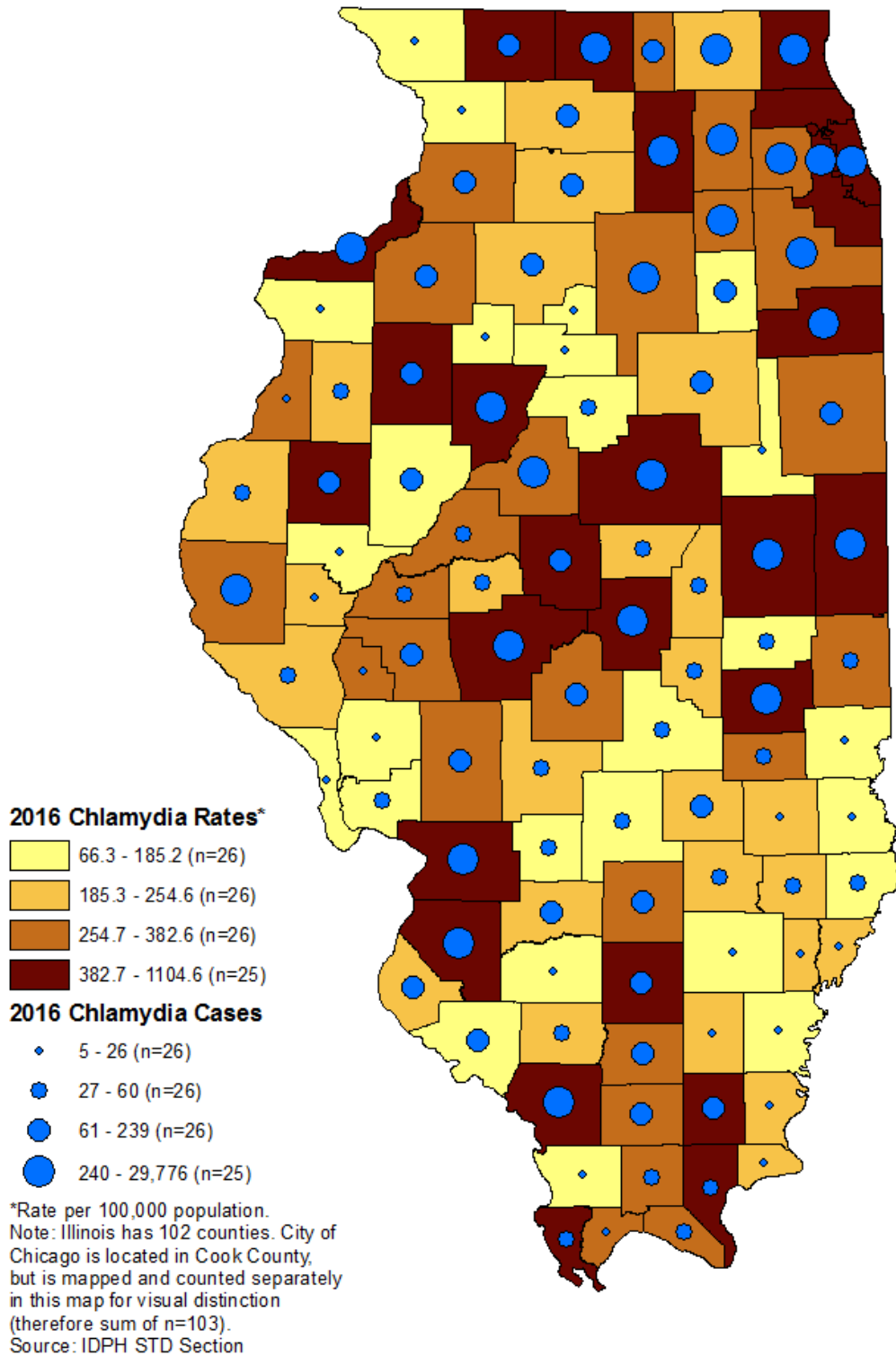
The age groups most affected by chlamydia are the 15-19 year olds and the 20-24 year olds. These groups have the highest rates of chlamydia with a rate in the 15-19 year olds of 2,116.2 per 100,000 and a rate in the 20-24 year olds of 3,118.0 per 100,000 population. These two age groups made up 65% (46,919) of the cases reported in 2016. Please see the tables at the end of this report for a description of the cases and rates in each age group.

Figure 5. Chlamydia Rates in Illinois by Age Group, 2007-2016



County Map by Chlamydia Cases and Rates

The below map shows the 2016 chlamydia cases and rates of each county in Illinois and the city of Chicago grouped by quartile. Please see the tables at the end of this report for each jurisdiction's data.

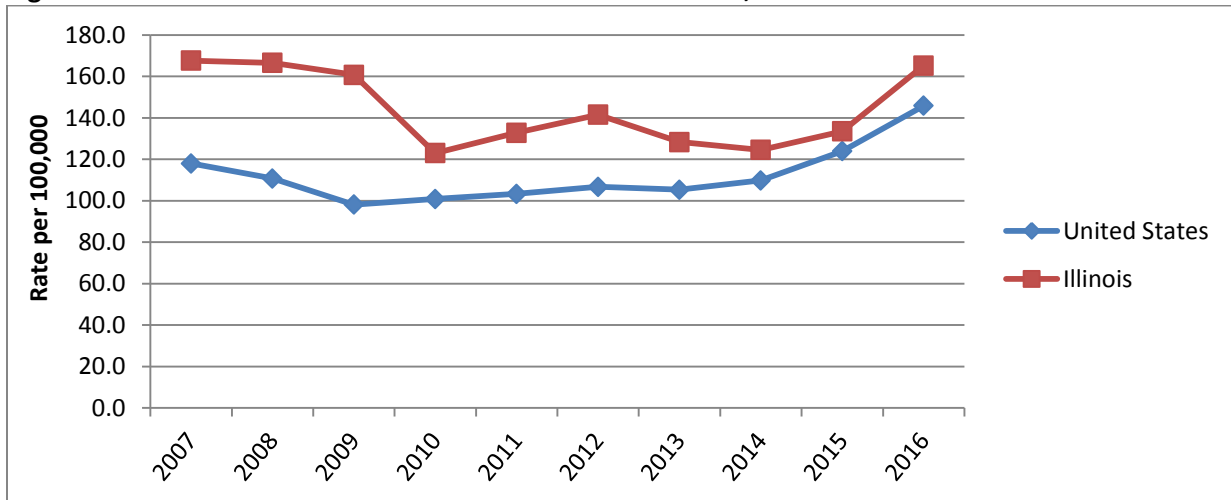


Gonorrhea

United States versus Illinois

In 2016, the gonorrhea rate in the United States was 145.8 per 100,000 population with 468,514 cases reported nationally. In Illinois, the gonorrhea rate was 165.2 per 100,000 population with 21,199 cases reported. Illinois ranked 15th out of all 50 states by gonorrhea rate in 2016. The gonorrhea rate in Illinois continues to be higher than the national rate.

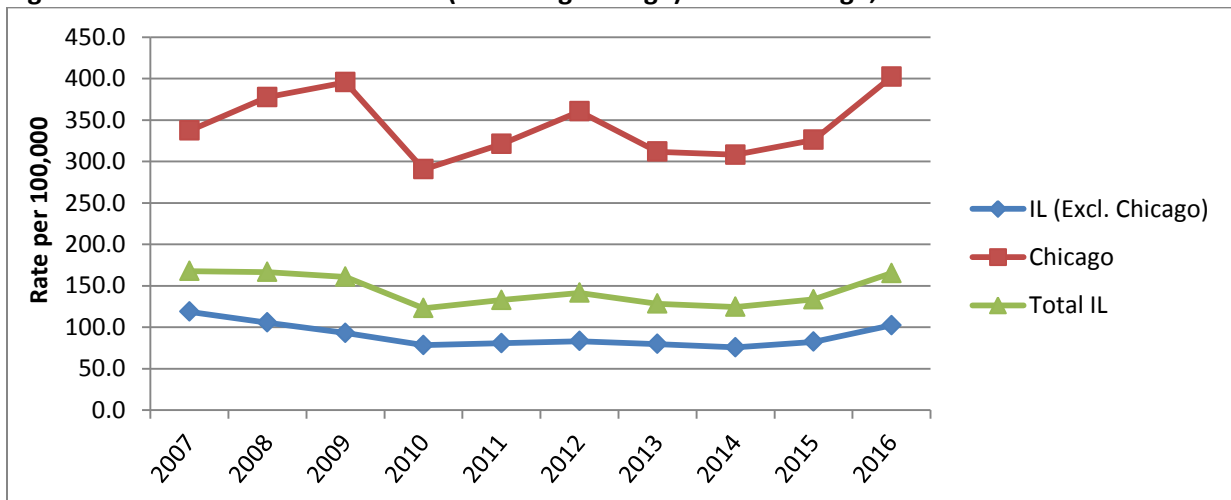
Figure 6. Gonorrhea Rates in the United States versus Illinois, 2007-2016



Illinois excluding Chicago versus Chicago

The rate of gonorrhea cases in the city of Chicago continues to exceed the state rate with a 2016 rate of 402.0 per 100,000 population in Chicago compared to the 2016 state rate of 165.2 per 100,000 population. In 2016, Illinois (excluding Chicago) reported 48.9% (10,363) of the gonorrhea cases in Illinois while the city of Chicago reported 51.1% (10,836) of the cases.

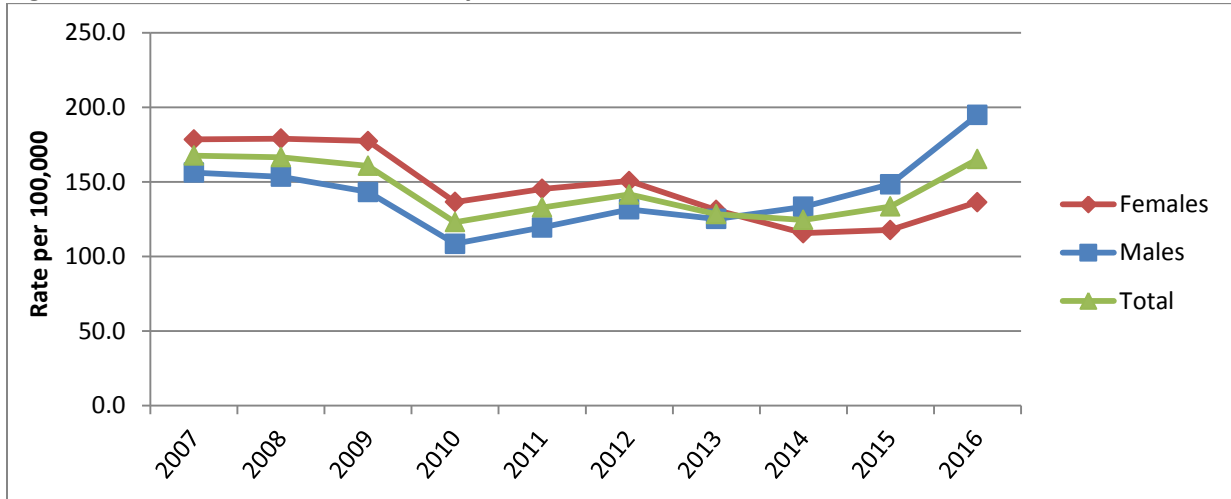
Figure 7. Gonorrhea Rates in Illinois (excluding Chicago) versus Chicago, 2007-2016



By Sex

After several years of gonorrhea rates being close to even in males and females, males have started having higher gonorrhea rates than females. The 2016 rates were 194.8 per 100,000 population in males and 136.4 per 100,000 population in females. In 2016, 57.8% (12,255) of the gonorrhea cases were in males and 42.1% (8,920) of the cases were in females.

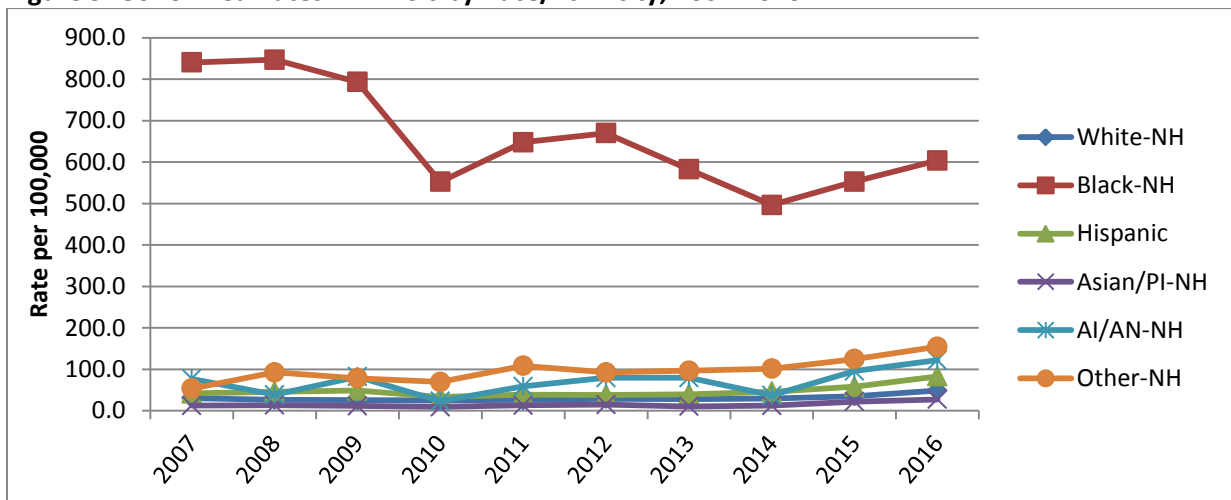
Figure 8. Gonorrhea Rates in Illinois by Sex, 2007-2016



By Race/Ethnicity

Gonorrhea rates disproportionately affect the black non-Hispanic population more than any other group. In 2016 the gonorrhea rates were 603.7 per 100,000 population in black non-Hispanics, 154.5 per 100,000 population in other non-Hispanics, 122.0 per 100,000 population in American Indian/Alaskan Native non-Hispanics, 82.8 per 100,000 population in Hispanics, 48.6 per 100,000 population in white non-Hispanics, and 27.4 per 100,000 population in Asian/Pacific Islander non-Hispanics. Many gonorrhea cases are reported without a race/ethnicity with 18.8% (3,992) of cases reported unknown in 2016.

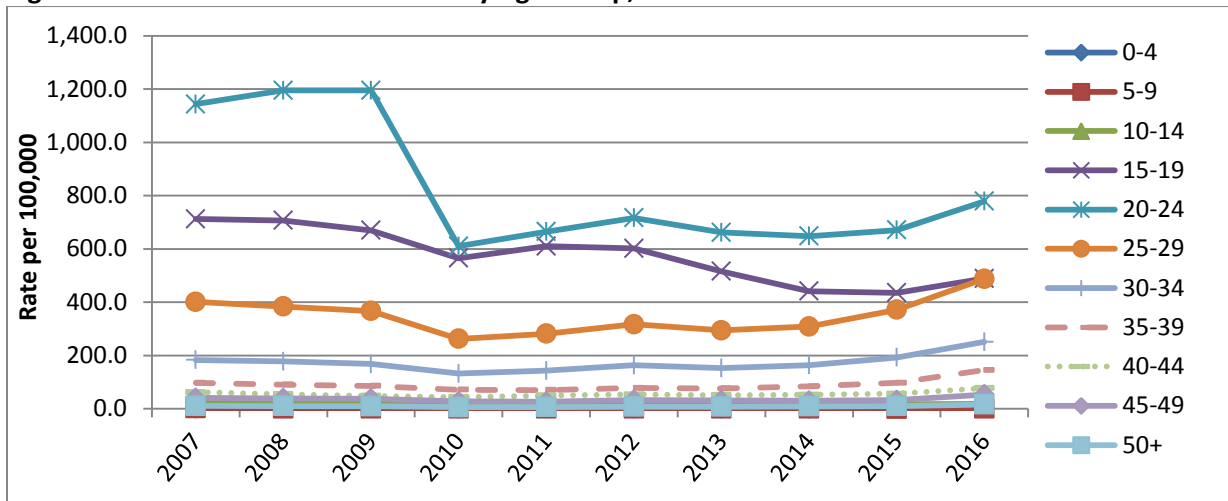
Figure 9. Gonorrhea Rates in Illinois by Race/Ethnicity, 2007-2016



By Age

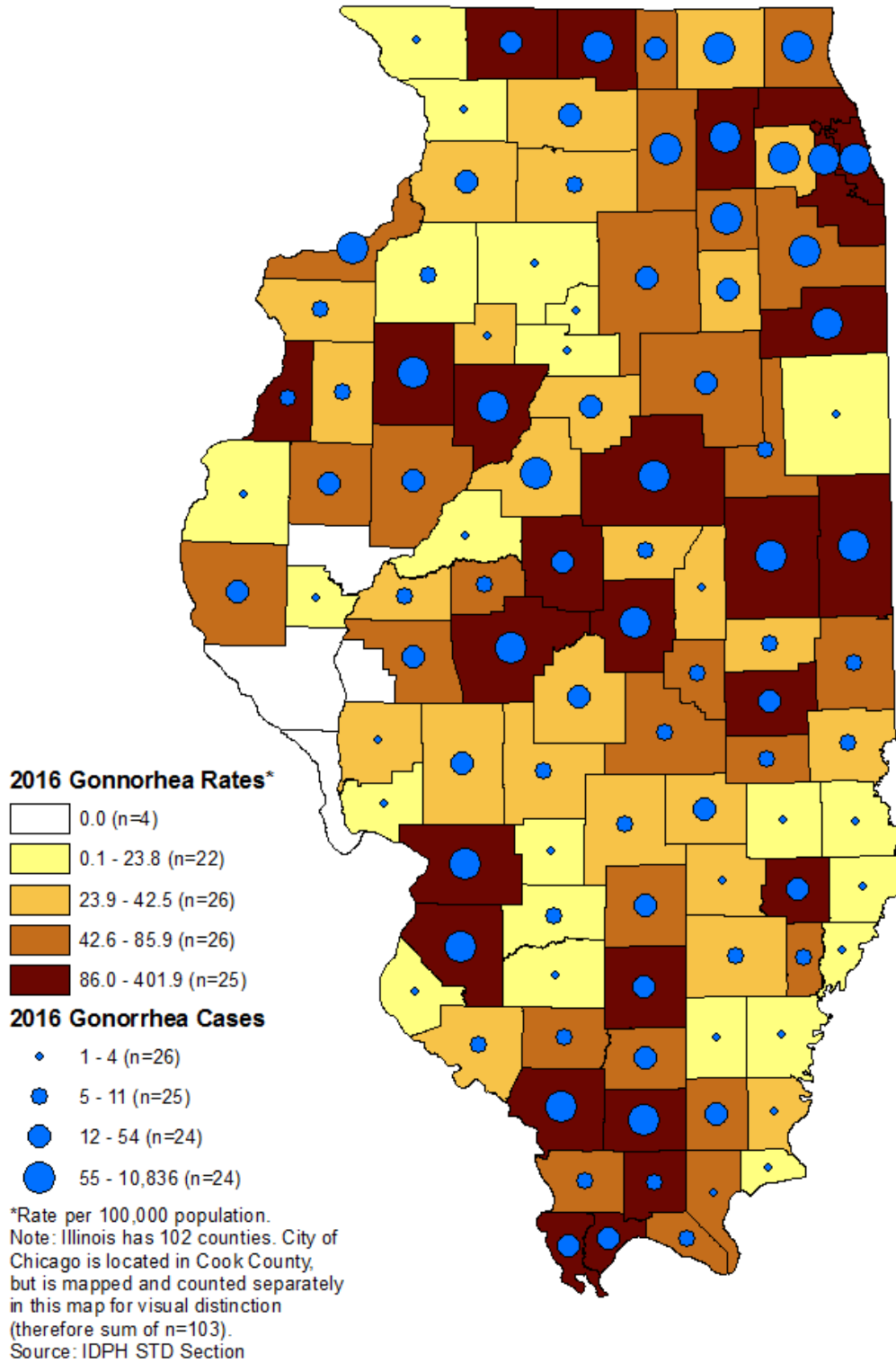
The age groups most affected by gonorrhea are the 15-19 year olds, the 20-24 year olds, and the 25-29 year olds. These groups have the highest rates of gonorrhea with rates of 488.6 per 100,000 in the 15-19 year olds, 779.0 per 100,000 in the 20-24 year olds, and 487.3 per 100,000 in the 25-29 year olds. These age groups made up 74.5% (15,788) of the cases reported in 2016. Please see the tables at the end of this report for a description of the cases and rates in each age group.

Figure 10. Gonorrhea Rates in Illinois by Age Group, 2007-2016



County Map by Gonorrhea Cases and Rates

The map below shows the 2016 gonorrhea cases and rates of each county in Illinois and the city of Chicago grouped by quartile. Please see the tables at the end of this report for each jurisdiction's data.

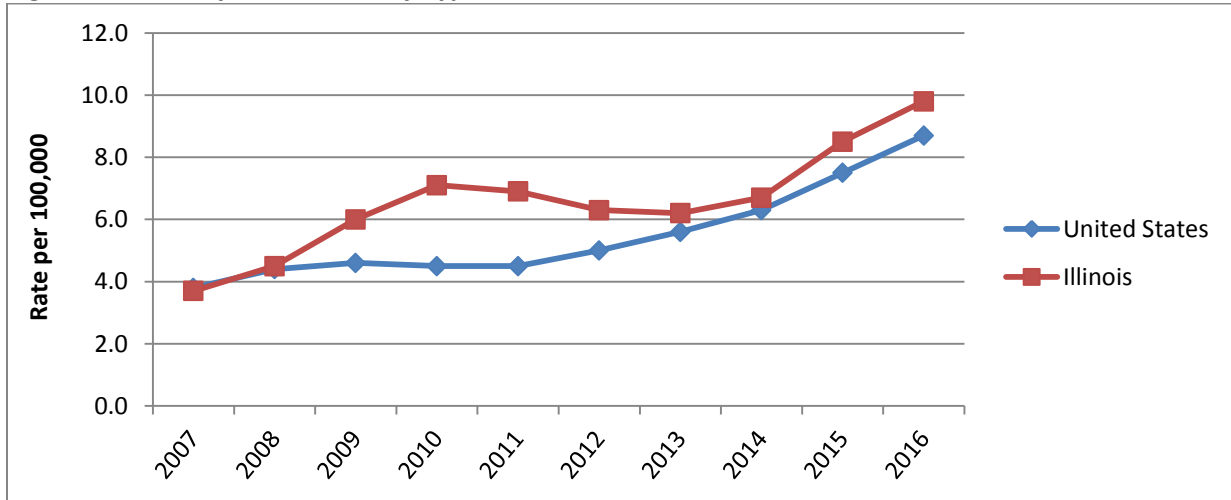


Primary and Secondary Syphilis

United States versus Illinois

In 2016, the primary and secondary syphilis rate in the United States was 8.7 per 100,000 with 27,814 cases reported nationally. In Illinois, the primary and secondary syphilis rate was 9.8 per 100,000 population with 1,260 cases reported. Illinois ranked 10th out of all 50 states by primary and secondary syphilis rate in 2016.

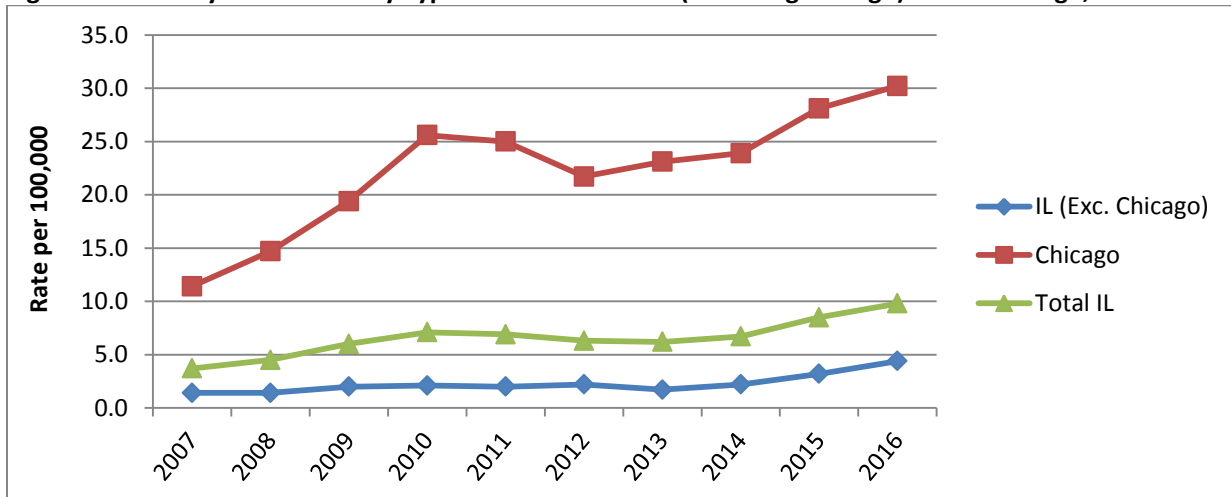
Figure 11. Primary and Secondary Syphilis Rates in the United States versus Illinois, 2007-2016



Illinois excluding Chicago versus Chicago

The rate of primary and secondary syphilis cases in the city of Chicago continues to be above the state rate with a 2016 rate of 30.2 per 100,000 population in Chicago compared to the 2016 state rate of 9.8 per 100,000 population. In 2016, Illinois (excluding Chicago) reported 35.5% (447) of the primary and secondary syphilis cases in Illinois while the city of Chicago reported 64.5% (813) of the cases.

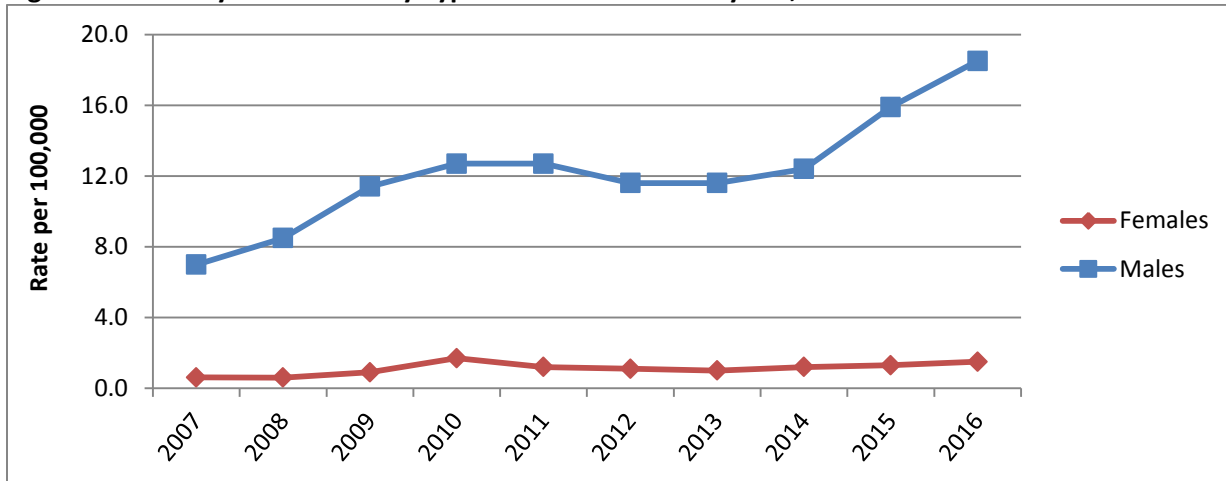
Figure 12. Primary and Secondary Syphilis Rates in Illinois (excluding Chicago) versus Chicago, 2007-2016



By Sex

Males continue to have a much higher rate of primary and secondary syphilis than females. The 2016 rates were 18.5 per 100,000 population in males and 1.5 per 100,000 population in females. In 2016, 92.5% (1,165) of the primary and secondary syphilis cases were in males and 7.5% (95) of the cases were in females.

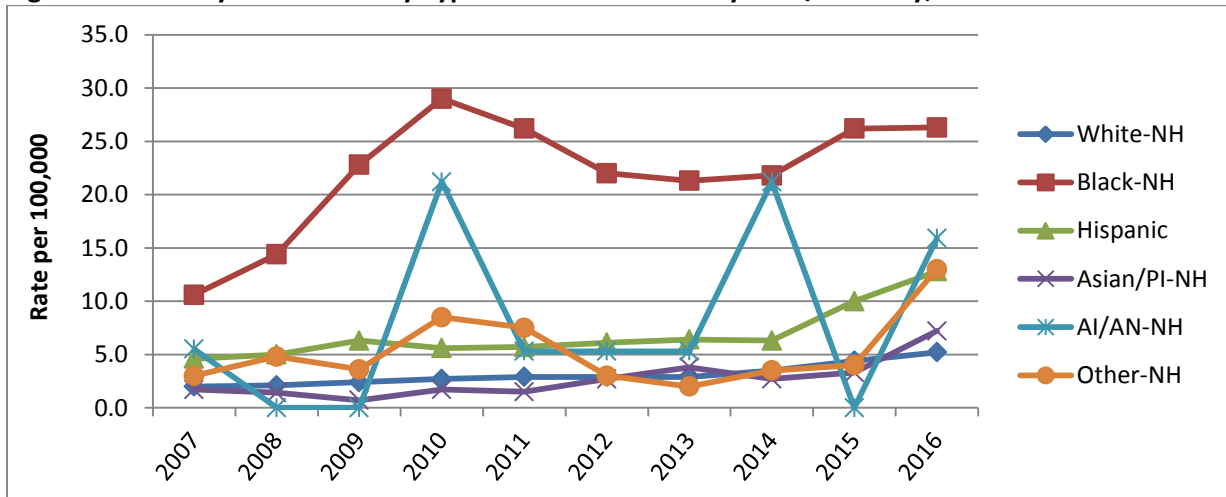
Figure 13. Primary and Secondary Syphilis Rates in Illinois by Sex, 2007-2016



By Race/Ethnicity

Primary and secondary syphilis rates are higher in black non-Hispanics. In 2016 the primary and secondary syphilis rates were 26.3 per 100,000 population in black non-Hispanics, 15.9 per 100,000 population in American Indian/Alaskan Native non-Hispanics, 13.0 per 100,000 population in other non-Hispanics, 12.8 per 100,000 population in Hispanics, 7.2 per 100,000 population in Asian/Pacific Islander non-Hispanics, and 5.2 per 100,000 population in white non-Hispanics. Some primary and secondary syphilis cases are reported without a race/ethnicity with 1.8% (23) of cases reported unknown in 2016.

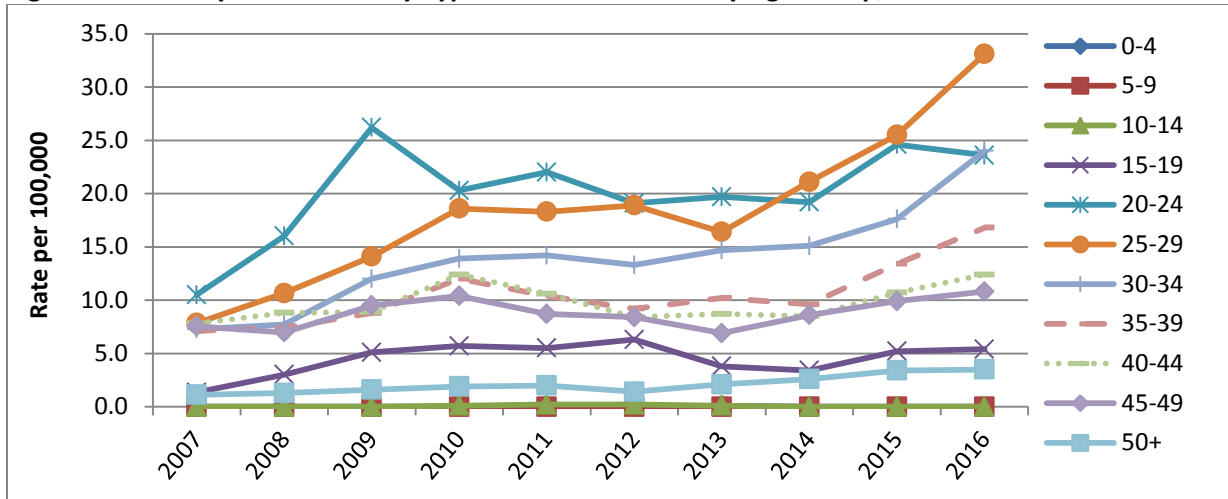
Figure 14. Primary and Secondary Syphilis Rates in Illinois by Race/Ethnicity, 2007-2016



By Age

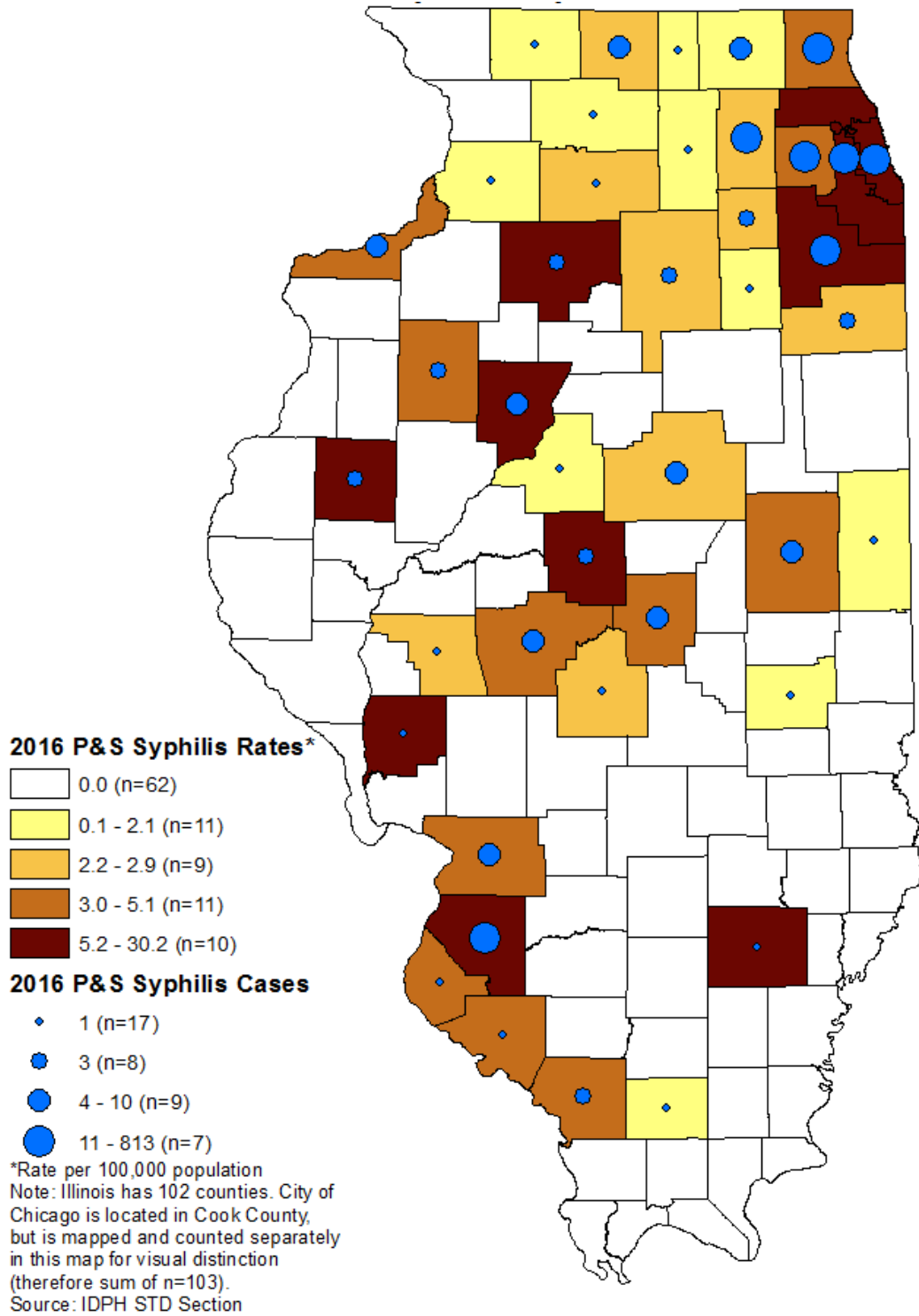
No age group is more affected by primary and secondary syphilis cases than any other. The age groups with the highest rates have been the 20-24 year olds, the 25-29 year olds, and the 30-34 year olds. The rates in these age groups in 2016 were 23.6 per 100,000, 33.1 per 100,000, and 24.0 per 100,000 respectively. Please see the tables at the end of this report for a description of the cases and rates in each age group.

Figure 15. Primary and Secondary Syphilis Rates in Illinois by Age Group, 2007-2016



County Map by Primary and Secondary Syphilis Cases and Rates

The below map shows the 2016 primary and secondary syphilis cases and rates of each county in Illinois and the city of Chicago grouped by quartile. Please see the tables at the end of this report for each jurisdiction's data.

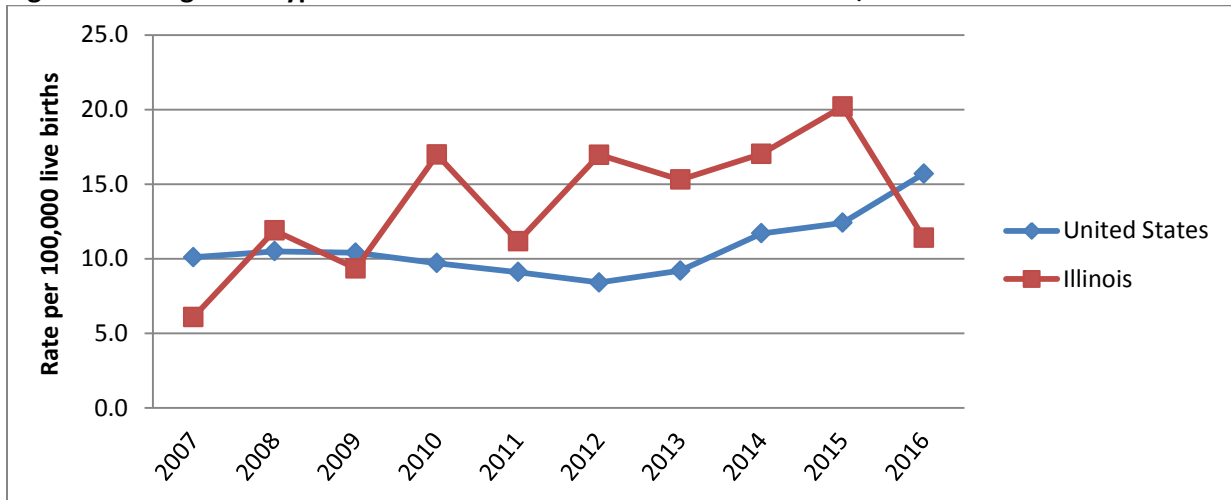


Congenital Syphilis

United States versus Illinois

In 2016 the congenital syphilis rate in the United States was 15.7 per 100,000 live births with 628 cases reported nationally. In Illinois, the congenital syphilis rate was 11.4 per 100,000 live births with 18 cases reported.

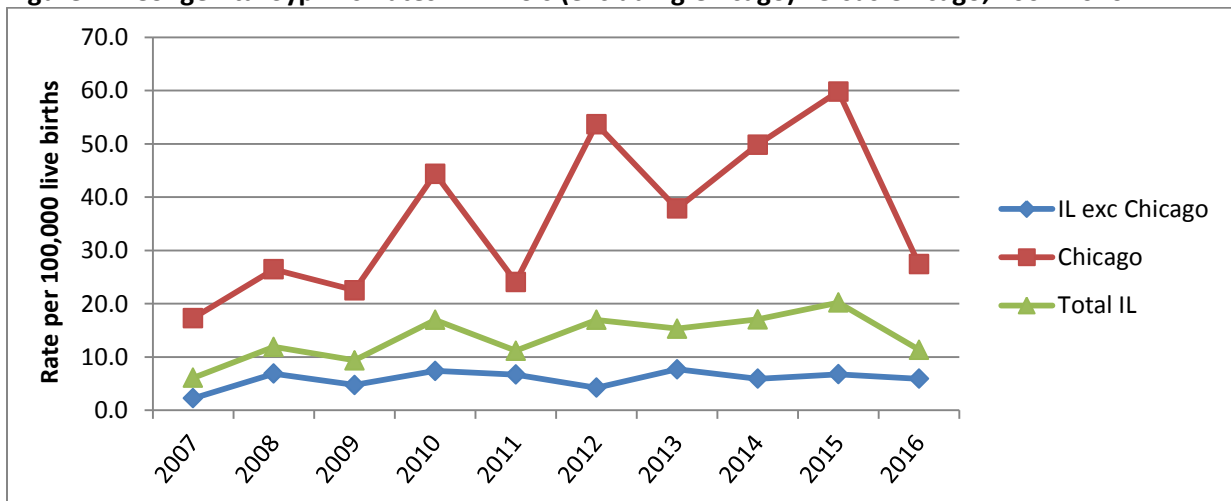
Figure 16. Congenital Syphilis Rates in the United States versus Illinois, 2007-2016



Illinois excluding Chicago versus Chicago

The rate of congenital syphilis cases in the city of Chicago continues to be above the state rate with a 2016 rate of 27.4 per 100,000 live births in Chicago compared to the 2016 state rate of 11.4 per 100,000 live births. In 2016, Illinois (excluding Chicago) reported 38.9% (7) of the congenital syphilis cases in Illinois while the city of Chicago reported 61.1% (11) of the cases.

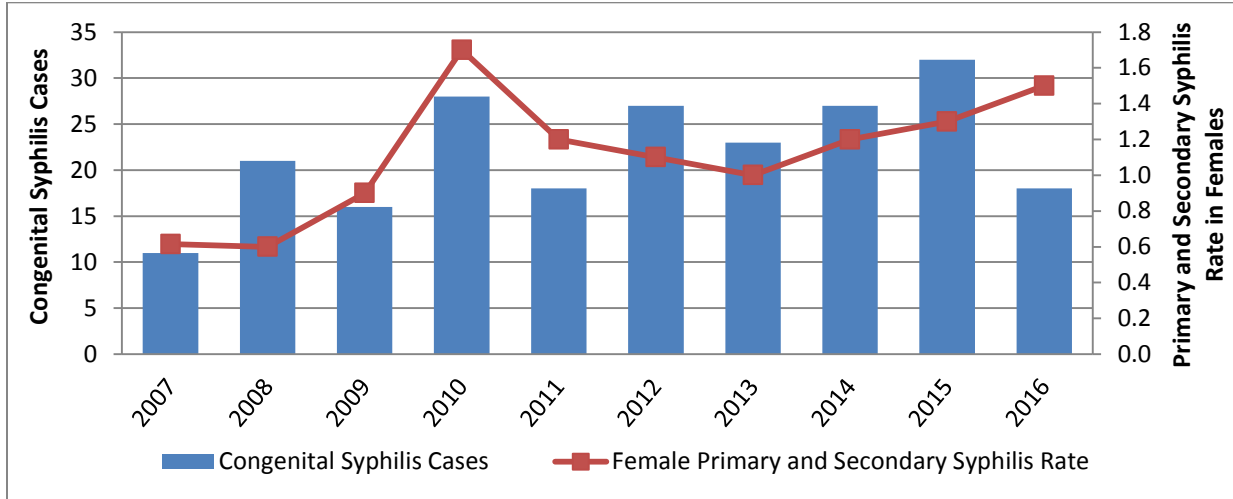
Figure 17. Congenital Syphilis Rates in Illinois (excluding Chicago) versus Chicago, 2007-2016



Female P&S Rates vs CS Cases

The number of congenital syphilis cases typically follows the trends of primary and secondary syphilis rates among females. This is true in Illinois as shown in the figure below.

Figure 18. Congenital Syphilis Cases and Primary and Secondary Syphilis Rates among Females in Illinois, 2007-2016



Data Tables

Table 1. Illinois Reported STD Cases by Sex, 2007-2016

Chlamydia	2007	2008	2009	2010	2011	2012	2013	2014	2015	2016
Female	41,733	43,112	44,560	44,598	46,728	48,575	45,764	46,564	47,268	48,128
Male	13,736	16,057	15,964	15,957	18,083	18,977	17,943	19,917	21,966	24,008
Unknown	1	0	18	117	128	149	90	112	376	65
Total	55,470	59,169	60,542	60,672	64,939	67,701	63,797	66,593	69,610	72,201

Gonorrhea	2007	2008	2009	2010	2011	2012	2013	2014	2015	2016
Female	11,312	11,342	11,248	8,924	9,500	9,837	8,574	7,559	7,698	8,920
Male	9,501	9,332	8,710	6,824	7,513	8,283	7,872	8,387	9,335	12,255
Unknown	0	0	4	29	24	29	18	25	97	24
Total	20,813	20,674	19,962	15,777	17,037	18,149	16,464	15,971	17,130	21,199

P&S Syphilis	2007	2008	2009	2010	2011	2012	2013	2014	2015	2016
Female	39	38	55	108	81	74	66	81	84	95
Male	425	516	695	800	800	729	731	782	1,001	1,165
Unknown	0	0	0	0	0	0	1	0	0	0
Total	464	554	750	908	881	803	798	863	1,085	1,260

Early Syphilis	2007	2008	2009	2010	2011	2012	2013	2014	2015	2016
Female	79	88	107	198	188	197	190	223	213	213
Male	609	737	987	1,212	1,274	1,303	1,416	1,459	1,761	2,185
Unknown	0	0	0	0	0	0	1	0	0	0
Total	688	825	1,094	1,410	1,462	1,500	1,607	1,682	1,974	2,398

P&S Syphilis is defined as Primary and Secondary stages.

Early Syphilis is defined as Primary, Secondary, and Early Latent stages.

Table 2. Illinois Reported STD Rates per 100,000 Population by Sex, 2007-2016

Chlamydia	2007	2008	2009	2010	2011	2012	2013	2014	2015	2016
Female	658.4	680.1	703.0	682.1	714.7	742.9	699.9	712.2	722.9	736.1
Male	225.9	264.1	262.6	253.6	287.4	301.6	285.2	316.5	349.1	381.5
Unknown	N/A	N/A	N/A	N/A	N/A	N/A	N/A	N/A	N/A	N/A
Total	446.6	476.4	487.5	472.9	506.1	527.7	497.2	519.0	542.5	562.7

Gonorrhea	2007	2008	2009	2010	2011	2012	2013	2014	2015	2016
Female	178.5	178.9	177.4	136.5	145.3	150.5	131.1	115.6	117.7	136.4
Male	156.3	153.5	143.2	108.5	119.4	131.6	125.1	133.3	148.4	194.8
Unknown	N/A	N/A	N/A	N/A	N/A	N/A	N/A	N/A	N/A	N/A
Total	167.6	166.5	160.7	123.0	132.8	141.5	128.3	124.5	133.5	165.2

P&S Syphilis	2007	2008	2009	2010	2011	2012	2013	2014	2015	2016
Female	0.6	0.6	0.9	1.7	1.2	1.1	1.0	1.2	1.3	1.5
Male	7.0	8.5	11.4	12.7	12.7	11.6	11.6	12.4	15.9	18.5
Unknown	N/A	N/A	N/A	N/A	N/A	N/A	N/A	N/A	N/A	N/A
Total	3.7	4.5	6.0	7.1	6.9	6.3	6.2	6.7	8.5	9.8

Early Syphilis	2007	2008	2009	2010	2011	2012	2013	2014	2015	2016
Female	1.2	1.4	1.7	3.0	2.9	3.0	2.9	3.4	3.3	3.3
Male	10.0	12.1	16.2	19.3	20.2	20.7	22.5	23.2	28.0	34.7
Unknown	N/A	N/A	N/A	N/A	N/A	N/A	N/A	N/A	N/A	N/A
Total	5.5	6.6	8.8	11.0	11.4	11.7	12.5	13.1	15.4	18.7

P&S Syphilis is defined as Primary and Secondary stages.

Early Syphilis is defined as Primary, Secondary, and Early Latent stages.

Table 3. Illinois Reported STD Cases by Race/Ethnicity, 2007-2016

Chlamydia	2007	2008	2009	2010	2011	2012	2013	2014	2015	2016
White - NH	11,067	11,206	11,750	12,068	13,692	15,427	14,480	14,741	15,899	16,808
Black - NH	30,634	33,540	33,053	29,697	32,989	32,330	28,691	27,885	29,550	28,873
Hispanic	6,132	6,369	6,080	6,462	7,359	6,713	7,053	7,965	8,733	9,629
Asian/PI - NH	392	387	337	374	475	519	519	579	717	740
AI/AN - NH	38	35	55	47	41	47	45	60	73	80
Other - NH	365	533	501	625	1,138	925	914	1,101	1,128	1,345
Unknown	6,842	7,099	8,766	11,399	9,245	11,740	12,095	14,262	13,510	14,726
Total	55,470	59,169	60,542	60,672	64,939	67,701	63,797	66,593	69,610	72,201

Gonorrhea	2007	2008	2009	2010	2011	2012	2013	2014	2015	2016
White - NH	2,568	2,222	2,142	2,031	2,137	2,360	2,248	2,396	2,875	3,972
Black - NH	15,597	15,719	14,726	10,124	11,874	12,275	10,674	9,100	10,134	11,065
Hispanic	639	699	743	671	783	772	804	929	1,170	1,678
Asian/PI - NH	52	57	59	54	75	85	61	72	127	160
AI/AN - NH	14	7	15	10	11	15	15	7	18	23
Other - NH	90	155	131	139	217	185	193	203	249	309
Unknown	1,853	1,815	2,156	2,748	1,940	2,457	2,469	3,264	2,557	3,992
Total	20,813	20,674	19,962	15,777	17,037	18,149	16,464	15,971	17,130	21,199

P&S Syphilis	2007	2008	2009	2010	2011	2012	2013	2014	2015	2016
White - NH	165	176	200	218	237	238	240	287	363	425
Black - NH	196	267	423	531	481	404	390	400	481	482
Hispanic	71	76	96	114	115	123	130	128	203	259
Asian/PI - NH	7	6	3	10	9	16	22	16	19	42
AI/AN - NH	1	0	0	4	1	1	1	4	0	3
Other - NH	5	8	6	17	15	6	4	7	8	26
Unknown	19	21	22	14	23	15	11	21	11	23
Total	464	554	750	908	881	803	798	863	1,085	1,260

P&S Syphilis is defined as Primary and Secondary stages.

NH: Non-Hispanic, PI: Pacific Islander, AI/AN: American Indian/Alaskan Native, Other: Other or multiple races

Early Syphilis	2007	2008	2009	2010	2011	2012	2013	2014	2015	2016
White - NH	230	258	283	320	387	406	448	503	625	770
Black - NH	298	392	607	834	796	788	801	831	900	979
Hispanic	114	127	155	185	200	228	297	272	375	506
Asian/PI - NH	11	11	6	14	15	28	31	29	35	58
AI/AN - NH	1	0	0	5	2	4	2	5	0	5
Other - NH	8	8	12	19	20	8	10	13	16	41
Unknown	26	29	31	33	42	38	18	29	23	39
Total	688	825	1,094	1,410	1,462	1,500	1,607	1,682	1,974	2,398

Early Syphilis is defined as Primary, Secondary, and Early Latent stages.

NH: Non-Hispanic, PI: Pacific Islander, AI/AN: American Indian/Alaskan Native, Other: Other or multiple races

Table 4. Illinois Reported STD Rates per 100,000 Population by Race/Ethnicity, 2007-2016

Chlamydia	2007	2008	2009	2010	2011	2012	2013	2014	2015	2016
White - NH	131.4	133.0	139.5	147.8	167.6	188.9	177.3	180.5	194.7	205.8
Black - NH	1,650.4	1,807.0	1,780.7	1,620.2	1,799.8	1,763.8	1,565.3	1,521.3	1,612.2	1,575.2
Hispanic	400.7	416.2	397.3	318.7	362.9	331.1	347.9	392.8	430.7	474.9
Asian/PI - NH	92.7	91.5	79.7	64.7	81.4	88.9	88.9	99.2	122.9	126.8
AI/AN - NH	208.4	192.0	301.7	249.4	217.5	249.4	238.7	318.3	387.3	424.4
Other - NH	217.9	318.3	299.1	312.6	569.1	462.6	457.1	550.6	564.1	672.6
Unknown	N/A	N/A	N/A	N/A	N/A	N/A	N/A	N/A	N/A	N/A
Total	446.6	476.4	487.5	472.9	506.1	527.7	497.2	519.0	542.5	562.7
Gonorrhea	2007	2008	2009	2010	2011	2012	2013	2014	2015	2016
White - NH	30.5	26.4	25.4	24.9	26.2	28.9	27.5	29.3	35.2	48.6
Black - NH	840.3	846.9	793.4	552.3	647.8	669.7	582.3	496.5	552.9	603.7
Hispanic	41.8	45.7	48.6	33.1	38.6	38.1	39.7	45.8	57.7	82.8
Asian/PI - NH	12.3	13.5	11.6	9.3	12.9	14.6	10.5	12.3	21.8	27.4
AI/AN - NH	76.8	38.4	82.3	23.1	58.4	79.6	79.6	37.1	95.5	122.0
Other - NH	53.7	92.6	78.2	69.5	108.5	92.5	96.5	101.5	124.5	154.5
Unknown	N/A	N/A	N/A	N/A	N/A	N/A	N/A	N/A	N/A	N/A
Total	167.6	166.5	160.7	123.0	132.8	141.5	128.3	124.5	133.5	165.2
P&S Syphilis	2007	2008	2009	2010	2011	2012	2013	2014	2015	2016
White - NH	2.0	2.1	2.4	2.7	2.9	2.9	2.9	3.5	4.4	5.2
Black - NH	10.6	14.4	22.8	29.0	26.2	22.0	21.3	21.8	26.2	26.3
Hispanic	4.6	5.0	6.3	5.6	5.7	6.1	6.4	6.3	10.0	12.8
Asian/PI - NH	1.7	1.4	0.7	1.7	1.5	2.7	3.8	2.7	3.3	7.2
AI/AN - NH	5.5	0.0	0.0	21.2	5.3	5.3	5.3	21.2	0.0	15.9
Other - NH	3.0	4.8	3.6	8.5	7.5	3.0	2.0	3.5	4.0	13.0
Unknown	N/A	N/A	N/A	N/A	N/A	N/A	N/A	N/A	N/A	N/A
Total	3.7	4.5	6.0	7.1	6.9	6.3	6.2	6.7	8.5	9.8

P&S Syphilis is defined as Primary and Secondary stages.

NH: Non-Hispanic, PI: Pacific Islander, AI/AN: American Indian/Alaskan Native, Other: Other or multiple races

Early Syphilis	2007	2008	2009	2010	2011	2012	2013	2014	2015	2016
White - NH	2.7	3.1	3.4	3.9	4.7	5.0	5.5	6.2	7.7	9.4
Black - NH	16.1	21.1	32.7	45.5	43.4	43.0	43.7	45.3	49.1	53.4
Hispanic	7.4	8.3	10.1	9.1	9.9	11.2	14.6	13.4	18.5	25.0
Asian/PI - NH	2.6	2.6	1.4	2.4	2.6	4.8	5.3	5.0	6.0	9.9
AI/AN - NH	5.5	0.0	0.0	26.5	10.6	21.2	10.6	26.5	0.0	26.5
Other - NH	4.8	4.8	7.2	9.5	10.0	4.0	5.0	6.5	8.0	20.5
Unknown	N/A	N/A	N/A	N/A	N/A	N/A	N/A	N/A	N/A	N/A
Total	5.5	6.6	8.8	11.0	11.4	11.7	12.5	13.1	15.4	18.7

Early Syphilis is defined as Primary, Secondary, and Early Latent stages.

NH: Non-Hispanic, PI: Pacific Islander, AI/AN: American Indian/Alaskan Native, Other: Other or multiple races

Table 5. Illinois Reported STD Cases by Age, 2007-2016

Chlamydia	2007	2008	2009	2010	2011	2012	2013	2014	2015	2016
0-4	45	50	45	71	41	50	37	22	16	17
5-9	11	8	14	34	10	9	10	13	4	10
10-14	540	611	567	762	796	785	675	643	537	558
15-19	19,085	20,998	21,033	21,828	22,997	23,274	20,434	19,550	19,260	19,513
20-24	19,993	21,053	22,047	21,968	24,044	25,627	24,839	26,257	27,210	27,406
25-29	8,980	9,219	9,270	8,729	9,512	9,853	9,661	10,923	12,358	13,223
30-34	3,554	3,725	3,955	3,832	4,041	4,265	4,132	4,689	5,159	5,579
35-39	1,749	1,785	1,830	1,740	1,698	1,864	1,931	2,136	2,449	2,799
40-44	779	882	845	834	883	979	1,058	1,144	1,220	1,401
45-49	393	428	505	455	491	502	549	544	682	783
50+	326	383	409	413	424	491	469	670	714	912
Unknown	15	27	22	6	2	2	2	2	1	0
Total	55,470	59,169	60,542	60,672	64,939	67,701	63,797	66,593	69,610	72,201

Gonorrhea	2007	2008	2009	2010	2011	2012	2013	2014	2015	2016
0-4	8	14	13	11	16	11	10	5	4	14
5-9	18	5	6	3	10	8	4	6	1	3
10-14	195	184	193	177	216	233	199	154	150	156
15-19	6,364	6,320	5,984	5,210	5,625	5,549	4,753	4,069	4,013	4,505
20-24	6,642	6,940	6,941	5,360	5,843	6,297	5,815	5,692	5,897	6,847
25-29	3,578	3,423	3,270	2,387	2,562	2,887	2,677	2,806	3,380	4,436
30-34	1,686	1,636	1,546	1,140	1,238	1,413	1,318	1,418	1,666	2,174
35-39	967	903	853	608	601	667	652	719	830	1,242
40-44	614	538	481	382	430	466	445	459	487	672
45-49	355	340	328	259	245	308	291	278	304	500
50+	383	365	341	239	251	308	300	364	398	650
Unknown	3	6	6	1	0	2	0	1	0	0
Total	20,813	20,674	19,962	15,777	17,037	18,149	16,464	15,971	17,130	21,199

P&S Syphilis	2007	2008	2009	2010	2011	2012	2013	2014	2015	2016
0-4	0	0	0	0	0	0	1	0	0	0
5-9	0	0	0	0	0	0	0	0	0	0
10-14	0	0	0	1	2	2	1	0	0	0
15-19	12	27	46	53	51	58	35	31	48	50
20-24	61	93	152	178	193	168	173	169	216	207
25-29	70	95	126	169	167	172	149	192	232	301
30-34	67	71	110	120	123	115	127	131	152	208
35-39	71	74	88	103	89	79	87	82	115	144
40-44	77	87	88	108	92	73	76	74	93	108
45-49	66	61	83	98	82	79	65	81	93	102
50+	40	46	57	78	82	57	84	103	136	140
Unknown	0	0	0	0	0	0	0	0	0	0
Total	464	554	750	908	881	803	798	863	1,085	1,260

Early Syphilis	2007	2008	2009	2010	2011	2012	2013	2014	2015	2016
0-4	0	0	0	0	0	0	1	0	0	0
5-9	0	0	0	0	0	0	0	0	0	0
10-14	0	0	0	1	2	3	1	0	0	0
15-19	28	41	80	82	96	96	76	64	85	81
20-24	89	124	207	278	315	327	334	327	374	354
25-29	100	137	187	267	277	319	289	348	426	555
30-34	96	112	143	187	189	209	237	257	292	389
35-39	106	108	124	157	144	146	179	180	227	291
40-44	125	136	139	159	165	136	174	163	163	212
45-49	86	99	122	155	141	138	156	152	167	220
50+	58	68	92	124	133	126	160	191	240	295
Unknown	0	0	0	0	0	0	0	0	0	1
Total	688	825	1,094	1,410	1,462	1,500	1,607	1,682	1,974	2,398

P&S Syphilis is defined as Primary and Secondary stages.

Early Syphilis is defined as Primary, Secondary, and Early Latent stages.

Table 6. Illinois Reported STD Rates per 100,000 Population by Age, 2007-2016

Chlamydia	2007	2008	2009	2010	2011	2012	2013	2014	2015	2016
0-4	5.1	5.7	5.1	8.5	4.9	6.0	4.4	2.6	1.9	2.0
5-9	1.2	0.9	1.5	4.0	1.2	1.0	1.2	1.5	0.5	1.2
10-14	59.7	67.5	62.6	86.6	90.5	89.3	76.8	73.1	61.1	63.4
15-19	2,134.8	2,348.8	2,352.7	2,367.2	2,494.0	2,524.0	2,216.0	2,120.2	2,088.7	2,116.2
20-24	3,442.1	3,624.6	3,795.7	2,499.3	2735.5	2,915.6	2,825.9	2,987.3	3,095.7	3,118.0
25-29	1,007.0	1,033.8	1,039.5	958.9	1,045.0	1,082.4	1,061.3	1,200.0	1,357.6	1,452.6
30-34	386.3	404.9	429.9	442.7	466.8	492.7	477.3	541.7	595.9	644.5
35-39	175.4	179.1	183.6	203.3	198.4	217.8	225.6	249.6	286.2	327.1
40-44	78.9	89.4	85.6	95.9	101.5	112.5	121.6	131.5	140.2	161.0
45-49	45.0	49.0	57.8	48.4	52.2	53.4	58.4	57.9	72.5	83.3
50+	9.1	10.7	11.5	10.3	10.6	12.2	11.7	16.7	17.8	22.7
Unknown	N/A	N/A	N/A	N/A	N/A	N/A	N/A	N/A	N/A	N/A
Total	446.6	476.4	487.5	472.9	506.1	527.7	497.2	519.0	542.5	562.7

Gonorrhea	2007	2008	2009	2010	2011	2012	2013	2014	2015	2016
0-4	0.9	1.6	1.5	1.3	1.9	1.3	1.2	0.6	0.5	1.7
5-9	1.9	0.5	0.6	0.3	1.2	0.9	0.5	0.7	0.1	0.3
10-14	21.5	20.3	21.3	20.1	24.6	26.5	22.6	17.5	17.1	17.7
15-19	711.9	706.9	669.3	565.0	610.0	601.8	515.5	441.3	435.2	488.6
20-24	1,,143.5	1,194.8	1,195.0	609.8	664.9	716.4	661.6	647.6	670.9	779.0
25-29	401.2	383.8	366.7	262.2	281.5	317.2	294.1	308.3	371.3	487.3
30-34	183.3	177.8	168.1	131.7	143.0	163.2	152.2	163.8	192.4	251.1
35-39	97.0	90.6	85.6	71.0	70.2	77.9	76.2	84.0	97.0	145.1
40-44	62.2	54.5	48.7	43.9	49.4	53.6	51.1	52.8	56.0	77.2
45-49	40.6	38.9	37.5	27.6	26.1	32.8	31.0	29.6	32.3	53.2
50+	10.7	10.2	9.6	6.0	6.3	7.7	7.5	9.1	9.9	16.2
Unknown	N/A	N/A	N/A	N/A	N/A	N/A	N/A	N/A	N/A	N/A
Total	167.6	166.5	160.7	123.0	132.8	141.5	128.3	124.5	133.5	165.2

P&S Syphilis	2007	2008	2009	2010	2011	2012	2013	2014	2015	2016
0-4	0.0	0.0	0.0	0.0	0.0	0.0	0.1	0.0	0.0	0.0
5-9	0.0	0.0	0.0	0.0	0.0	0.0	0.0	0.0	0.0	0.0
10-14	0.0	0.0	0.0	0.1	0.2	0.2	0.1	0.0	0.0	0.0
15-19	1.3	3.0	5.1	5.7	5.5	6.3	3.8	3.4	5.2	5.4
20-24	10.5	16.0	26.2	20.3	22.0	19.1	19.7	19.2	24.6	23.6
25-29	7.8	10.7	14.1	18.6	18.3	18.9	16.4	21.1	25.5	33.1
30-34	7.3	7.7	12.0	13.9	14.2	13.3	14.7	15.1	17.6	24.0
35-39	7.1	7.4	8.8	12.0	10.4	9.2	10.2	9.6	13.4	16.8
40-44	7.8	8.8	8.9	12.4	10.6	8.4	8.7	8.5	10.7	12.4
45-49	7.6	7.0	9.5	10.4	8.7	8.4	6.9	8.6	9.9	10.8
50+	1.1	1.3	1.6	1.9	2.0	1.4	2.1	2.6	3.4	3.5
Unknown	N/A	N/A	N/A	N/A	N/A	N/A	N/A	N/A	N/A	N/A
Total	3.7	4.5	6.0	7.1	6.9	6.3	6.2	6.7	8.5	9.8

Early Syphilis	2007	2008	2009	2010	2011	2012	2013	2014	2015	2016
0-4	0.0	0.0	0.0	0.0	0.0	0.0	0.1	0.0	0.0	0.0
5-9	0.0	0.0	0.0	0.0	0.0	0.0	0.0	0.0	0.0	0.0
10-14	0.0	0.0	0.0	0.1	0.2	0.3	0.1	0.0	0.0	0.0
15-19	3.1	4.6	8.9	8.9	10.4	10.4	8.2	6.9	9.2	8.8
20-24	15.3	21.3	35.6	31.6	35.8	37.2	38.0	37.2	42.6	40.3
25-29	11.2	15.4	21.0	29.3	30.4	35.0	31.7	38.2	46.8	61.0
30-34	10.4	12.2	15.5	21.6	21.8	24.1	27.4	29.7	33.7	44.9
35-39	10.6	10.8	12.4	18.3	16.8	17.1	20.9	21.0	26.5	34.0
40-44	12.7	13.8	14.1	18.3	19.0	15.6	20.0	18.7	18.7	24.4
45-49	9.8	11.3	14.0	16.5	15.0	14.7	16.6	16.2	17.8	23.4
50+	1.6	1.9	2.6	3.1	3.3	3.1	4.0	4.8	6.0	7.4
Unknown	N/A	N/A	N/A	N/A	N/A	N/A	N/A	N/A	N/A	N/A
Total	5.5	6.6	8.8	11.0	11.4	11.7	12.5	13.1	15.4	18.7

P&S Syphilis is defined as Primary and Secondary stages.

Early Syphilis is defined as Primary, Secondary, and Early Latent stages.

Table 7. Illinois Reported Chlamydia Cases by County, 2007-2016

County	2007	2008	2009	2010	2011	2012	2013	2014	2015	2016
Adams	151	176	214	178	223	276	253	205	234	246
Alexander	84	119	87	73	88	67	73	65	49	51
Bond	31	29	41	42	53	56	51	39	28	31
Boone	116	96	116	87	114	177	157	119	141	157
Brown	7	7	18	5	12	21	23	17	14	13
Bureau	39	41	32	65	61	75	60	51	70	77
Calhoun	3	0	3	2	6	8	9	8	6	5
Carroll	24	15	26	26	29	21	26	42	37	24
Cass	33	40	26	44	34	46	42	32	47	43
Champaign	1,271	1,259	1,252	1,263	1,362	1,490	1,406	1,247	1,223	1,423
Christian	65	67	67	82	79	85	75	61	103	91
Clark	19	18	24	23	52	54	40	36	27	26
Clay	10	23	20	14	22	39	36	46	31	33
Clinton	36	47	48	66	95	75	78	95	90	82
Coles	170	172	261	264	308	335	365	319	374	342
Cook County Total	30,881	34,257	35,531	34,664	36,845	37,946	34,589	37,371	39,539	41,056
<i>Chicago</i>	22,181	25,465	26,792	25,087	27,805	28,006	24,957	27,320	29,018	29,776
<i>Suburban Cook County</i>	8,700	8,792	8,739	9,577	9,040	9,940	9,632	10,051	10,521	11,280
Crawford	21	29	26	26	64	60	32	50	36	23
Cumberland	10	11	12	15	20	22	28	25	23	32
DeKalb	421	414	406	456	515	510	499	472	540	600
DeWitt	36	27	27	28	33	26	32	38	52	38
Douglas	30	24	31	31	45	41	52	39	34	37
DuPage	1,522	1,587	1,555	1,542	1,599	1,861	1,883	2,056	2,382	2,417
Edgar	12	10	24	35	47	45	41	39	29	52
Edwards	1	4	3	8	9	14	10	10	11	13
Effingham	32	58	71	52	93	78	65	76	70	67
Fayette	26	31	38	43	51	60	37	32	50	28
Ford	28	27	31	26	32	36	25	38	34	26
Franklin	72	83	116	146	125	120	115	104	94	119
Fulton	49	52	63	71	76	92	89	87	78	65
Gallatin	11	11	5	11	9	12	9	13	10	14
Greene	26	21	28	22	37	24	38	32	22	13
Grundy	34	55	61	49	56	68	79	78	81	90
Hamilton	5	12	3	11	5	15	12	21	11	17
Hancock	29	20	13	28	45	31	42	38	32	39
Hardin	5	2	9	7	8	3	13	10	9	11
Henderson	7	16	14	15	15	13	12	11	8	23
Henry	86	119	115	100	109	147	152	130	108	131
Iroquois	32	28	25	27	39	35	54	59	68	98
Jackson	498	511	536	698	737	738	693	625	675	659
Jasper	8	14	11	14	13	14	15	21	24	20
Jefferson	102	101	140	127	151	147	172	135	128	153
Jersey	33	35	39	23	49	47	39	44	44	40
Jo Daviess	16	21	33	21	23	22	43	39	28	25
Johnson	33	23	31	23	49	35	34	36	37	35
Kane	1,508	1,485	1,419	1,418	1,499	1,580	1,558	1,708	1,848	1,947
Kankakee	539	547	482	546	605	674	624	656	587	570

County	2007	2008	2009	2010	2011	2012	2013	2014	2015	2016
Kendall	130	163	161	158	184	223	223	262	294	364
Knox	230	203	223	205	186	210	186	229	215	231
La Salle	289	240	246	254	257	293	280	286	285	337
Lake	2,118	2,529	2,150	1,986	2,286	2,611	2,644	2,836	2,945	3,042
Lawrence	23	19	15	30	39	33	41	36	42	31
Lee	67	74	102	87	120	139	102	118	107	88
Livingston	145	151	118	132	124	165	101	72	66	96
Logan	94	118	120	104	111	128	143	173	152	131
Macon	704	708	686	764	793	839	900	831	764	787
Macoupin	98	69	64	91	113	127	131	112	115	127
Madison	845	847	965	987	1097	1,120	1,100	1,072	1,050	1,091
Marion	121	120	141	142	181	166	206	191	181	143
Marshall	24	20	29	22	25	21	29	39	17	22
Mason	21	30	38	34	53	53	45	31	38	39
Massac	40	48	52	35	33	52	30	55	49	44
McDonough	125	99	96	97	140	177	160	227	257	239
McHenry	358	317	338	394	452	484	590	555	631	710
McLean	616	665	626	786	696	899	931	895	933	885
Menard	20	21	19	31	33	37	37	24	25	31
Mercer	23	24	24	35	24	37	46	45	48	24
Monroe	27	44	39	29	40	74	58	55	61	66
Montgomery	63	60	89	67	82	78	82	61	75	58
Morgan	144	151	118	98	143	141	140	149	164	136
Moultrie	17	17	27	23	29	28	28	46	28	33
Ogle	87	108	130	147	117	152	136	133	139	128
Peoria	1,610	1,417	1,456	1,704	1,645	1,542	1,409	1,482	1,585	1,587
Perry	33	42	46	68	85	66	52	64	64	49
Piatt	19	24	19	26	34	36	35	42	48	38
Pike	30	19	22	27	33	61	30	40	45	32
Pope	44	45	51	32	50	32	29	33	62	38
Pulaski	31	45	35	42	31	36	25	32	29	23
Putnam	9	2	3	6	15	14	7	14	13	7
Randolph	62	90	83	83	92	104	85	55	74	61
Richland	16	10	11	19	23	51	52	46	50	41
Rock Island	755	744	785	719	702	712	648	712	659	694
Saline	66	66	53	80	78	92	110	108	84	98
Sangamon	1,078	1,129	1,223	1,199	1,220	1,369	1,283	1,102	1,196	1,301
Schuyler	6	8	18	14	14	13	7	6	7	5
Scott	15	6	4	7	5	8	9	12	13	14
Shelby	16	22	29	29	40	44	62	31	40	39
St. Clair	2,316	2,284	2,255	2,313	2,317	2,121	2,029	1,994	1,947	2,067
Stark	16	7	9	13	12	14	21	14	11	7
Stephenson	226	193	238	202	184	209	246	264	201	205
Tazewell	284	216	273	379	393	453	389	389	377	358
Union	21	23	35	42	55	27	48	56	49	23
Vermilion	491	496	413	439	630	552	511	450	480	539
Wabash	14	18	19	20	21	25	30	28	38	26
Warren	33	39	31	46	62	45	55	40	48	41
Washington	21	27	24	30	29	25	25	27	33	18

County	2007	2008	2009	2010	2011	2012	2013	2014	2015	2016
Wayne	15	22	10	23	22	36	24	33	30	22
White	14	17	25	29	18	31	29	31	29	20
Whiteside	148	165	192	196	157	183	205	170	193	173
Will	1,569	1,666	1,690	1,791	2,196	2,149	2,056	2,330	2,309	2,563
Williamson	139	149	167	215	229	223	208	216	216	197
Winnebago	1,726	1,540	1,533	1,580	1,577	1,728	1,846	1,701	1,777	1,870
Woodford	46	49	41	44	71	72	83	63	56	60
Total Illinois	55,470	59,169	60,542	60,672	64,939	67,701	63,797	66,593	69,610	72,201
Illinois Excluding Chicago	33,289	33,704	33,750	35,585	37,134	39,695	38,840	39,273	40,592	42,425

Table 8. Illinois Reported Chlamydia Rates per 100,000 Population by County, 2007-2016

County	2007	2008	2009	2010	2011	2012	2013	2014	2015	2016
Adams	221.2	257.8	313.4	265.3	332.3	411.3	377.0	305.5	348.7	366.6
Alexander	875.9	1,240.9	907.2	886.1	1,068.2	813.3	886.1	789.0	594.8	619.1
Bond	175.8	164.5	232.5	236.4	298.3	315.2	287.0	219.5	157.6	174.5
Boone	277.6	229.7	277.6	160.6	210.5	326.8	289.9	219.7	260.3	289.9
Brown	100.7	100.7	259.0	72.1	173.0	302.7	331.6	245.1	201.8	187.4
Bureau	109.8	115.5	90.1	185.8	174.4	214.4	171.5	145.8	200.1	220.1
Calhoun	59.0	0.0	59.0	39.3	117.9	157.2	176.9	157.2	117.9	98.3
Carroll	143.9	90.0	155.9	169.0	188.5	136.5	169.0	273.0	240.5	156.0
Cass	241.0	292.1	189.9	322.5	249.2	337.2	307.9	234.6	344.5	315.2
Champaign	707.4	700.7	696.8	628.1	677.3	741.0	699.2	620.1	608.2	707.7
Christian	183.8	189.4	189.4	235.6	227.0	244.3	215.5	175.3	296.0	261.5
Clark	111.7	105.8	141.1	140.8	318.3	330.6	244.9	220.4	165.3	159.2
Clay	68.7	158.0	137.4	101.3	159.2	282.3	260.6	333.0	224.4	238.9
Clinton	101.3	132.3	135.1	174.8	251.6	198.6	206.6	251.6	238.3	217.1
Coles	319.6	323.3	490.6	490.0	571.7	621.8	677.5	592.1	694.2	634.8
Cook County Total	574.3	637.1	660.8	667.3	709.3	730.5	665.9	719.4	761.1	790.3
<i>Chicago</i>	765.9	879.3	925.1	930.7	1,031.5	1,039.0	925.8	1,013.5	1,076.5	1,104.6
<i>Suburban Cook County</i>	350.7	354.4	352.3	383.2	361.7	397.7	385.4	402.2	421.0	451.4
Crawford	102.7	141.8	127.1	131.2	323.0	302.8	161.5	252.3	181.7	116.1
Cumberland	88.9	97.8	106.6	135.8	181.0	199.1	253.4	226.3	208.2	289.6
DeKalb	473.2	465.3	456.3	433.6	489.7	485.0	474.5	448.8	513.5	570.6
DeWitt	214.3	160.7	160.7	169.1	199.3	157.0	193.2	229.5	314.0	229.5
Douglas	150.6	120.5	155.6	155.2	225.2	205.2	260.3	195.2	170.2	185.2
DuPage	168.3	175.5	172.0	168.2	174.4	203.0	205.4	224.2	259.8	263.6
Edgar	60.9	50.8	121.8	188.4	253.0	242.2	220.7	209.9	156.1	279.9
Edwards	14.3	57.4	43.0	119.0	133.9	208.3	148.8	148.8	163.7	193.4
Effingham	93.4	169.3	207.2	151.9	271.6	227.8	189.8	221.9	204.4	195.7
Fayette	119.3	142.2	174.3	194.2	230.4	271.0	167.1	144.5	225.8	126.5
Ford	196.6	189.6	217.7	184.6	227.3	255.7	177.5	269.9	241.5	184.6
Franklin	184.5	212.7	297.3	369.1	316.0	303.3	290.7	262.9	237.6	300.8
Fulton	128.1	135.9	164.7	191.5	205.0	248.2	240.1	234.7	210.4	175.3
Gallatin	170.7	170.7	77.6	196.8	161.0	214.7	161.0	232.6	178.9	250.5
Greene	176.1	142.3	189.7	158.4	266.5	172.8	273.7	230.4	158.4	93.6
Grundy	90.6	146.5	162.5	97.9	111.9	135.8	157.8	155.8	161.8	179.8
Hamilton	58.0	139.2	34.8	130.1	59.1	177.4	141.9	248.3	130.1	201.0
Hancock	144.1	99.4	64.6	146.6	235.6	162.3	219.8	198.9	167.5	204.1
Hardin	104.2	41.7	187.5	162.0	185.2	69.4	300.9	231.5	208.3	254.6
Henderson	85.2	194.8	170.5	204.6	204.6	177.3	163.7	150.0	109.1	313.7
Henry	168.6	233.2	225.4	198.1	215.9	291.2	301.1	257.5	213.9	259.5
Iroquois	102.1	89.4	79.8	90.9	131.2	117.8	181.7	198.5	228.8	329.8
Jackson	835.4	857.2	899.1	1,159.1	1,223.9	1,225.5	1,150.8	1,037.9	1,120.9	1,094.4
Jasper	79.1	138.4	108.7	144.4	134.0	144.4	154.7	216.5	247.5	206.2
Jefferson	254.7	252.2	349.6	327.1	388.9	378.6	443.0	347.7	329.7	394.1
Jersey	152.3	161.5	180.0	100.1	213.2	204.5	169.7	191.4	191.4	174.0
Jo Daviess	71.8	94.2	148.1	92.6	101.4	97.0	189.6	172.0	123.5	110.2
Johnson	256.3	178.6	240.7	182.8	389.4	278.2	270.2	286.1	294.1	278.2
Kane	373.2	367.5	351.1	275.2	290.9	306.6	302.4	331.5	358.6	377.9
Kankakee	519.1	526.8	464.2	481.3	533.3	594.1	550.0	578.2	517.4	502.4

County	2007	2008	2009	2010	2011	2012	2013	2014	2015	2016
Kendall	238.3	298.8	295.2	137.7	160.4	194.4	194.4	228.4	256.2	317.3
Knox	411.9	363.6	399.4	387.4	351.5	396.8	351.5	432.7	406.3	436.5
La Salle	259.2	215.2	220.6	223.0	225.6	257.2	245.8	251.0	250.2	295.8
Lake	328.7	392.5	333.7	282.3	325.0	371.2	375.9	403.1	418.6	432.4
Lawrence	148.8	123.0	97.1	178.2	231.7	196.0	243.6	213.9	249.5	184.2
Lee	185.8	205.2	282.8	241.5	333.0	385.8	283.1	327.5	297.0	244.2
Livingston	365.4	380.6	297.4	338.9	318.4	423.6	259.3	184.9	169.4	246.5
Logan	301.4	378.4	384.8	343.2	366.3	422.4	471.9	570.9	501.6	432.3
Macon	613.7	617.2	598.1	689.7	715.9	757.4	812.5	750.2	689.7	710.5
Macoupin	199.9	140.8	130.6	190.5	236.6	265.9	274.3	234.5	240.8	265.9
Madison	326.3	327.1	372.7	366.5	407.4	415.9	408.5	398.1	389.9	405.2
Marion	290.2	287.8	338.2	360.1	459.0	420.9	522.4	484.3	459.0	362.6
Marshall	182.1	151.7	220.0	174.1	197.8	166.1	229.4	308.5	134.5	174.1
Mason	130.9	187.1	236.9	231.8	361.4	361.4	306.8	211.4	259.1	265.9
Massac	263.8	316.6	343.0	226.8	213.9	337.0	194.4	356.5	317.6	285.2
McDonough	301.4	378.4	384.8	343.2	366.3	542.7	490.6	696.1	788.1	732.9
McHenry	379.8	300.8	291.7	297.4	429.3	156.8	191.1	179.8	204.4	230.0
McLean	137.7	121.9	130.0	127.6	146.4	530.2	549.0	527.8	550.2	521.9
Menard	409.5	442.1	416.1	463.5	410.4	291.2	291.2	188.9	196.8	244.0
Mercer	135.6	141.5	141.5	213.0	146.0	225.1	279.9	273.8	292.1	146.0
Monroe	97.8	159.3	141.2	88.0	121.4	224.5	176.0	166.9	185.1	200.3
Montgomery	205.5	195.7	290.4	222.6	272.4	259.1	272.4	202.6	249.1	192.7
Morgan	393.3	412.4	322.3	275.7	402.3	396.7	393.8	419.2	461.4	382.6
Moultrie	119.0	119.0	189.0	154.9	195.3	188.6	188.6	309.8	188.6	222.3
Ogle	170.5	211.6	254.7	274.8	218.7	284.1	254.2	248.6	259.8	239.3
Peoria	877.7	772.5	793.8	913.7	882.1	826.8	755.5	794.7	849.9	851.0
Perry	142.9	181.9	199.2	304.3	380.3	295.3	232.7	286.4	286.4	219.2
Piatt	116.1	146.7	116.1	155.4	203.2	215.2	209.2	251.1	286.9	227.2
Pike	172.6	109.3	126.6	164.3	200.9	371.3	182.6	243.5	273.9	194.8
Pope	997.1	1,019.7	1,155.7	715.9	1,118.6	715.9	648.8	738.3	1,387.0	850.1
Pulaski	421.9	612.4	476.3	681.7	503.2	584.3	405.8	519.4	470.7	373.3
Putnam	147.9	32.9	49.3	99.9	249.8	233.1	116.6	233.1	216.5	116.6
Randolph	182.9	265.5	244.9	247.9	274.8	310.7	253.9	164.3	221.1	182.2
Richland	99.1	61.9	68.1	117.0	141.7	314.2	320.3	283.4	308.0	252.6
Rock Island	505.4	498.1	525.5	487.3	475.8	482.6	439.2	482.6	446.6	470.4
Saline	246.9	246.9	198.3	321.1	313.1	369.3	441.5	433.5	337.2	393.4
Sangamon	570.5	597.5	647.3	607.2	617.8	693.3	649.7	558.1	605.7	658.9
Schuyler	83.5	111.3	250.4	185.6	185.6	172.3	92.8	79.5	92.8	66.3
Scott	270.9	108.4	72.2	130.7	93.4	149.4	168.1	224.1	242.8	261.4
Shelby	69.9	96.1	126.7	129.7	178.9	196.8	277.2	138.6	178.9	174.4
St. Clair	904.4	891.9	880.6	856.5	858.0	785.4	751.3	738.4	721.0	765.4
Stark	252.7	110.5	142.1	216.9	200.2	233.6	350.4	233.6	183.5	116.8
Stephenson	461.4	394.0	485.9	423.4	385.7	438.1	515.6	553.3	421.3	429.7
Tazewell	221.0	168.1	212.5	279.9	290.3	334.6	287.3	287.3	278.4	264.4
Union	114.8	125.7	191.3	235.8	308.8	151.6	269.5	314.5	275.2	129.2
Vermilion	585.1	591.0	492.1	537.8	771.8	676.3	626.0	551.3	588.1	660.3
Wabash	108.2	139.1	146.9	167.4	175.8	209.3	251.1	234.4	318.1	217.6
Warren	176.1	208.2	165.5	259.8	350.1	254.1	310.6	225.9	271.1	231.5
Washington	138.6	178.2	158.4	203.9	197.1	169.9	169.9	183.5	224.2	122.3

County	2007	2008	2009	2010	2011	2012	2013	2014	2015	2016
Wayne	87.5	128.3	58.3	137.2	131.3	214.8	143.2	196.9	179.0	131.3
White	91.1	110.6	162.6	197.7	122.7	211.4	197.7	211.4	197.7	136.4
Whiteside	244.0	272.0	316.6	335.1	268.4	312.8	350.4	290.6	329.9	295.7
Will	312.4	331.7	336.5	264.3	324.1	317.2	303.4	343.9	340.8	378.3
Williamson	226.8	243.1	272.4	324.0	345.1	336.1	313.5	325.5	325.5	296.9
Winnebago	619.9	553.1	550.6	535.1	534.1	585.2	625.2	576.1	601.8	633.3
Woodford	129.7	138.1	115.6	113.8	183.6	186.2	214.7	162.9	144.8	155.2
Total Illinois	446.6	476.4	487.5	472.9	506.1	527.7	497.2	519.0	542.5	562.7
Illinois Excluding Chicago	349.6	353.9	354.4	351.1	366.4	391.7	383.2	387.5	400.5	418.6

Table 9. Illinois Reported Gonorrhea Cases by County, 2007-2016

County	2007	2008	2009	2010	2011	2012	2013	2014	2015	2016
Adams	82	49	72	19	45	55	24	33	25	48
Alexander	37	46	24	28	17	13	21	17	12	21
Bond	5	10	1	5	3	4	6	3	4	3
Boone	11	13	14	9	7	8	10	5	11	29
Brown	2	2	3	1	1	3	2	1	4	1
Bureau	2	2	5	4	3	4	6	8	4	4
Calhoun	0	1	2	0	0	0	0	1	0	0
Carroll	1	1	0	1	1	1	3	3	1	2
Cass	3	3	2	3	4	7	3	5	1	5
Champaign	436	317	324	304	396	411	395	380	315	364
Christian	16	3	9	13	9	9	9	10	25	14
Clark	4		0	2	2	3	1	3	1	5
Clay	0	2	2	1	3	3	1	1	2	4
Clinton	9	10	11	14	16	10	17	10	10	6
Coles	27	26	41	35	32	33	46	25	22	54
Cook County Total	12,338	13,227	13,330	10,123	10,884	12,042	10,551	10,387	11,082	13,608
<i>Chicago</i>	9,388	10,509	11,007	7,831	8,654	9,715	8,401	8,306	8,786	10,836
<i>Suburban Cook County</i>	2,950	2,718	2,323	2,292	2,230	2,327	2,150	2,081	2,296	2,772
Crawford	2	0	2	0	5	5	1	2	5	3
Cumberland	0	1	5	4	3	1	0	2	0	6
DeKalb	73	61	71	85	72	79	79	72	66	88
DeWitt	5	2	2	3	1	2	9	2	5	5
Douglas	1	3	5	1	4	3	4	2	4	6
DuPage	251	268	225	223	241	239	258	242	307	390
Edgar	3	1	0	4	0	5	3	0	0	10
Edwards	0	0	0	0	0	1	1	0	0	5
Effingham	0	3	2	7	8	4	5	5	6	13
Fayette	5	6	1	1	10	3	2	1	6	7
Ford	6	4	1	8	4	6	2	2	6	7
Franklin	7	10	11	15	14	8	9	26	14	24
Fulton	7	9	5	3	5	12	8	8	6	19
Gallatin	1	0	0	0	1	0	1	2	4	2
Greene	10	2	3	3	2	4	0	1	1	4
Grundy	5	4	2	2	4	5	6	11	7	12
Hamilton	1	1	4	2	1	0	0	1	1	2
Hancock	3	1	0	1	1	0	3	2	2	1
Hardin	1	0	0	0	3	1	0	0	1	1
Henderson	0	1	0	1	1	1	1	0	0	8
Henry	16	12	10	15	11	11	16	12	11	11
Iroquois	5	2	4	1	2	6	3	5	8	3
Jackson	135	117	113	113	130	140	92	96	135	112
Jasper	0	1	0	0	2	1	0	1	4	1
Jefferson	38	44	47	47	35	46	29	27	20	41
Jersey	1	3	4	2	4	3	3	5	7	4
Jo Daviess	3	2	2	1	2	3	3	7	4	3
Johnson	8	11	1	1	9	9	4	6	3	11
Kane	270	279	229	208	192	222	209	238	321	465
Kankakee	287	201	200	202	197	191	169	129	143	164

County	2007	2008	2009	2010	2011	2012	2013	2014	2015	2016
Kendall	14	24	23	31	17	24	23	34	51	82
Knox	72	70	93	31	26	47	55	48	52	60
LaSalle	59	32	30	13	20	33	62	65	30	49
Lake	469	548	440	301	362	367	456	405	410	484
Lawrence	3	3	0	2	5	7	3	1	10	4
Lee	12	6	15	12	11	18	11	9	4	10
Livingston	41	27	18	17	22	46	19	6	14	19
Logan	21	26	28	32	24	44	20	22	29	44
Macon	405	318	307	243	174	242	392	338	310	354
Macoupin	11	8	6	15	18	17	6	15	14	18
Madison	323	269	170	195	223	212	173	203	245	267
Marion	28	17	16	18	40	35	27	13	20	22
Marshall	0	5	2	0		1	6	5	1	3
Mason	5	1	5	5	6	4	2	0	4	2
Massac	13	20	8	9	8	8	5	7	20	10
McDonough	17	6	12	11	23	29	23	23	19	28
McHenry	46	25	35	29	33	39	32	40	55	90
McLean	218	212	104	192	192	285	188	143	131	215
Menard	9	8	10	15	4	7	3	6	3	7
Mercer	5	3	6	2	2	1	5	3	4	5
Monroe	4	4	5	0	9	10	9	5	11	3
Montgomery	7	5	8	5	3	4	8	4	15	9
Morgan	56	42	17	11	19	13	30	36	26	26
Moultrie	4	5	4	2	1	1	4	2	3	7
Ogle	11	16	14	3	4	9	12	14	17	13
Peoria	904	780	660	519	650	630	543	450	468	603
Perry	10	14	11	17	16	11	8	6	15	10
Piatt	2	3	8	5	3	2	3	2	1	4
Pike	4	2	4	2	1	0	2	3	2	0
Pope	0	12	7	3	5	3	2	4	2	2
Pulaski	13	19	10	8	7	10	7	6	13	18
Putnam	0		1	1	1	2	2	0	0	1
Randolph	31	22	13	15	12	23	8	8	7	8
Richland	0	1	1	1	0	5	6	6	7	16
Rock Island	270	211	306	270	268	176	113	79	128	108
Saline	7	14	9	10	15	10	13	8	16	12
Sangamon	650	618	702	535	500	485	467	358	376	519
Schuyler	0	1	0	0	5	0	1	1	2	0
Scott	5	2	1	0	0	1	6	4	1	0
Shelby	4	7	2	3	0	3	0	2	13	11
St. Clair	1,059	911	659	617	779	660	533	629	693	815
Stark	1	0	2	1	0	0	4	1	1	2
Stephenson	106	123	54	64	56	38	46	57	57	53
Tazewell	52	36	36	42	43	43	57	46	48	55
Union	5	2	6	4	6	0	5	5	7	8
Vermilion	300	218	158	83	174	132	171	173	129	193
Wabash	1	0	6	1	0	4	6	5	12	2
Warren	11	5	0	3	0	2	3	3	7	7
Washington	1	4	2	6	0	3	3	1	0	2

County	2007	2008	2009	2010	2011	2012	2013	2014	2015	2016
Wayne	1	3	3	10	2	4	5	0	2	5
White	1	1	0	0	5	3	1	2	1	1
Whiteside	36	36	27	24	19	15	27	20	13	19
Will	466	394	367	375	377	349	335	366	390	504
Williamson	30	31	35	40	32	28	29	22	37	69
Winnebago	865	737	698	401	420	382	462	444	563	711
Woodford	8	6	9	8	8	5	7	14	5	14
Total Illinois	20,813	20,674	19,962	15,777	17,037	18,149	16,464	15,971	17,130	21,199
Illinois Excluding Chicago	11,425	10,165	8,955	7,946	8,383	8,434	8,063	7,665	8,344	10,363

Table 10. Illinois Reported Gonorrhea Rates per 100,000 Population by County, 2007-2016

County	2007	2008	2009	2010	2011	2012	2013	2014	2015	2016
Adams	120.1	71.8	105.5	28.3	67.1	82.0	35.8	49.2	37.3	71.5
Alexander	385.8	479.7	250.3	339.9	206.4	157.8	254.9	206.4	145.7	254.9
Bond	28.4	56.7	5.7	28.1	16.9	22.5	33.8	16.9	22.5	16.9
Boone	26.3	31.1	33.5	16.6	12.9	14.8	18.5	9.2	20.3	53.5
Brown	28.8	28.8	43.2	14.4	14.4	43.2	28.8	14.4	57.7	14.4
Bureau	5.6	5.6	14.1	11.4	8.6	11.4	17.2	22.9	11.4	11.4
Calhoun	0.0	19.7	39.3	0.0	0.0	0.0	0.0	19.7	0.0	0.0
Carroll	6.0	6.0	0.0	6.5	6.5	6.5	19.5	19.5	6.5	13.0
Cass	21.9	21.9	14.6	22.0	29.3	51.3	22.0	36.7	7.3	36.7
Champaign	242.7	176.4	180.3	151.2	196.9	204.4	196.4	189.0	156.7	181.0
Christian	45.2	8.5	25.4	37.4	25.9	25.9	25.9	28.7	71.8	40.2
Clark	23.5	0.0	0.0	12.2	12.2	18.4	6.1	18.4	6.1	30.6
Clay	0.0	13.7	13.7	7.2	21.7	21.7	7.2	7.2	14.5	29.0
Clinton	25.3	28.1	31.0	37.1	42.4	26.5	45.0	26.5	26.5	15.9
Coles	50.8	48.9	77.1	65.0	59.4	61.3	85.4	46.4	40.8	100.2
Cook County Total	229.5	246.0	247.9	194.9	209.5	231.8	203.1	200.0	213.3	262.0
<i>Chicago</i>	324.2	362.9	380.1	290.5	321.0	360.4	311.7	308.1	325.9	402.0
<i>Suburban Cook County</i>	118.9	109.6	93.6	91.7	89.2	93.1	86.0	83.3	91.9	110.9
Crawford	9.8	0.0	9.8	0.0	25.2	25.2	5.0	10.1	25.2	15.1
Cumberland	0.0	8.9	44.4	36.2	27.2	9.1	0.0	18.1	0.0	54.3
DeKalb	82.1	68.6	79.8	80.8	68.5	75.1	75.1	68.5	62.8	83.7
DeWitt	29.8	11.9	11.9	18.1	6.0	12.1	54.3	12.1	30.2	30.2
Douglas	5.0	15.1	25.1	5.0	20.0	15.0	20.0	10.0	20.0	30.0
DuPage	27.8	29.6	24.9	24.3	26.3	26.1	28.1	26.4	33.5	42.5
Edgar	15.2	5.1	0.0	21.5	0.0	26.9	16.1	0.0	0.0	53.8
Edwards	0.0	0.0	0.0	0.0	0.0	14.9	14.9	0.0	0.0	74.4
Effingham	0.0	8.8	5.8	20.4	23.4	11.7	14.6	14.6	17.5	38.0
Fayette	22.9	27.5	4.6	4.5	45.2	13.6	9.0	4.5	27.1	31.6
Ford	42.1	28.1	7.0	56.8	28.4	42.6	14.2	14.2	42.6	49.7
Franklin	17.9	25.6	28.2	37.9	35.4	20.2	22.7	65.7	35.4	60.7
Fulton	18.3	23.5	13.1	8.1	13.5	32.4	21.6	21.6	16.2	51.3
Gallatin	15.5	0.0	0.0	0.0	17.9	0.0	17.9	35.8	71.6	35.8
Greene	67.7	13.5	20.3	21.6	14.4	28.8	0.0	7.2	7.2	28.8
Grundy	13.3	10.7	5.3	4.0	8.0	10.0	12.0	22.0	14.0	24.0
Hamilton	11.6	11.6	46.4	23.6	11.8	0.0	0.0	11.8	11.8	23.6
Hancock	14.9	5.0	0.0	5.2	5.2	0.0	15.7	10.5	10.5	5.2
Hardin	20.8	0.0	0.0	0.0	69.4	23.1	0.0	0.0	23.1	23.1
Henderson	0.0	12.2	0.0	13.6	13.6	13.6	13.6	0.0	0.0	109.1
Henry	31.4	23.5	19.6	29.7	21.8	21.8	31.7	23.8	21.8	21.8
Iroquois	16.0	6.4	12.8	3.4	6.7	20.2	10.1	16.8	26.9	10.1
Jackson	226.5	196.3	189.6	187.7	215.9	232.5	152.8	159.4	224.2	186.0
Jasper	0.0	9.9	0.0	0.0	20.6	10.3	0.0	10.3	41.2	10.3
Jefferson	94.9	109.9	117.4	121.0	90.1	118.5	74.7	69.5	51.5	105.6
Jersey	4.6	13.8	18.5	8.7	17.4	13.1	13.1	21.8	30.5	17.4
Jo Daviess	13.5	9.0	9.0	4.4	8.8	13.2	13.2	30.9	17.6	13.2
Johnson	62.1	85.4	7.8	7.9	71.5	71.5	31.8	47.7	23.8	87.4
Kane	66.8	69.0	56.7	40.4	37.3	43.1	40.6	46.2	62.3	90.2
Kankakee	276.4	193.6	192.6	178.1	173.6	168.4	149.0	113.7	126.0	144.6

County	2007	2008	2009	2010	2011	2012	2013	2014	2015	2016
Kendall	25.7	44.0	42.2	27.0	14.8	20.9	20.0	29.6	44.4	71.5
Knox	128.9	125.4	166.6	58.6	49.1	88.8	103.9	90.7	98.3	113.4
La Salle	52.9	28.7	26.9	11.4	17.6	29.0	54.4	57.1	26.3	43.0
Lake	72.8	85.0	68.3	42.8	51.5	52.2	64.8	57.6	58.3	68.8
Lawrence	19.4	19.4	0.0	11.9	29.7	41.6	17.8	5.9	59.4	23.8
Lee	33.3	16.6	41.6	33.3	30.5	50.0	30.5	25.0	11.1	27.8
Livingston	103.3	68.0	45.4	43.6	56.5	118.1	48.8	15.4	35.9	48.8
Logan	67.3	83.4	89.8	105.6	79.2	145.2	66.0	72.6	95.7	145.2
Macon	353.1	277.2	267.6	219.4	157.1	218.5	353.9	305.1	279.9	319.6
Macoupin	22.4	16.3	12.2	31.4	37.7	35.6	12.6	31.4	29.3	37.7
Madison	124.7	103.9	65.7	72.4	82.8	78.7	64.2	75.4	91.0	99.2
Marion	67.2	40.8	38.4	45.6	101.4	88.7	68.5	33.0	50.7	55.8
Marshall	0.0	37.9	15.2	0.0	0.0	7.9	47.5	39.6	7.9	23.7
Mason	31.2	6.2	31.2	34.1	40.9	27.3	13.6	0.0	27.3	13.6
Massac	85.7	131.9	52.8	58.3	51.9	51.9	32.4	45.4	129.6	64.8
McDonough	51.7	18.2	36.5	33.7	70.5	88.9	70.5	70.5	58.3	85.9
McHenry	17.7	9.6	13.5	9.4	10.7	12.6	10.4	13.0	17.8	29.1
McLean	144.9	140.9	69.1	113.2	113.2	168.1	110.9	84.3	77.3	126.8
Menard	72.1	64.1	80.1	118.1	31.5	55.1	23.6	47.2	23.6	55.1
Mercer	29.5	17.7	35.4	12.2	12.2	6.1	30.4	18.3	24.3	30.4
Monroe	14.5	14.5	18.1	0.0	27.3	30.3	27.3	15.2	33.4	9.1
Montgomery	22.8	16.3	26.1	16.6	10.0	13.3	26.6	13.3	49.8	29.9
Morgan	152.9	114.7	46.4	30.9	53.5	36.6	84.4	101.3	73.1	73.1
Moultrie	28.0	35.0	28.0	13.5	6.7	6.7	26.9	13.5	20.2	47.2
Ogle	21.6	31.4	27.4	5.6	7.5	16.8	22.4	26.2	31.8	24.3
Peoria	492.8	425.2	359.8	278.3	348.5	337.8	291.2	241.3	250.9	323.3
Perry	43.3	60.6	47.6	76.1	71.6	49.2	35.8	26.8	67.1	44.7
Piatt	12.2	18.3	48.9	29.9	17.9	12.0	17.9	12.0	6.0	23.9
Pike	23.0	11.5	23.0	12.2	6.1	0.0	12.2	18.3	12.2	0.0
Pope	0.0	271.9	158.6	67.1	111.9	67.1	44.7	89.5	44.7	44.7
Pulaski	176.9	258.6	136.1	129.8	113.6	162.3	113.6	97.4	211.0	292.2
Putnam	0.0	0.0	16.4	16.7	16.7	33.3	33.3	0.0	0.0	16.7
Randolph	91.5	64.9	38.4	44.8	35.8	68.7	23.9	23.9	20.9	23.9
Richland	0.0	6.2	6.2	6.2	0.0	30.8	37.0	37.0	43.1	98.6
Rock Island	180.8	141.3	204.9	183.0	181.6	119.3	76.6	53.5	86.8	73.2
Saline	26.2	52.4	33.7	40.1	60.2	40.1	52.2	32.1	64.2	48.2
Sangamon	344.0	327.1	371.5	270.9	253.2	245.6	236.5	181.3	190.4	262.8
Schuyler	0.0	13.9	0.0	0.0	66.3	0.0	13.3	13.3	26.5	0.0
Scott	90.3	36.1	18.1	0.0	0.0	18.7	112.0	74.7	18.7	0.0
Shelby	17.5	30.6	8.7	13.4	0.0	13.4	0.0	8.9	58.1	49.2
St. Clair	413.5	355.7	257.3	228.5	288.5	244.4	197.4	232.9	256.6	301.8
Stark	15.8	0.0	31.6	16.7	0.0	0.0	66.7	16.7	16.7	33.4
Stephenson	216.4	251.1	110.3	134.1	117.4	79.6	96.4	119.5	119.5	111.1
Tazewell	40.5	28.0	28.0	31.0	31.8	31.8	42.1	34.0	35.5	40.6
Union	27.3	10.9	32.8	22.5	33.7	0.0	28.1	28.1	39.3	44.9
Vermilion	357.5	259.8	188.3	101.7	213.2	161.7	209.5	211.9	158.0	236.4
Wabash	7.7	0.0	46.4	8.4	0.0	33.5	50.2	41.9	100.4	16.7
Warren	58.7	26.7	0.0	16.9	0.0	11.3	16.9	16.9	39.5	39.5
Washington	6.6	26.4	13.2	40.8	0.0	20.4	20.4	6.8	0.0	13.6

County	2007	2008	2009	2010	2011	2012	2013	2014	2015	2016
Wayne	5.8	17.5	17.5	59.7	11.9	23.9	29.8	0.0	11.9	29.8
White	6.5	6.5	0.0	0.0	34.1	20.5	6.8	13.6	6.8	6.8
Whiteside	59.4	59.4	44.5	41.0	32.5	25.6	46.2	34.2	22.2	32.5
Will	92.8	78.4	73.1	55.3	55.6	51.5	49.4	54.0	57.6	74.4
Williamson	48.9	50.6	57.1	60.3	48.2	42.2	43.7	33.2	55.8	104.0
Winnebago	310.7	264.7	250.7	135.8	142.2	129.4	156.5	150.4	190.7	240.8
Woodford	22.6	16.9	25.4	20.7	20.7	12.9	18.1	36.2	12.9	36.2
Total Illinois	167.6	166.5	160.7	123.0	132.8	141.5	128.3	124.5	133.5	165.2
Illinois Excluding Chicago	120.0	106.7	94.0	78.4	82.7	83.2	79.6	75.6	82.3	102.2

Table 11. Illinois Reported Primary and Secondary Syphilis Cases by County, 2007-2016

County	2007	2008	2009	2010	2011	2012	2013	2014	2015	2016
Adams	0	0	0	0	0	0	0	0	2	0
Alexander	0	0	0	0	0	0	0	0	0	0
Bond	0	1	0	0	0	0	0	0	0	0
Boone	0	0	0	0	2	2	1	1	1	1
Brown	0	0	0	0	0	0	0	0	0	0
Bureau	0	0	1	0	1	1	0	1	2	2
Calhoun	0	0	0	0	0	0	0	0	0	0
Carroll	0	0	0	0	0	0	0	0	0	0
Cass	0	0	0	0	0	0	0	0	0	0
Champaign	1	5	3	3	5	9	3	1	6	6
Christian	0	0	0	0	0	0	0	0	1	1
Clark	0	0	0	0	0	0	0	0	0	0
Clay	0	0	0	1	0	0	0	0	0	0
Clinton	0	0	0	0	0	1	0	0	0	0
Coles	0	0	0	0	1	1	0	1	2	1
Cook County Total	391	488	634	799	773	679	694	724	915	1,018
<i>Chicago</i>	331	425	561	691	675	585	623	643	757	813
<i>Suburban Cook County</i>	60	63	73	108	98	94	71	81	158	205
Crawford	1	0	0	0	0	0	0	0	0	0
Cumberland	0	0	0	0	0	0	0	0	0	0
DeKalb	1	1	4	1	3	4	1	0	2	1
DeWitt	0	0	0	0	0	0	1	0	1	0
Douglas	0	1	0	0	0	0	0	0	0	0
DuPage	12	10	20	15	15	10	18	19	22	34
Edgar	0	0	0	0	0	0	0	0	0	0
Edwards	0	0	0	0	0	0	0	0	0	0
Effingham	0	0	0	0	0	2	0	0	0	0
Fayette	0	0	0	1	0	1	0	0	0	0
Ford	0	0	0	0	0	0	0	0	0	0
Franklin	0	0	0	0	0	0	0	0	0	0
Fulton	1	0	0	0	0	0	0	0	0	0
Gallatin	0	0	0	0	0	0	0	0	0	0
Greene	0	0	0	0	0	0	0	0	0	1
Grundy	0	0	0	1	0	0	0	0	0	1
Hamilton	0	0	0	0	0	0	0	0	0	0
Hancock	0	0	0	0	0	0	0	0	0	0
Hardin	0	0	0	0	0	0	0	0	0	0
Henderson	1	0	0	0	0	0	0	0	0	0
Henry	0	0	0	0	0	0	1	1	0	0
Iroquois	0	1	0	0	0	0	0	1	0	0
Jackson	1	1	6	1	1	10	1	6	4	2
Jasper	0	0	0	0	0	1	2	2	0	0
Jefferson	0	0	0	0	0	0	1	1	4	0
Jersey	1	0	0	0	0	0	0	0	0	0
Jo Daviess	0	0	0	0	0	0	1	0	0	0
Johnson	1	0	2	1	0	0	0	0	0	0
Kane	4	3	6	7	7	9	9	12	12	15
Kankakee	0	0	2	2	1	1	3	2	5	3

County	2007	2008	2009	2010	2011	2012	2013	2014	2015	2016
Kendall	1	0	0	0	1	2	1	1	0	3
Knox	0	0	0	2	2	0	1	1	0	2
La Salle	1	0	1	1	1	3	0	2	6	3
Lake	8	5	17	14	12	9	6	12	21	28
Lawrence	0	0	0	1	0	2	0	0	0	0
Lee	0	0	0	0	1	0	0	0	1	1
Livingston	0	2	0	1	1	0	0	0	0	0
Logan	0	0	0	0	0	1	0	0	1	2
Macon	0	2	2	1	4	4	1	4	0	4
Macoupin	0	0	0	0	0	0	0	0	0	0
Madison	3	6	2	2	3	2	2	0	5	10
Marion	0	0	0	1	2	1	0	0	0	0
Marshall	0	0	0	0	0	0	0	0	0	0
Mason	0	0	0	0	0	0	0	0	0	0
Massac	0	0	0	0	0	0	1	0	0	0
McDonough	0	0	0	0	0	0	0	0	0	2
McHenry	0	0	1	2	2	0	2	3	2	5
McLean	4	1	1	3	7	1	3	3	2	4
Menard	0	0	0	1	0	0	0	0	0	0
Mercer	0	0	0	0	0	0	0	0	0	0
Monroe	0	1	0	1	0	0	0	1	0	1
Montgomery	0	0	0	0	1	0	0	0	0	0
Morgan	0	0	0	1	0	1	1	0	0	1
Moultrie	0	0	0	0	1	0	0	0	0	0
Ogle	0	1	0	0	0	0	0	0	0	1
Peoria	4	1	1	3	2	3	2	1	6	10
Perry	0	0	1	0	0	0	0	0	1	0
Piatt	0	0	0	0	0	0	0	0	0	0
Pike	0	0	0	0	0	0	0	1	0	0
Pope	0	0	0	0	0	0	0	0	0	0
Pulaski	0	0	0	0	1	0	0	0	0	0
Putnam	0	0	0	0	0	0	0	0	0	0
Randolph	0	0	0	0	1	0	1	1	0	1
Richland	0	0	0	0	0	2	0	0	0	0
Rock Island	0	2	4	1	1	2	1	9	0	5
Saline	0	0	1	0	0	0	0	0	0	0
Sangamon	1	0	0	0	6	0	4	14	10	10
Schuyler	0	0	0	0	0	0	0	0	0	0
Scott	0	0	0	0	0	0	0	0	0	0
Shelby	0	0	0	0	0	1	0	0	0	0
St. Clair	19	9	10	16	7	3	5	16	11	21
Stark	0	0	0	0	0	0	0	0	0	0
Stephenson	0	0	0	1	1	0	0	2	0	1
Tazewell	0	1	1	0	1	0	1	0	0	1
Union	0	0	0	0	0	0	0	0	0	0
Vermilion	0	0	3	1	1	1	1	2	1	1
Wabash	0	0	0	0	0	0	0	0	0	0
Warren	0	0	0	0	0	0	0	0	0	0
Washington	0	0	0	0	1	0	0	0	0	0

County	2007	2008	2009	2010	2011	2012	2013	2014	2015	2016
Wayne	0	0	0	0	0	0	1	1	0	1
White	0	0	0	0	0	1	1	0	0	0
Whiteside	0	0	0	0	0	0	1	0	1	1
Will	4	10	13	17	7	22	14	12	32	46
Williamson	1	0	1	1	0	0	0	2	0	1
Winnebago	3	2	13	5	5	11	12	3	6	8
Woodford	0	0	0	0	0	0	0	0	0	0
Total Illinois	464	554	750	908	881	803	798	863	1,085	1,260
Illinois Excluding Chicago	133	129	189	217	206	218	175	220	328	447

Table 12. Illinois Reported Primary and Secondary Syphilis Rates per 100,000 Population by County, 2007-2016

County	2007	2008	2009	2010	2011	2012	2013	2014	2015	2016
Adams	0.0	0.0	0.0	0.0	0.0	0.0	0.0	0.0	3.0	0.0
Alexander	0.0	0.0	0.0	0.0	0.0	0.0	0.0	0.0	0.0	0.0
Bond	0.0	5.7	0.0	0.0	0.0	0.0	0.0	0.0	0.0	0.0
Boone	0.0	0.0	0.0	0.0	3.7	3.7	1.8	1.8	1.8	1.8
Brown	0.0	0.0	0.0	0.0	0.0	0.0	0.0	0.0	0.0	0.0
Bureau	0.0	0.0	2.8	0.0	2.9	2.9	0.0	2.9	5.7	5.7
Calhoun	0.0	0.0	0.0	0.0	0.0	0.0	0.0	0.0	0.0	0.0
Carroll	0.0	0.0	0.0	0.0	0.0	0.0	0.0	0.0	0.0	0.0
Cass	0.0	0.0	0.0	0.0	0.0	0.0	0.0	0.0	0.0	0.0
Champaign	0.6	2.8	1.7	1.5	2.5	4.5	1.5	0.5	3.0	3.0
Christian	0.0	0.0	0.0	0.0	0.0	0.0	0.0	0.0	2.9	2.9
Clark	0.0	0.0	0.0	0.0	0.0	0.0	0.0	0.0	0.0	0.0
Clay	0.0	0.0	0.0	7.2	0.0	0.0	0.0	0.0	0.0	0.0
Clinton	0.0	0.0	0.0	0.0	0.0	2.6	0.0	0.0	0.0	0.0
Coles	0.0	0.0	0.0	0.0	1.9	1.9	0.0	1.9	3.7	1.9
Cook County Total	7.3	9.1	11.8	15.4	14.9	13.1	13.4	13.9	17.6	19.6
<i>Chicago</i>	11.4	14.7	19.4	25.6	25.0	21.7	23.1	23.9	28.1	30.2
<i>Suburban Cook County</i>	2.4	2.5	2.9	4.3	3.9	3.8	2.8	3.2	6.3	8.2
Crawford	4.9	0.0	0.0	0.0	0.0	0.0	0.0	0.0	0.0	0.0
Cumberland	0.0	0.0	0.0	0.0	0.0	0.0	0.0	0.0	0.0	0.0
DeKalb	1.1	1.1	4.5	1.0	2.9	3.8	1.0	0.0	1.9	1.0
DeWitt	0.0	0.0	0.0	0.0	0.0	0.0	6.0	0.0	6.0	0.0
Douglas	0.0	5.0	0.0	0.0	0.0	0.0	0.0	0.0	0.0	0.0
DuPage	1.3	1.1	2.2	1.6	1.6	1.1	2.0	2.1	2.4	3.7
Edgar	0.0	0.0	0.0	0.0	0.0	0.0	0.0	0.0	0.0	0.0
Edwards	0.0	0.0	0.0	0.0	0.0	0.0	0.0	0.0	0.0	0.0
Effingham	0.0	0.0	0.0	0.0	0.0	5.8	0.0	0.0	0.0	0.0
Fayette	0.0	0.0	0.0	4.5	0.0	4.5	0.0	0.0	0.0	0.0
Ford	0.0	0.0	0.0	0.0	0.0	0.0	0.0	0.0	0.0	0.0
Franklin	0.0	0.0	0.0	0.0	0.0	0.0	0.0	0.0	0.0	0.0
Fulton	2.6	0.0	0.0	0.0	0.0	0.0	0.0	0.0	0.0	0.0
Gallatin	0.0	0.0	0.0	0.0	0.0	0.0	0.0	0.0	0.0	0.0
Greene	0.0	0.0	0.0	0.0	0.0	0.0	0.0	0.0	0.0	7.2
Grundy	0.0	0.0	0.0	2.0	0.0	0.0	0.0	0.0	0.0	2.0
Hamilton	0.0	0.0	0.0	0.0	0.0	0.0	0.0	0.0	0.0	0.0
Hancock	0.0	0.0	0.0	0.0	0.0	0.0	0.0	0.0	0.0	0.0
Hardin	0.0	0.0	0.0	0.0	0.0	0.0	0.0	0.0	0.0	0.0
Henderson	12.2	0.0	0.0	0.0	0.0	0.0	0.0	0.0	0.0	0.0
Henry	0.0	0.0	0.0	0.0	0.0	0.0	2.0	2.0	0.0	0.0
Iroquois	0.0	3.2	0.0	0.0	0.0	0.0	0.0	3.4	0.0	0.0
Jackson	1.7	1.7	10.1	1.7	1.7	16.6	1.7	10.0	6.6	3.3
Jasper	0.0	0.0	0.0	0.0	0.0	10.3	20.6	20.6	0.0	0.0
Jefferson	0.0	0.0	0.0	0.0	0.0	0.0	2.6	2.6	10.3	0.0
Jersey	4.6	0.0	0.0	0.0	0.0	0.0	0.0	0.0	0.0	0.0
Jo Daviess	0.0	0.0	0.0	0.0	0.0	0.0	4.4	0.0	0.0	0.0
Johnson	7.8	0.0	15.5	7.9	0.0	0.0	0.0	0.0	0.0	0.0
Kane	1.0	0.7	1.5	1.4	1.4	1.7	1.7	2.3	2.3	2.9
Kankakee	0.0	0.0	1.9	1.8	0.9	0.9	2.6	1.8	4.4	2.6

County	2007	2008	2009	2010	2011	2012	2013	2014	2015	2016
Kendall	1.8	0.0	0.0	0.0	0.9	1.7	0.9	0.9	0.0	2.6
Knox	0.0	0.0	0.0	3.8	3.8	0.0	1.9	1.9	0.0	3.8
La Salle	0.9	0.0	0.9	0.9	0.9	2.6	0.0	1.8	5.3	2.6
Lake	1.2	0.8	2.6	2.0	1.7	1.3	0.9	1.7	3.0	4.0
Lawrence	0.0	0.0	0.0	5.9	0.0	11.9	0.0	0.0	0.0	0.0
Lee	0.0	0.0	0.0	0.0	2.8	0.0	0.0	0.0	2.8	2.8
Livingston	0.0	5.0	0.0	2.6	2.6	0.0	0.0	0.0	0.0	0.0
Logan	0.0	0.0	0.0	0.0	0.0	3.3	0.0	0.0	3.3	6.6
Macon	0.0	1.7	1.7	0.9	3.6	3.6	0.9	3.6	0.0	3.6
Macoupin	0.0	0.0	0.0	0.0	0.0	0.0	0.0	0.0	0.0	0.0
Madison	1.2	2.3	0.8	0.7	1.1	0.7	0.7	0.0	1.9	3.7
Marion	0.0	0.0	0.0	2.5	5.1	2.5	0.0	0.0	0.0	0.0
Marshall	0.0	0.0	0.0	0.0	0.0	0.0	0.0	0.0	0.0	0.0
Mason	0.0	0.0	0.0	0.0	0.0	0.0	0.0	0.0	0.0	0.0
Massac	0.0	0.0	0.0	0.0	0.0	0.0	6.5	0.0	0.0	0.0
McDonough	0.0	0.0	0.0	0.0	0.0	0.0	0.0	0.0	0.0	6.1
McHenry	0.0	0.0	0.4	0.6	0.6	0.0	0.6	1.0	0.6	1.6
McLean	2.7	0.7	0.7	1.8	4.1	0.6	1.8	1.8	1.2	2.4
Menard	0.0	0.0	0.0	7.9	0.0	0.0	0.0	0.0	0.0	0.0
Mercer	0.0	0.0	0.0	0.0	0.0	0.0	0.0	0.0	0.0	0.0
Monroe	0.0	3.6	0.0	3.0	0.0	0.0	0.0	3.0	0.0	3.0
Montgomery	0.0	0.0	0.0	0.0	3.3	0.0	0.0	0.0	0.0	0.0
Morgan	0.0	0.0	0.0	2.8	0.0	2.8	2.8	0.0	0.0	2.8
Moultrie	0.0	0.0	0.0	0.0	6.7	0.0	0.0	0.0	0.0	0.0
Ogle	0.0	2.0	0.0	0.0	0.0	0.0	0.0	0.0	0.0	1.9
Peoria	2.2	0.5	0.5	1.6	1.1	1.6	1.1	0.5	3.2	5.4
Perry	0.0	0.0	4.3	0.0	0.0	0.0	0.0	0.0	4.5	0.0
Piatt	0.0	0.0	0.0	0.0	0.0	0.0	0.0	0.0	0.0	0.0
Pike	0.0	0.0	0.0	0.0	0.0	0.0	0.0	6.1	0.0	0.0
Pope	0.0	0.0	0.0	0.0	0.0	0.0	0.0	0.0	0.0	0.0
Pulaski	0.0	0.0	0.0	0.0	16.2	0.0	0.0	0.0	0.0	0.0
Putnam	0.0	0.0	0.0	0.0	0.0	0.0	0.0	0.0	0.0	0.0
Randolph	0.0	0.0	0.0	0.0	3.0	0.0	3.0	3.0	0.0	3.0
Richland	0.0	0.0	0.0	0.0	0.0	12.3	0.0	0.0	0.0	0.0
Rock Island	0.0	1.3	2.7	0.7	0.7	1.4	0.7	6.1	0.0	3.4
Saline	0.0	0.0	3.7	0.0	0.0	0.0	0.0	0.0	0.0	0.0
Sangamon	0.5	0.0	0.0	0.0	3.0	0.0	2.0	7.1	5.1	5.1
Schuyler	0.0	0.0	0.0	0.0	0.0	0.0	0.0	0.0	0.0	0.0
Scott	0.0	0.0	0.0	0.0	0.0	0.0	0.0	0.0	0.0	0.0
Shelby	0.0	0.0	0.0	0.0	0.0	4.5	0.0	0.0	0.0	0.0
St. Clair	7.4	3.5	3.9	5.9	2.6	1.1	1.9	5.9	4.1	7.8
Stark	0.0	0.0	0.0	0.0	0.0	0.0	0.0	0.0	0.0	0.0
Stephenson	0.0	0.0	0.0	2.1	2.1	0.0	0.0	4.2	0.0	2.1
Tazewell	0.0	0.8	0.8	0.0	0.7	0.0	0.7	0.0	0.0	0.7
Union	0.0	0.0	0.0	0.0	0.0	0.0	0.0	0.0	0.0	0.0
Vermilion	0.0	0.0	3.6	1.2	1.2	1.2	1.2	2.5	1.2	1.2
Wabash	0.0	0.0	0.0	0.0	0.0	0.0	0.0	0.0	0.0	0.0
Warren	0.0	0.0	0.0	0.0	0.0	0.0	0.0	0.0	0.0	0.0
Washington	0.0	0.0	0.0	0.0	6.8	0.0	0.0	0.0	0.0	0.0

County	2007	2008	2009	2010	2011	2012	2013	2014	2015	2016
Wayne	0.0	0.0	0.0	0.0	0.0	0.0	6.0	6.0	0.0	6.0
White	0.0	0.0	0.0	0.0	0.0	6.8	6.8	0.0	0.0	0.0
Whiteside	0.0	0.0	0.0	0.0	0.0	0.0	1.7	0.0	1.7	1.7
Will	0.8	2.0	2.6	2.5	1.0	3.2	2.1	1.8	4.7	6.8
Williamson	1.6	0.0	1.6	1.5	0.0	0.0	0.0	3.0	0.0	1.5
Winnebago	1.1	0.7	4.7	1.7	1.7	3.7	4.1	1.0	2.0	2.7
Woodford	0.0	0.0	0.0	0.0	0.0	0.0	0.0	0.0	0.0	0.0
Total Illinois	3.7	4.5	6.0	7.1	6.9	6.3	6.2	6.7	8.5	9.8
Illinois Excluding Chicago	1.4	1.4	2.0	2.1	2.0	2.2	1.7	2.2	3.2	4.4

Table 13. Illinois Reported Early Syphilis Cases by County, 2007-2016

County	2007	2008	2009	2010	2011	2012	2013	2014	2015	2016
Adams	0	0	0	0	0	0	0	0	2	0
Alexander	0	0	0	0	0	0	0	0	2	0
Bond	0	1	0	0	0	0	0	0	1	0
Boone	0	0	0	0	2	4	2	1	1	1
Brown	0	0	2	1	3	0	0	0	0	0
Bureau	0	0	1	0	1	1	0	1	3	3
Calhoun	0	0	0	0	0	0	0	0	0	0
Carroll	0	0	0	0	0	0	0	0	0	0
Cass	1	0	0	0	0	0	0	0	0	0
Champaign	4	8	8	5	9	13	6	6	9	16
Christian	0	0	0	0	0	1	0	0	1	2
Clark	0	0	0	0	0	0	0	0	2	0
Clay	0	0	0	1	0	0	0	0	0	0
Clinton	0	0	0	0	0	3	0	0	0	0
Coles	0	0	0	0	2	1	2	4	8	2
Cook County Total	576	716	914	1,228	1,252	1,261	1,377	1,388	1,637	1,938
<i>Chicago</i>	493	618	774	1,065	1,069	1,098	1,214	1,189	1,352	1,562
<i>Suburban Cook County</i>	83	98	140	163	183	163	163	199	285	376
Crawford	3	1	2	0	0	2	0	0	0	1
Cumberland	0	0	0	0	0	0	0	0	0	0
DeKalb	1	1	4	3	4	7	4	1	4	4
DeWitt	0	0	0	0	0	0	1	0	1	0
Douglas	0	1	0	0	0	0	0	0	0	0
DuPage	18	18	33	25	23	19	34	41	42	59
Edgar	0	1	0	0	0	0	0	0	1	0
Edwards	0	0	0	0	0	0	0	0	0	0
Effingham	0	0	0	0	0	2	0	0	0	0
Fayette	0	1	0	2	0	1	1	0	1	0
Ford	0	0	0	0	0	0	0	0	0	0
Franklin	0	0	0	1	0	0	0	1	0	0
Fulton	1	0	0	0	1	0	0	1	0	0
Gallatin	0	0	0	0	0	0	0	0	1	0
Greene	0	0	0	0	0	0	0	0	0	1
Grundy	0	0	0	1	0	0	0	1	1	2
Hamilton	0	0	0	0	0	0	0	0	0	0
Hancock	0	0	0	0	0	0	0	0	0	0
Hardin	0	0	0	0	0	0	0	0	0	0
Henderson	1	0	0	0	0	0	0	0	0	0
Henry	0	0	0	0	0	0	2	1	0	0
Iroquois	0	1	0	0	0	0	0	1	0	0
Jackson	2	1	6	1	3	14	3	10	10	6
Jasper	0	0	0	0	0	1	2	2	0	0
Jefferson	1	0	0	2	0	2	2	2	4	2
Jersey	1	0	1	0	0	0	0	0	0	0
Jo Daviess	0	0	0	0	0	0	1	0	2	1
Johnson	3	0	2	2	2	1	0	2	1	1
Kane	7	7	6	11	11	12	13	21	25	36
Kankakee	0	2	2	2	1	1	6	2	8	12

County	2007	2008	2009	2010	2011	2012	2013	2014	2015	2016
Kendall	1	0	0	0	1	2	5	4	1	3
Knox	0	0	1	2	3	0	2	3	0	5
LaSalle	2	0	1	2	1	4	1	6	8	5
Lake	11	6	21	28	28	27	31	20	36	53
Lawrence	0	0	0	1	0	4	0	0	0	0
Lee	0	0	0	0	2	0	0	0	2	3
Livingston	0	2	0	2	1	0	0	1	1	0
Logan	0	1	0	0	3	1	0	2	2	7
Macon	0	2	3	1	9	4	4	6	3	7
Macoupin	0	0	0	0	0	0	0	0	0	2
Madison	3	8	4	8	5	8	6	1	7	12
Marion	0	0	2	1	2	3	0	0	0	0
Marshall	0	0	0	0	0	0	0	0	0	1
Mason	0	0	0	0	0	0	0	0	0	0
Massac	0	0	1	0	0	0	1	0	0	0
McDonough	0	0	0	0	1	0	0	0	3	2
McHenry	1	0	2	3	4	1	5	4	7	11
McLean	5	3	1	3	10	3	7	8	2	7
Menard	0	0	0	1	0	0	0	0	0	0
Mercer	0	0	0	0	0	0	0	0	0	0
Monroe	0	1	0	2	1	0	0	1	0	1
Montgomery	0	0	0	0	1	0	1	0	1	0
Morgan	0	0	1	1	2	2	1	0	0	1
Moultrie	0	0	0	0	1	0	0	1	0	0
Ogle	0	1		0	0	0	0	0	0	1
Peoria	4	1	1	3	5	5	4	2	11	12
Perry	0	0	1	1	4	2	0	0	1	0
Piatt	0	0	0	0	0	0	0	0	0	1
Pike	0	0	0	0	1	0	0	1	0	0
Pope	1	0	0	0	0	2	0	0	0	0
Pulaski	0	0	0	0	1	0	0	0	0	0
Putnam	0	0	0	0	0	0	0	0	0	0
Randolph	1	0	0	0	1	0	2	2	2	1
Richland	0	0	0	0	0	2	0	0	0	1
Rock Island	0	3	5	2	4	8	6	19	8	13
Saline	0	0	1	0	0	0	0	0	0	0
Sangamon	4	1	0	0	9	8	12	25	14	18
Schuyler	0	0	0	0	0	0	0	0	0	0
Scott	0	0	0	0	0	0	0	0	0	0
Shelby	0	0	0	0	0	1	0	1	0	0
St. Clair	24	15	20	30	14	9	11	36	21	34
Stark	0	0	0	0	0	0	0	0	0	0
Stephenson	0	0	0	1	1	0	0	2	0	1
Tazewell	0	1	1	0	1	1	3	4	1	1
Union	0	1	0	0	0	0	0	0	0	0
Vermilion	0	0	6	2	3	1	7	6	2	2
Wabash	0	0	0	0	0	0	0	0	0	0
Warren	2	0	0	0	0	0	0	0	0	0
Washington	0	0	1	0	1	0	0	0	0	0

County	2007	2008	2009	2010	2011	2012	2013	2014	2015	2016
Wayne	0	0	0	0	0	0	1	1	0	1
White	0	0	0	0	0	1	1	0	1	0
Whiteside	0	0	0	0	0	0	1	0	1	2
Will	5	12	23	23	20	34	20	29	57	81
Williamson	1	0	1	1	0	1	0	3	0	3
Winnebago	4	8	16	7	8	19	19	8	15	19
Woodford	0	0	0	0	0	1	0	0	0	0
Total Illinois	688	825	1,094	1,410	1,462	1,500	1,607	1,682	1,974	2,398
Illinois Excluding Chicago	195	207	320	345	393	402	393	493	622	836

Table 14. Illinois Reported Early Syphilis Rates per 100,000 Population by County, 2007-2016

County	2007	2008	2009	2010	2011	2012	2013	2014	2015	2016
Adams	0.0	0.0	0.0	0.0	0.0	0.0	0.0	0.0	3.0	0.0
Alexander	0.0	0.0	0.0	0.0	0.0	0.0	0.0	0.0	24.3	0.0
Bond	0.0	5.7	0.0	0.0	0.0	0.0	0.0	0.0	5.6	0.0
Boone	0.0	0.0	0.0	0.0	3.7	7.4	3.7	1.8	1.8	1.8
Brown	0.0	0.0	28.8	14.4	43.2	0.0	0.0	0.0	0.0	0.0
Bureau	0.0	0.0	2.8	0.0	2.9	2.9	0.0	2.9	8.6	8.6
Calhoun	0.0	0.0	0.0	0.0	0.0	0.0	0.0	0.0	0.0	0.0
Carroll	0.0	0.0	0.0	0.0	0.0	0.0	0.0	0.0	0.0	0.0
Cass	7.3	0.0	0.0	0.0	0.0	0.0	0.0	0.0	0.0	0.0
Champaign	2.2	4.5	4.5	2.5	4.5	6.5	3.0	3.0	4.5	8.0
Christian	0.0	0.0	0.0	0.0	0.0	2.9	0.0	0.0	2.9	5.7
Clark	0.0	0.0	0.0	0.0	0.0	0.0	0.0	0.0	12.2	0.0
Clay	0.0	0.0	0.0	7.2	0.0	0.0	0.0	0.0	0.0	0.0
Clinton	0.0	0.0	0.0	0.0	0.0	7.9	0.0	0.0	0.0	0.0
Coles	0.0	0.0	0.0	0.0	3.7	1.9	3.7	7.4	14.8	3.7
Cook County Total	10.7	13.3	17.0	23.6	24.1	24.3	26.5	26.7	31.5	37.3
<i>Chicago</i>	17.0	21.3	26.7	39.5	39.7	40.7	45.0	44.1	50.2	57.9
<i>Suburban Cook County</i>	3.3	4.0	5.6	6.5	7.3	6.5	6.5	8.0	11.4	15.0
Crawford	14.7	4.9	9.8	0.0	0.0	10.1	0.0	0.0	0.0	5.0
Cumberland	0.0	0.0	0.0	0.0	0.0	0.0	0.0	0.0	0.0	0.0
DeKalb	1.1	1.1	4.5	2.9	3.8	6.7	3.8	1.0	3.8	3.8
DeWitt	0.0	0.0	0.0	0.0	0.0	0.0	6.0	0.0	6.0	0.0
Douglas	0.0	5.0	0.0	0.0	0.0	0.0	0.0	0.0	0.0	0.0
DuPage	2.0	2.0	3.6	2.7	2.5	2.1	3.7	4.5	4.6	6.4
Edgar	0.0	5.1	0.0	0.0	0.0	0.0	0.0	0.0	5.4	0.0
Edwards	0.0	0.0	0.0	0.0	0.0	0.0	0.0	0.0	0.0	0.0
Effingham	0.0	0.0	0.0	0.0	0.0	5.8	0.0	0.0	0.0	0.0
Fayette	0.0	4.6	0.0	9.0	0.0	4.5	4.5	0.0	4.5	0.0
Ford	0.0	0.0	0.0	0.0	0.0	0.0	0.0	0.0	0.0	0.0
Franklin	0.0	0.0	0.0	2.5	0.0	0.0	0.0	2.5	0.0	0.0
Fulton	2.6	0.0	0.0	0.0	2.7	0.0	0.0	2.7	0.0	0.0
Gallatin	0.0	0.0	0.0	0.0	0.0	0.0	0.0	0.0	17.9	0.0
Greene	0.0	0.0	0.0	0.0	0.0	0.0	0.0	0.0	0.0	7.2
Grundy	0.0	0.0	0.0	2.0	0.0	0.0	0.0	2.0	2.0	4.0
Hamilton	0.0	0.0	0.0	0.0	0.0	0.0	0.0	0.0	0.0	0.0
Hancock	0.0	0.0	0.0	0.0	0.0	0.0	0.0	0.0	0.0	0.0
Hardin	0.0	0.0	0.0	0.0	0.0	0.0	0.0	0.0	0.0	0.0
Henderson	12.2	0.0	0.0	0.0	0.0	0.0	0.0	0.0	0.0	0.0
Henry	0.0	0.0	0.0	0.0	0.0	0.0	4.0	2.0	0.0	0.0
Iroquois	0.0	3.2	0.0	0.0	0.0	0.0	0.0	3.4	0.0	0.0
Jackson	3.4	1.7	10.1	1.7	5.0	23.2	5.0	16.6	16.6	10.0
Jasper	0.0	0.0	0.0	0.0	0.0	10.3	20.6	20.6	0.0	0.0
Jefferson	2.5	0.0	0.0	5.2	0.0	5.2	5.2	5.2	10.3	5.2
Jersey	4.6	0.0	4.6	0.0	0.0	0.0	0.0	0.0	0.0	0.0
Jo Daviess	0.0	0.0	0.0	0.0	0.0	0.0	4.4	0.0	8.8	4.4
Johnson	23.3	0.0	15.5	15.9	15.9	7.9	0.0	15.9	7.9	7.9
Kane	1.7	1.7	1.5	2.1	2.1	2.3	2.5	4.1	4.9	7.0
Kankakee	0.0	1.9	1.9	1.8	0.9	0.9	5.3	1.8	7.1	10.6

County	2007	2008	2009	2010	2011	2012	2013	2014	2015	2016
Kendall	1.8	0.0	0.0	0.0	0.9	1.7	4.4	3.5	0.9	2.6
Knox	0.0	0.0	1.8	3.8	5.7	0.0	3.8	5.7	0.0	9.4
LaSalle	1.8	0.0	0.9	1.8	0.9	3.5	0.9	5.3	7.0	4.4
Lake	1.7	0.9	3.3	4.0	4.0	3.8	4.4	2.8	5.1	7.5
Lawrence	0.0	0.0	0.0	5.9	0.0	23.8	0.0	0.0	0.0	0.0
Lee	0.0	0.0	0.0	0.0	5.6	0.0	0.0	0.0	5.6	8.3
Livingston	0.0	5.0	0.0	5.1	2.6	0.0	0.0	2.6	2.6	0.0
Logan	0.0	3.2	0.0	0.0	9.9	3.3	0.0	6.6	6.6	23.1
Macon	0.0	1.7	2.6	0.9	8.1	3.6	3.6	5.4	2.7	6.3
Macoupin	0.0	0.0	0.0	0.0	0.0	0.0	0.0	0.0	0.0	4.2
Madison	1.2	3.1	1.5	3.0	1.9	3.0	2.2	0.4	2.6	4.5
Marion	0.0	0.0	4.8	2.5	5.1	7.6	0.0	0.0	0.0	0.0
Marshall	0.0	0.0	0.0	0.0	0.0	0.0	0.0	0.0	0.0	7.9
Mason	0.0	0.0	0.0	0.0	0.0	0.0	0.0	0.0	0.0	0.0
Massac	0.0	0.0	6.6	0.0	0.0	0.0	6.5	0.0	0.0	0.0
McDonough	0.0	0.0	0.0	0.0	3.1	0.0	0.0	0.0	9.2	6.1
McHenry	0.4	0.0	0.8	1.0	1.3	0.3	1.6	1.3	2.3	3.6
McLean	3.3	2.0	0.7	1.8	5.9	1.8	4.1	4.7	1.2	4.1
Menard	0.0	0.0	0.0	7.9	0.0	0.0	0.0	0.0	0.0	0.0
Mercer	0.0	0.0	0.0	0.0	0.0	0.0	0.0	0.0	0.0	0.0
Monroe	0.0	3.6	0.0	6.1	3.0	0.0	0.0	3.0	0.0	3.0
Montgomery	0.0	0.0	0.0	0.0	3.3	0.0	3.3	0.0	3.3	0.0
Morgan	0.0	0.0	2.7	2.8	5.6	5.6	2.8	0.0	0.0	2.8
Moultrie	0.0	0.0	0.0	0.0	6.7	0.0	0.0	6.7	0.0	0.0
Ogle	0.0	2.0	0.0	0.0	0.0	0.0	0.0	0.0	0.0	1.9
Peoria	2.2	0.5	0.5	1.6	2.7	2.7	2.1	1.1	5.9	6.4
Perry	0.0	0.0	4.3	4.5	17.9	8.9	0.0	0.0	4.5	0.0
Piatt	0.0	0.0	0.0	0.0	0.0	0.0	0.0	0.0	0.0	6.0
Pike	0.0	0.0	0.0	0.0	6.1	0.0	0.0	6.1	0.0	0.0
Pope	22.7	0.0	0.0	0.0	0.0	44.7	0.0	0.0	0.0	0.0
Pulaski	0.0	0.0	0.0	0.0	16.2	0.0	0.0	0.0	0.0	0.0
Putnam	0.0	0.0	0.0	0.0	0.0	0.0	0.0	0.0	0.0	0.0
Randolph	3.0	0.0	0.0	0.0	3.0	0.0	6.0	6.0	6.0	3.0
Richland	0.0	0.0	0.0	0.0	0.0	12.3	0.0	0.0	0.0	6.2
Rock Island	0.0	2.0	3.3	1.4	2.7	5.4	4.1	12.9	5.4	8.8
Saline	0.0	0.0	3.7	0.0	0.0	0.0	0.0	0.0	0.0	0.0
Sangamon	2.1	0.5	0.0	0.0	4.6	4.1	6.1	12.7	7.1	9.1
Schuyler	0.0	0.0	0.0	0.0	0.0	0.0	0.0	0.0	0.0	0.0
Scott	0.0	0.0	0.0	0.0	0.0	0.0	0.0	0.0	0.0	0.0
Shelby	0.0	0.0	0.0	0.0	0.0	4.5	0.0	4.5	0.0	0.0
St. Clair	9.4	5.9	7.8	11.1	5.2	3.3	4.1	13.3	7.8	12.6
Stark	0.0	0.0	0.0	0.0	0.0	0.0	0.0	0.0	0.0	0.0
Stephenson	0.0	0.0	0.0	2.1	2.1	0.0	0.0	4.2	0.0	2.1
Tazewell	0.0	0.8	0.8	0.0	0.7	0.7	2.2	3.0	0.7	0.7
Union	0.0	5.5	0.0	0.0	0.0	0.0	0.0	0.0	0.0	0.0
Vermilion	0.0	0.0	7.1	2.5	3.7	1.2	8.6	7.4	2.5	2.5
Wabash	0.0	0.0	0.0	0.0	0.0	0.0	0.0	0.0	0.0	0.0
Warren	10.7	0.0	0.0	0.0	0.0	0.0	0.0	0.0	0.0	0.0
Washington	0.0	0.0	6.6	0.0	6.8	0.0	0.0	0.0	0.0	0.0

County	2007	2008	2009	2010	2011	2012	2013	2014	2015	2016
Wayne	0.0	0.0	0.0	0.0	0.0	0.0	6.0	6.0	0.0	6.0
White	0.0	0.0	0.0	0.0	0.0	6.8	6.8	0.0	6.8	0.0
Whiteside	0.0	0.0	0.0	0.0	0.0	0.0	1.7	0.0	1.7	3.4
Will	1.0	2.4	4.6	3.4	3.0	5.0	3.0	4.3	8.4	12.0
Williamson	1.6	0.0	1.6	1.5	0.0	1.5	0.0	4.5	0.0	4.5
Winnebago	1.4	2.9	5.7	2.4	2.7	6.4	6.4	2.7	5.1	6.4
Woodford	0.0	0.0	0.0	0.0	0.0	2.6	0.0	0.0	0.0	0.0
Total Illinois	5.5	6.6	8.8	11.0	11.4	11.7	12.5	13.1	15.4	18.7
Illinois Excluding Chicago	2.0	2.2	3.4	3.4	3.9	4.0	3.9	4.9	6.1	8.2

Table 15. Illinois Reported Congenital Syphilis Cases and Rates per 100,000 Live Births, 2007-2016

	2007	2008	2009	2010	2011	2012	2013	2014	2015	2016
Cases	11	21	16	28	18	27	24	27	32	18
Rates	6.1	11.9	9.4	17.0	11.2	17.0	15.3	17.0	20.2	11.4

Resources

Illinois General Assembly. *Control of Sexually Transmissible Infections Code*. 27 May 1988.

<ftp://www.ilga.gov/icar/admincode/077/07700693sections.html>

Illinois General Assembly. *Prenatal Syphilis Act*.

<http://www.ilga.gov/legislation/ilcs/ilcs3.asp?ActID=1553&ChapAct=410%C2%A0ILCS%C2%A0320/&ChapterID=35&ChapterName=PUBLIC%20HEALTH&ActName=Prenatal%20Syphilis%20Act>.

For more information on Illinois STD data please visit the following websites:

Data and Statistics. Sexually Transmitted Disease Section at Illinois Department of Public Health,

<http://dph.illinois.gov/topics-services/diseases-and-conditions/stds/data-statistics>.

State of Illinois Data Portal. State of Illinois, <https://data.illinois.gov/>.

CDC's HIV, Hepatitis, STD, and TB Data Atlas. Centers for Disease Control and Prevention,

<https://gis.cdc.gov/grasp/nchhstpatlas/main.html?value=atlas>.