



# Oral Health Workforce Survey Report

August 2022

**This page is intentionally left blank**

# Acknowledgements

The IDPH Oral Health Section acknowledges the following individuals and organizations for their contributions:

Mona Van Kanegan, DDS, MS, MPH, FICD

Stacey Herman, MBA

Leslie Wise, PhD

Pedro Medina-Cuevas, MPH (CSTE Applied Epi Fellow)

Illinois Oral Health Advisory Committee

J.Price Consulting

The content included in this report may be reproduced with the following citation: (AUTHORS), Oral Health Workforce Survey Report. Springfield, Illinois: Oral Health Section, Illinois Department of Public Health.

Inquiries may be directed to:

Mona Van Kanegan, DDS, MS, MPH, FICD

Chief, Oral Health Section

Illinois Department of Public Health

[mona.vankanegan@illinois.gov](mailto:mona.vankanegan@illinois.gov).





# Oral Health Workforce Survey Report

## Table of Contents

Executive Summary.....	05
Introduction and Background.....	06
Purpose and Significance.....	07
Methods.....	08-10
Summary of Results.....	11
Illinois Oral Health Workforce Trends.....	12
Workforce Demographics.....	13
Specialty Characteristics.....	14-15
Practice Characteristics.....	16-17
Medicaid Practice Locations.....	18
Limitations.....	19
Conclusions and Future Considerations.....	20
Appendices	
References	





# Oral Health Workforce Survey Report

## Executive Summary

A general dentist (DDS or DMD) is the primary care dental provider that diagnoses, treats, and manages overall oral health. Treatment may include fillings, crowns, bridges, gum care, root canals, simple tooth removals, and removable appliances (dentures and partials). A dental hygienist will clean teeth, take X-rays, evaluate for gum infection and periodontal disease, apply sealants and fluoride treatments, and provide home care instructions. Dentists must have a college bachelor's degree and graduate from an accredited dental school. Dental hygienists must graduate from a college dental hygiene program. In Illinois, there are three dental schools and 13 colleges with dental hygiene programs. (1)



The Illinois Department of Public Health (IDPH) is focused on the expansion and support of the oral health workforce across the state and more specifically among Illinois' most underserved communities. To this end, a multi-pronged strategic plan has been developed to increase the number and type of oral health providers and oral health services. To better understand the landscape of the oral health workforce in Illinois, the IDPH deployed an Oral Health Workforce Survey in 2021/2022 to dentists and dental hygienists. Respondents answered questions around individual demographics, specialties, and current and future plans to practice. In addition, respondents were asked questions about their current practice, to include, but not limited to the practice location, type, size, types of services, populations served, and barriers to serving special populations.

Overall, results indicate a predominantly male, White workforce of general dentists in the 55-64 age range. Alternatively, dental hygienists were predominately female, White, in the 55-64 age range. About one-third of dentists indicated they plan to stop practicing in the next 1 - 5 years, while about 25% of dental hygienists indicated the same timeline. Practice characteristics were primarily private/group practices and were closely split between solo and small group\* practices providing direct patient care. The majority of practices indicated serving special populations such as pregnant women, new pediatric patients, and patients with physical and/or developmental/intellectual challenges. However, less than 25% of practices indicated serving Medicaid patients. Of those, the majority indicated accepting new Medicaid patients. The primary Medicaid barriers were low or slow reimbursement.

*\*Small group refers to practices with 2 - 4 full time equivalent (FTE) dentists.*



# Oral Health Workforce Survey Report

## Introduction and Background

In 2021, the IDPH, Oral Health Section developed the *Illinois Oral Health Plan IV: Eliminating Inequities in Oral Health (2021-2025)*. (2) Through a series of community meetings and wide-ranging input, the plan outlines community strategies with a focus on the expansion and support of the oral health workforce in some of Illinois' most underserved communities. The primary goals and objectives set forth by the Illinois Oral Health Plan (IOHP) include but are not limited to the following:

1. Development of a stronger and expanded safety net of oral health providers in federally qualified health centers (FQHCs), local health departments, and other non-profit organizations.
2. Engagement of private practitioners in expanded services and community outreach activities, in support of oral health care visits by low-income and uninsured persons.
3. Growth in workforce and academic training programs for dentists and dental hygienists that are geographically distributed across the state.

In order to support these goals, it is important to understand the current state of the dental workforce in Illinois, to include provider and practice characteristics, scope and location of oral health services, populations served, and emerging issues. The first Illinois Dental Workforce Census Report was published in 2004 and it was followed by reports in 2006, 2015, and 2022. These reports provide important snapshots of the oral health workforce and help identify gaps in services and populations served.

In addition, the Illinois Oral Health Surveillance Plan, developed in 2021, provides a strategic approach to the development and implementation of an oral health surveillance system. (3) The goal of the surveillance system is to monitor state-specific, population-based oral disease burden and community programs (i.e. water fluoridation quality) and measure program impact. The Illinois Oral Health Surveillance Plan aligns with the IOHP IV: *Eliminating Inequities in Oral Health (2021 – 2025)* and Healthy People 2030 (HP2030) Oral Conditions Objectives. (4)

The 2022 Oral Health Workforce Survey for Dentists and Dental Hygienists (referred to as the Illinois Oral Health Workforce Survey) was administered between August 2021 and April 2022 in conjunction with the dentist and dental hygienist license renewal process. The electronic survey was developed to capture new information while preserving data elements to yield trends from prior oral health surveys. The data from these surveys are critical for providing information about the landscape of the oral health workforce in Illinois to enable planning, implementation and evaluation of interventions aimed at building oral health workforce capacity.



# Oral Health Workforce Survey Report

## Purpose and Significance

The primary purpose of the Illinois Oral Health Workforce Survey was to ascertain and monitor the characteristics of the state's oral health workforce. The two distinct surveys (dentists and dental hygienists) were designed to gather characteristics of clinically active dentists and dental hygienists (see Appendix I). The ongoing collection of dental workforce data with license renewal provides insight and the means for tracking distribution and practice trends. Collecting and reporting dental workforce data allows the IDPH's Oral Health Section, decision makers, professional organizations, and academic institutions to view trends over time, and assist in the development of appropriate strategies and policies to ensure that the workforce fulfills citizen demands. The survey results are useful to public health officials, grant writers, dental professionals considering new practice locations and communities, organizations, and agencies to demonstrate workforce needs and strengths. Additional data tables, figures and maps can be found in Appendix II.

The conclusions that can be drawn from this data set are crucial for implementing any significant changes within the oral health workforce. In Illinois, the total population was projected to grow 5% between 2000 and 2020, with those 65 years of age and older projected to grow by 31%. (5) The population growth, coupled with an aging population with older Americans retaining their teeth, implies the need for oral health services will continue to increase. (6) Further constraints exist on the state's dental workforce. There are only three dental schools in Illinois. With the existing dental workforce aging, the necessity of new oral health professionals is imminent. The state's population is becoming more diverse. Oral health care demand by persons with disabilities is growing. Deliberate attention is required to ensure that a competent, diverse and adequate supply of oral health care professionals is available to address the needs in the state.





# Oral Health Workforce Survey Report

## Methods

The IDPH Oral Health Section strives for collaboration and partnership whenever possible. The Illinois Oral Health Workforce Survey was developed by the IDPH Oral Health Section along with contracted subject-matter-experts and in collaboration with the Illinois Oral Health Advisory Committee. The survey was designed to gather characteristics of clinically active dentists and dental hygienists. Characteristics considered for dentists included specialty, full or part-time status, number of practice locations, practice type (solo, group, etc.), if the dentist graduated from an Illinois dental school if they planned to stop practicing clinical dentistry within the next 10 years, and participation in response activities related to COVID-19. Characteristics considered for dental hygienists included number of practice locations, full or part-time status, employed by practice type, if the hygienist graduated from an Illinois dental hygiene program when they planned to stop practicing clinical dental hygiene, and COVID-19 changes to dental hygienists' roles. Additional demographic data was also captured for both professions to include gender, age, race and ethnicity. The survey was distributed electronically through the Research Electronic Data Capture (REDCap™) platform. The official survey was uploaded to REDCap in August 2021 and was made available to the oral health workforce community through April 30, 2022. The survey was sent out via custom links through member email distribution lists and through newsletters. In order to achieve the highest number of responses, the survey was promoted by various stakeholders, including: the Illinois Dental Hygienists Association, Illinois State Dental Society, Deans of dental schools (n=3), State Oral Health hygiene schools (n=13), Illinois Primary Health Care Association and other oral health partners. Specifically, the Illinois Dental Society provided survey promotion by pairing it with the annual dentist license renewal efforts. Finally, the Illinois Department of Financial and Professional Regulation sent a communication in March 2022 through email list serve.

All data included in survey responses were validated (i.e., using license number to remove duplicate responses) and cleaned (i.e., removed missing data and test records). See **Figure 1: Survey Cleaning and Exclusion Criteria - Provider Characteristics**. The following data validation and cleaning methods were implemented for both dental hygienist and dental surveys:

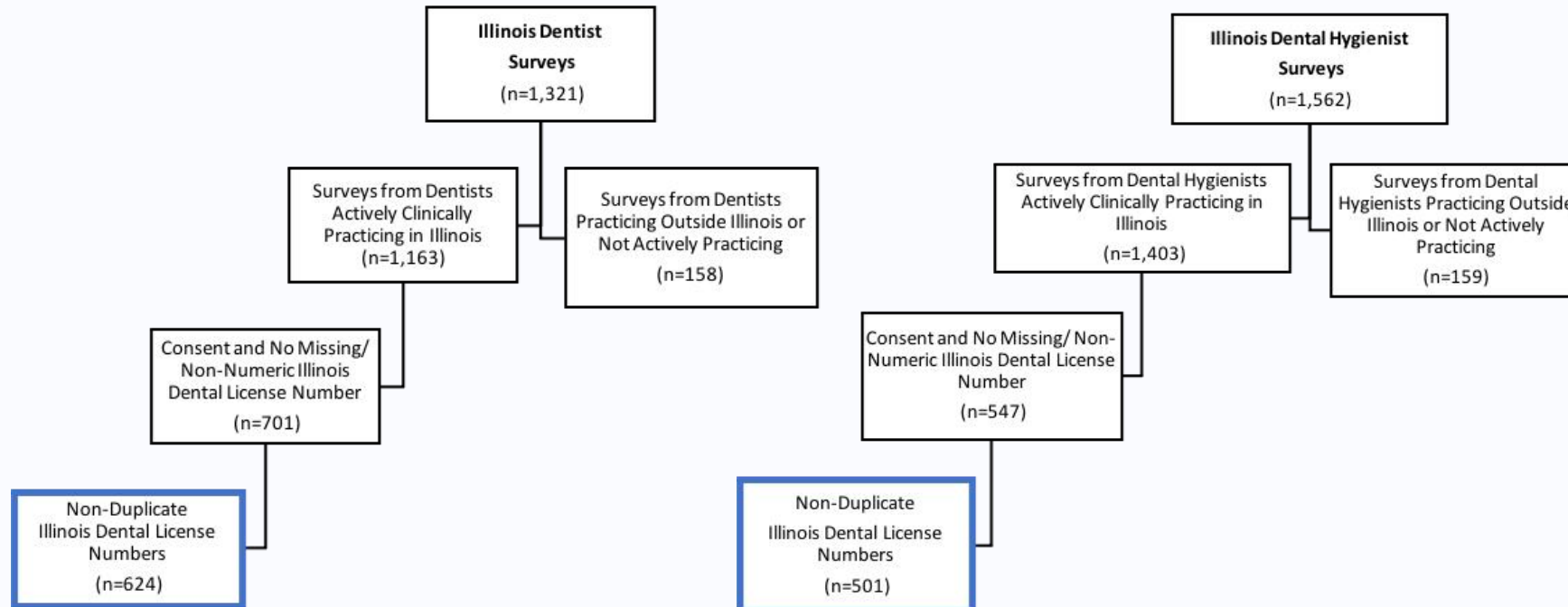
- The number of dentists included were identified using responses to the question of employment type. Individuals selecting "Full-time clinical practice in Illinois," "Part-time clinical practice in Illinois," or providing no response were included in the survey analysis. Surveys received where respondents were identified as actively clinically practicing were excluded if they did not consent to the survey and/or were missing or had non-numeric license numbers. Surveys were also deduplicated according to the state dental license number, with most recently completed survey kept for analysis. If a dental license had duplicates, but the most recent survey completed had missing responses, previously completed survey responses were used to fill in missing responses.



## Methods *(continued)*

- Percentages for each response to a question were calculated by the number of selections of a response/total number of unique dental license numbers responding to that specific question.
- For questions with open-ended response options, individual entries were grouped into common themes and frequencies calculated (e.g., top three concerns for practice, ideal work situation, etc.).
- If a question required a numerical response, but applicants responded with a range of numbers, the median number of the range was selected (e.g., average hours per week worked at practice).

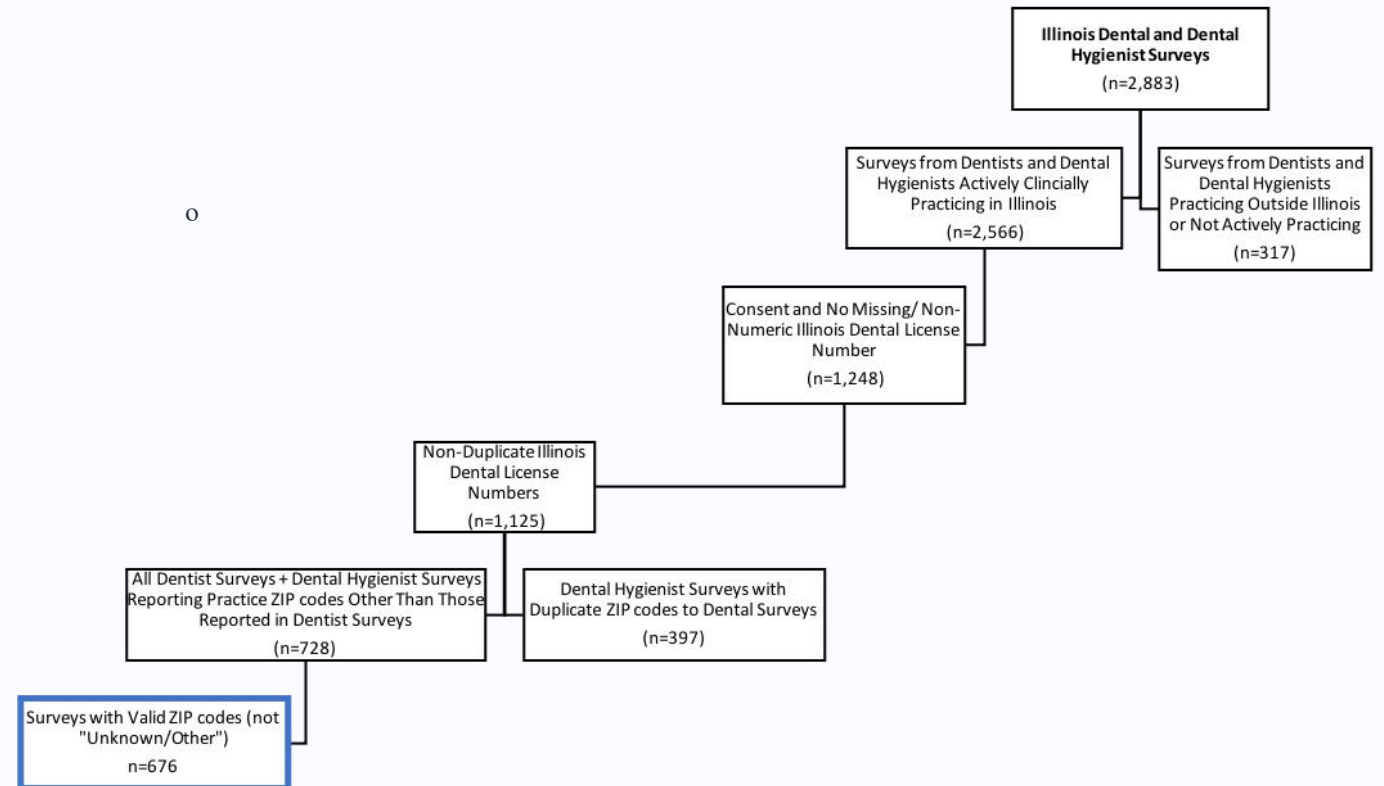
Figure 1: Survey Cleaning and Exclusion Criteria - Provider Characteristics.



## Methods *(continued)*

- For the purposes of this report, only the top 3 – 5 responses were selected for any multi-selection question. Responses with small numbers of responses were not included but can be provided upon request as long as the data remains unidentifiable and in accordance with IDPH data protection policies.
- For the purposes of this report, race was aggregated into four main groups: White (White or Caucasian), Asian (Asian), Black (Black or African American), Hispanic (Hispanic or Latinx), or Other (Prefer not to say, Other, American Indian, Alaskan Native, Multiracial or Biracial, Native Hawaiian, or Pacific Islander).
- For the purposes of this report, dental practice characteristics were determined by including responses with unique ZIP codes. See **Figure 2: Survey Cleaning and Exclusion Criteria – Practice Characteristics**. In instances with duplicate ZIP codes, responses were "pooled" and the average response was calculated and included in the analysis in an effort to control for duplicate responses for a single practice. If responses for a ZIP code were of equal frequency, the response in the minority was favored. For multi-selection questions (e.g., practice activities, barriers, populations), distinct selections for each ZIP code were grouped into frequency across ZIP codes.

Figure 2: Survey Cleaning and Exclusion Criteria - Practice Characteristics.





## *Summary of Results*

### Characteristics of Dentists (Practicing in Illinois)

In 2021/2022, 10,511 dentists renewed their license. Of those, 1,321 completed the oral health workforce survey (response rate = 12.6%). Among the 1,321 who completed the survey, 1,163 (88%) indicated they are currently working in Illinois. The characteristics of dentists clinically practicing in Illinois were as follows:

- Male (60.0%)
- White (74.4%), Asian (12.2%), Other (6.1%), Hispanic (4.0%), Black (3.2%)
- Age Group: 35 - 44 years (19.6%), 55-64 years (29.1%), >65 years (24.1%)
- Average hours/week: 30 - 40 hours (55.6%), 20 - 30 hours (16.6%), 10 - 20 hours (10.1%)
- Specialty: General practice (85.6%), orthodontics (5.1%), pediatric dentistry (3.6%)
- Plan to stop practicing: 1 - 5 years (30.2%), 6 - 10 years (20.2%), 20 or more years (23.4%)

### Characteristics of Dental Practices (Illinois)

- Dental practices were mostly private/group practice (83.4%) and were primarily solo (47.2%) or small group (43.6%).
- Almost all practices provide direct patient care (99.4%), followed by administration (58.1%), and teaching (42.4%).
- More than half of practices (55.8%) indicated use of silver diamine fluoride (SDF).
- Only 22.6% accept Medicaid and 66.6% serve children under the age of 3.

### Characteristics of Dental Hygienists (Practicing in Illinois)

In 2021/2022, 8,497 dental hygienists renewed their license. Of those, 1,562 completed the oral health workforce survey (response rate = 18.4%). Among the 1,562 who completed the survey, 1,403 (89.8%) indicated they are currently working in Illinois. The characteristics of dental hygienists clinically practicing in Illinois were as follows:

- Female (97.6%)
- White (84.5%), Hispanic (6.0%), Other (4.8%), Asian (2.4%), Black (2.2%)
- Age Group: 24 - 34 years (25.1%), 45 - 54 years (23.9%), 55-64 years (25.5%)
- Average hours/week: 30 - 40 hours (50.9%), 20 - 30 hours (16.9%), 10 - 20 hours (12.8%)
- Certification: Public health dental hygienist (PHDH) (10.9%), community dental hygienist certification (CDHC) (4.0%)
- Plans to stop practicing: 1 - 5 years (24.6%), 6 - 10 years (24.6%), 20 or more years (25.1%)

## Illinois Oral Health Workforce Trends (2004 - 2022)

Year – to – year\* comparisons were made to determine if there were any changes in the diversity and practice characteristics among the oral health workforce (see Appendix II):

- Female dentists increased by almost 20% (from 19% in 2004 to 38.7% in 2022); male dental hygienists increased by less than 1% (0.6% in 2006 to 1.4% in 2022).
- Increased representation of Asian, Black, and Hispanic oral health providers was observed between 2004 and 2022 (2.5% average increase).
- The percentage of dentists who work more than 25 hours per week decreased between 2015 and 2022 and increased among dental hygienists in the same time period.
- Plans to stop practicing within 10 years decreased among dentists and dental hygienists between 2015 and 2022.

*\*Comparisons should be used with caution as methods for data collection varied significantly across comparison years.*

Table 1: : Licensure and Provider Ratio to Population Trends (2004 - 2022), Illinois

Year	Number of Total Licenses Renewed		Population Adjusted Dental Provider Ratio	
	Dentists	Dental Hygienists	Dentists	Dental Hygienists
2004	8,575	5,329	1,468:1	2,362:1
2006	9,470	6,689	1,334:1	1,889:1
2015	9,329	7,779	1,378:1	1.653:1
2021/2022*	10,511	8,497	1,205:1	1,491:1

\*Population Estimates, July 1, 2021 (v2021). <https://www.census.gov/quickfacts/IL>

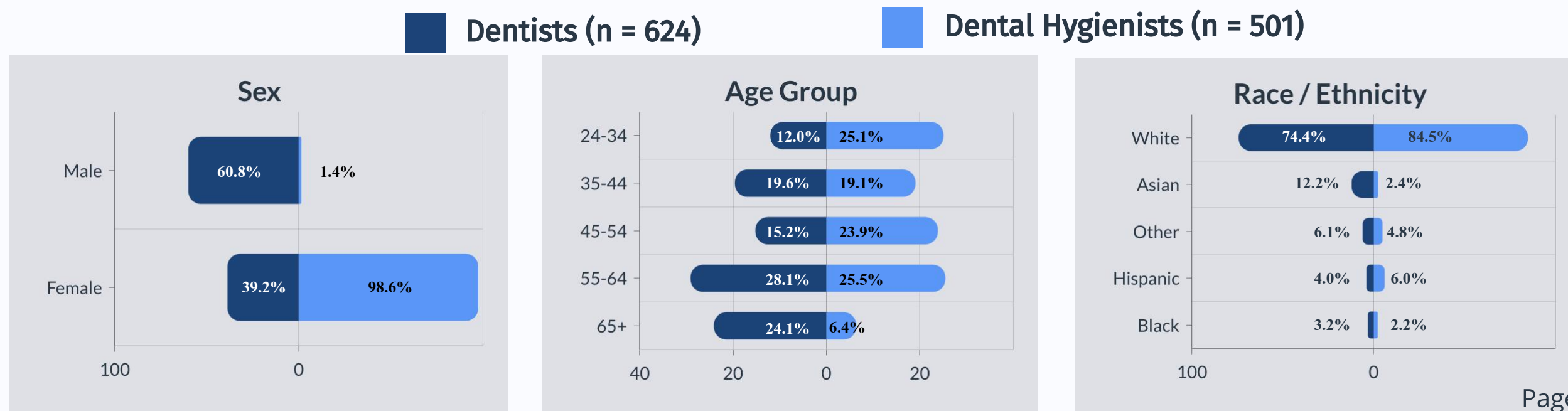


## Workforce Demographics

The majority of dentists were male (60.0%) and over 55 years of age (53.2%); 34.1% plan to stop practicing in less than one year, and 14.4% have a secondary practice site. With regard to COVID-19 support, 54.5% indicated providing vaccine awareness and education, 44.4% indicated providing COVID-19 patient education, and 34.2% indicated providing no COVID-19 support (see Appendix 2). Asian dentists are represented at 2 to 4 times that of Black, Hispanic, or other race / ethnicity groups (see Figure 3: Demographic Characteristics, Dentists vs. Dental hygienists [%]).

Dental hygienists responding to the survey were mostly female (98.6%) and more than 25.5% are older than 55 years of age; 25.1% plan to practice more than 20 years. With regard to COVID-19 support, 45.6% indicated providing vaccine awareness, and 36.6% indicated providing COVID-19 patient education (data not shown). The dental providers and dental hygienists responding to the survey represented a lower proportion of the population for Hispanics and Blacks (see Appendix 2).

**Figure 3: Demographic Characteristics, Dentists vs. Dental Hygienists (%)**

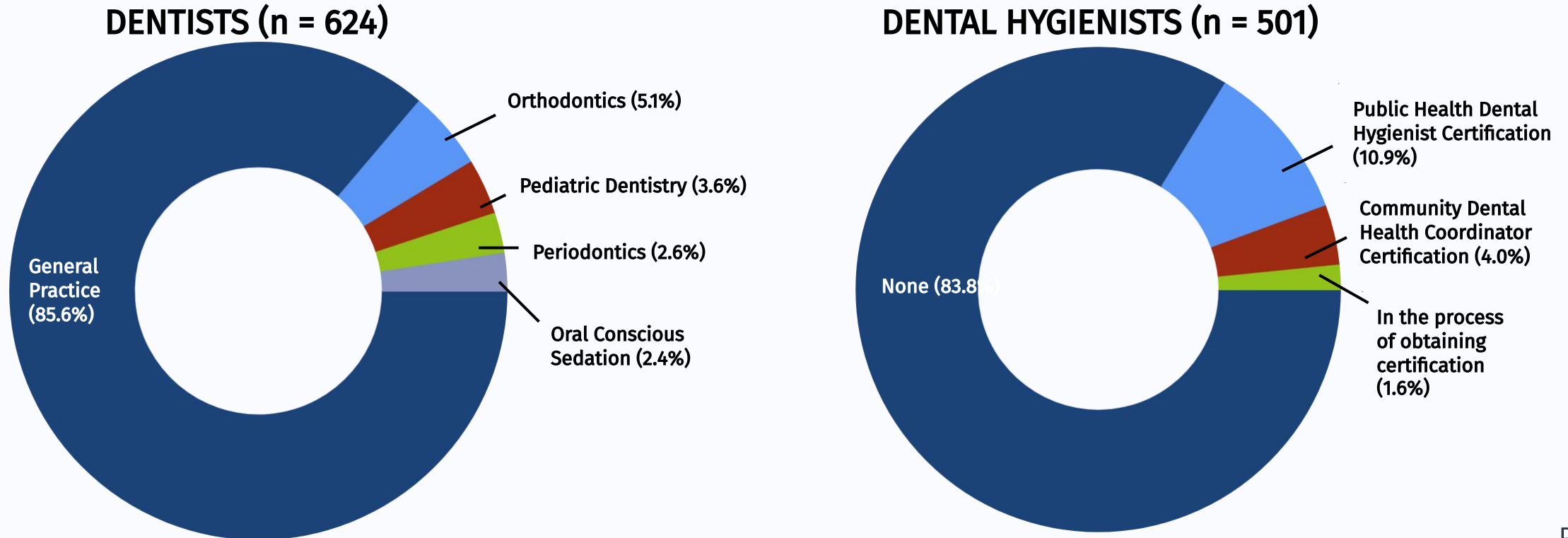




## Specialty Characteristics

The majority of respondents to the dentist survey indicated having a general practice license (85.6%) followed by the following specialties: orthodontics (5.1%), pediatric dentistry (3.6%), periodontics (2.6%), and oral conscious sedation (2.4%) (see Figure 4). Of the respondents completing the dental hygienists survey, 10.9% PHDH certification, 4.0% have a community dental health coordinator (CDHC) certification, and 1.6% indicated not being certified but are in the process of obtaining certification. The majority of dental hygienists indicating having a PHDH certification have had the certification between 1 - 5 years. Similarly, all CDHC certifications have been attained less than five years ago (data not shown).

Figure 4: Dentists and Dental Hygienists, by Specialty / Certification (%)



# Oral Health Workforce Survey Report

**Table 2: Practice Characteristics Across Reported Practice ZIP Codes (n = 361)**

	Number	Percent
<b>Type of Practice (Top 3) (n = 361)</b>		
Private / Group Practice	301	83.4
Other	23	6.4
Federally Qualified Health Center	20	5.5
Health Care Business / Corporation	17	4.7
<b>Size* (n = 360)</b>		
Solo	170	47.2
Small Group	157	43.6
Large Group	33	9.2
<b>Activities (Top 5) (n = 356)</b>		
Patient Care	354	99.4
Administration	207	58.1
Teaching	151	42.4
Community Outreach and Education	84	23.6
Other	11	3.1

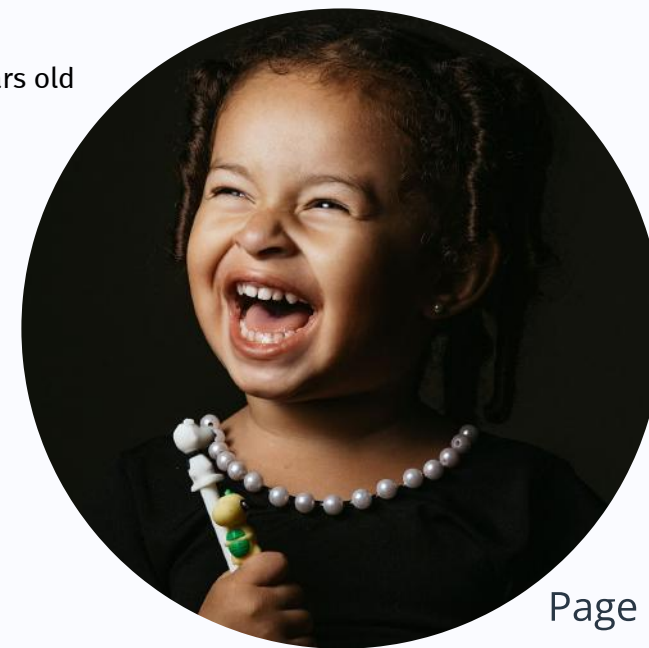
\*Size group refers to practices with 2 - 4 FTEs. Large group refers to 5+ FTEs.

The majority of practices represented in this data set were private / group practice (83.4%), followed by other (6.4%), federally qualified health centers (FQHCs) (5.5%), and health care business /corporation (4.7%). In addition, more than 90% of practices were either solo (47.2%) or small group (43.6%). The top activities performed within dental practices include patient care (99.4%), administration (58.1%), teaching (42.4%), and community outreach and education (23.6%). See Table 1.

Additional practice characteristics include the following (data not shown\*):

- 13.7% of practices with staff vacancies
- 5.5% with a Public Health Collaborative Agreement completed by a dental hygienist
- 55.8% using silver diamine fluoride
- 22.6% accepting Medicaid patients; 71.6% of which indicated accepting NEW Medicaid patients
- 91.9% indicated accepting new adult patients
- 66.6% indicated accepting children under 3 years old

\*Data details available in Appendix II

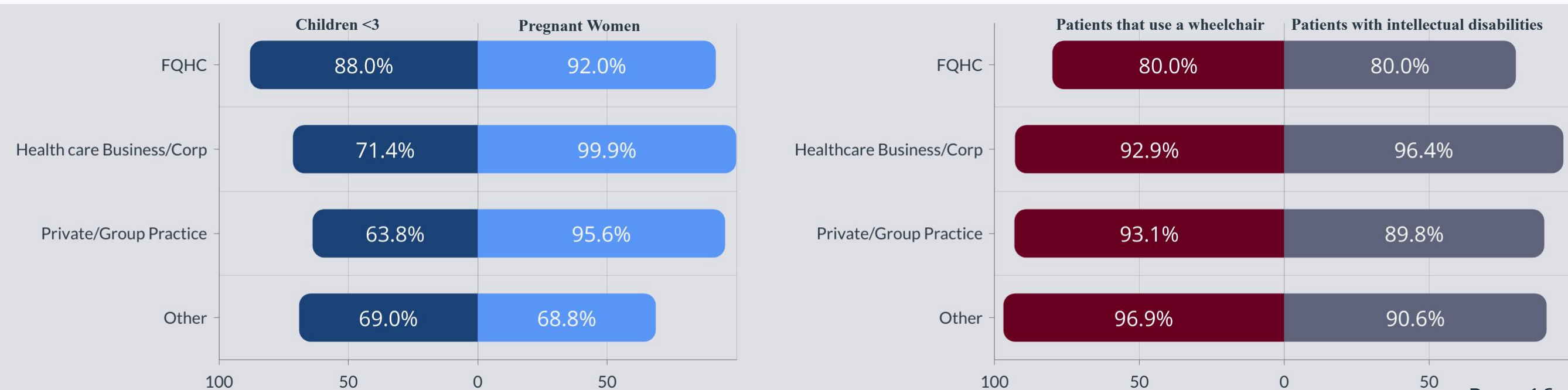


## Practice Characteristics

A higher proportion of FQHCs indicated serving children less than 3 years of age when compared to other site types. A high percentage of sites indicated seeing patients who use a wheelchair, patients with intellectual disabilities, and pregnant women, with the exception of pregnant women by "other" sites (68.8%) and wheelchair bound and individuals with intellectual challenges among FQHC's at 80.0%.

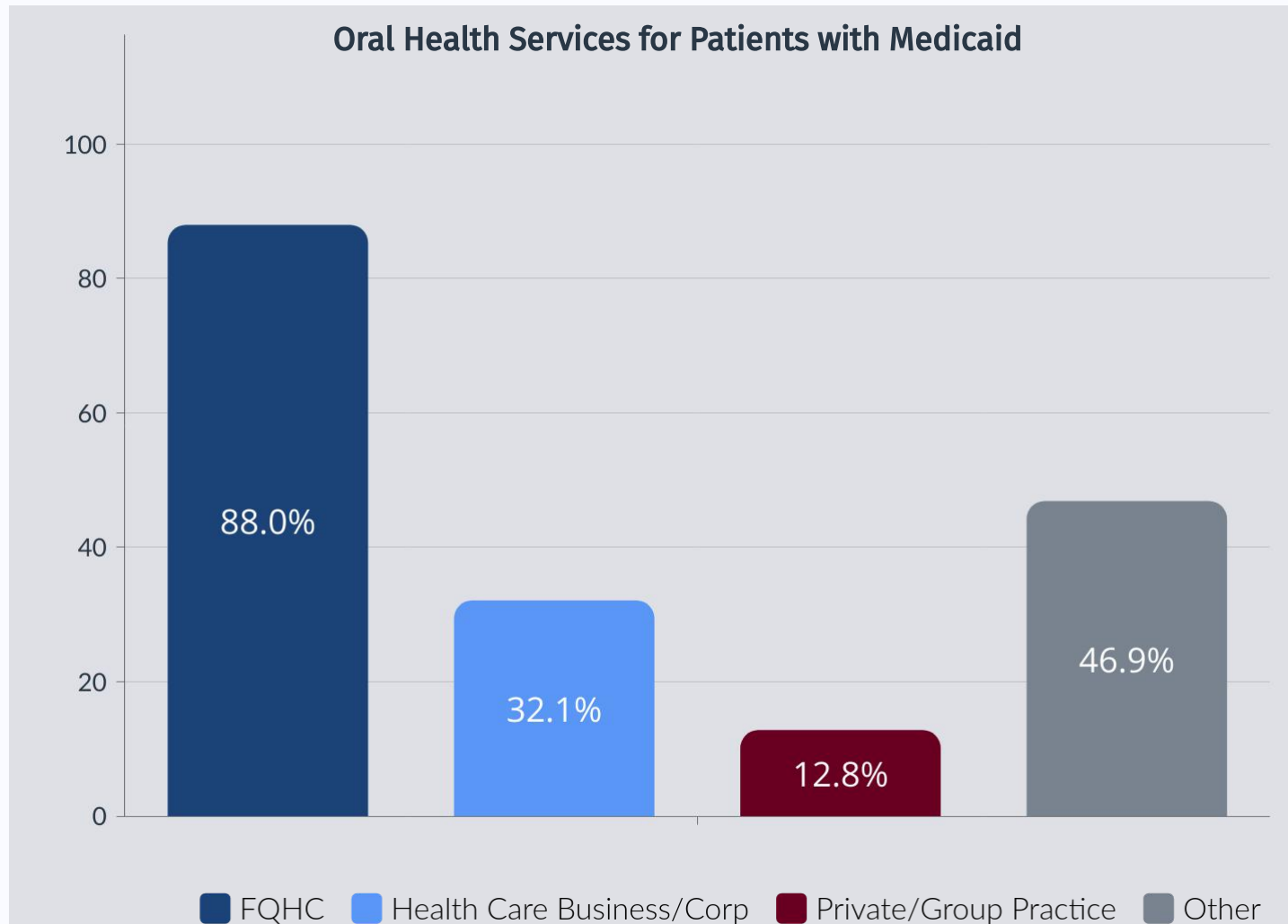
When looking at practice size, a smaller proportion of solo practices indicated serving children less than 3 years of age (59.3%), compared to small group and large group practices, 72.5% and 75.0% respectively. Practices that indicated serving children less than 3 years of age also indicated having a PHDH collaborative agreement in place (data not shown).

**Figure 5: Oral Health Services for Special Populations, by Practice Type (%)**



## Practice Characteristics

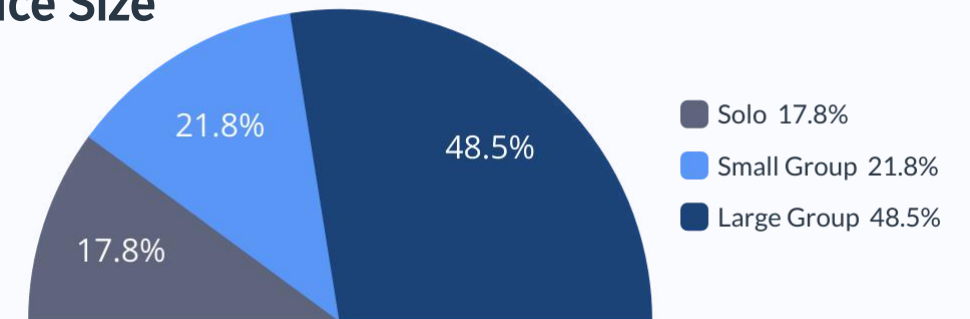
Figure 6: Oral Health Services for Medicaid Populations, by Practice Type and Practice Size (%) (n = 359)



A higher proportion of FQHCs indicated serving Medicaid patients (88.0%), followed by other (46.9%), health care business/corporation (32.1%), and private/group practice (12.8%)\*. A higher proportion of large group practices (5+ FTE dentists) indicated seeing Medicaid patients (48.5%), followed by small group (2 - 4 FTE dentists) (21.8%) and solo practices (17.8%). Additional analysis was conducted among select geographic designations and found Chicago sites serving Medicaid patients was more than double that of rural sites; 41.3% and 20.6%, respectively (**data not shown**).

Overall, the majority of practices accepting Medicaid patients indicated accepting new Medicaid patients (71.6%). The top barriers indicated among Medicaid providers included denial of payment, low reimbursement, and enrollment paperwork. Finally, of practices that indicated they served Medicaid patients, 73.7% have a PHDH collaborative agreement in place (**data not shown**).

### Practice Size

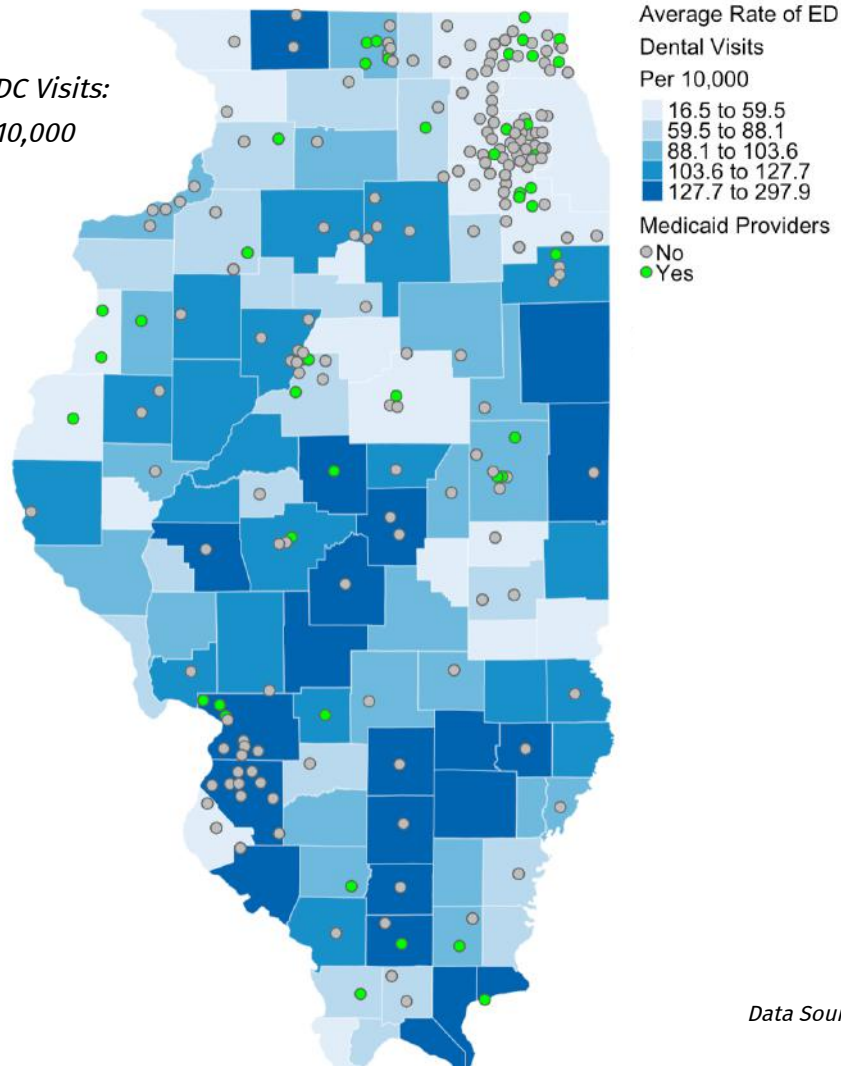


\*For the purposes of this report, the term "FQHC" can include other community health center designations that do not otherwise receive federal funding under section 330 of the PHS Act.

## Medicaid Practice Locations

Figure 7: Non-Traumatic Dental Condition ED Visits, Medicaid vs. Non-Medicaid Practices

Total ED NTDC Visits:  
71.5 per 10,000

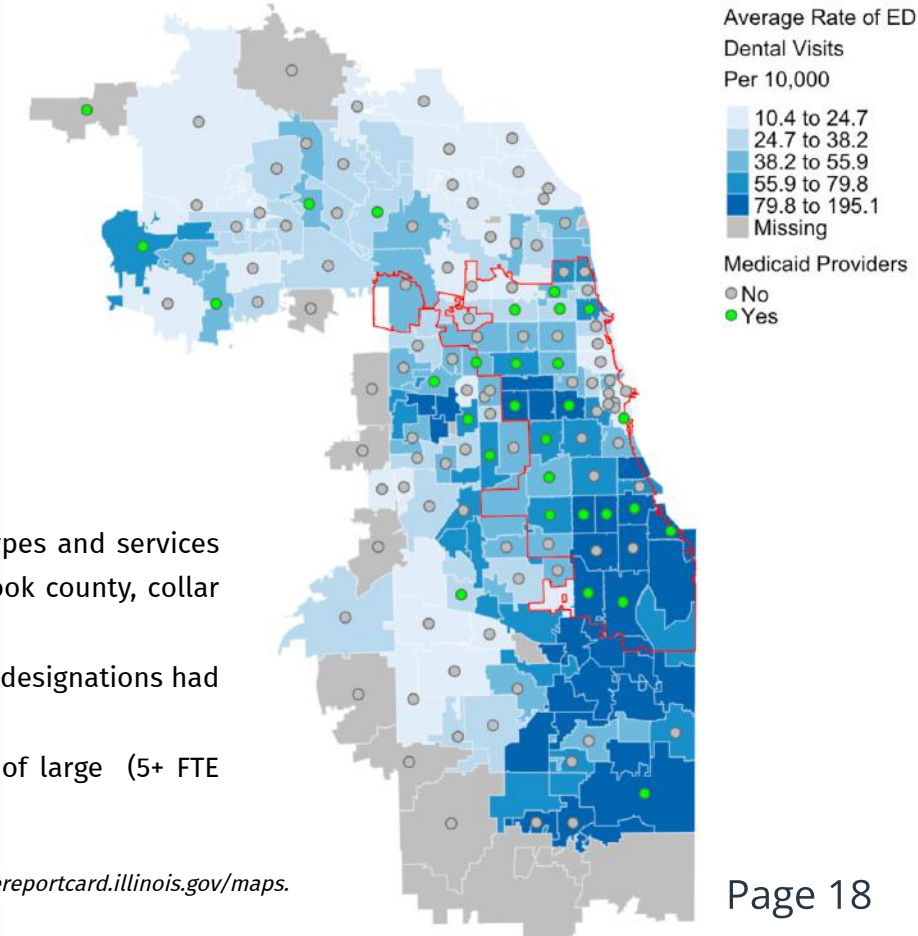


Looking at the average rate of emergency department (ED) dental visits (non-traumatic dental conditions) in parallel to the location of dental sites, as well as sites that take Medicaid patients, can provide insights with regard to sufficient access and/or coverage for vulnerable populations. Although not all dental sites are included, there are some interesting observations with regard to areas of high ED NTDCs and lack of providers that serve Medicaid patient. These instances are most notable in Cook County where areas with a higher number of dental sites that serve Medicaid patients also have a lower average rate of ED dental visits.

Additional analysis was conducted to look at practice types and services delivered by select geographic designations (Chicago, Cook county, collar counties, urban, and rural) areas: (see Appendix II)

- Chicago had the highest proportion of FQHCs; all other designations had 80% or more private / group practices.
- Cook and collar counties had the highest proportion of large (5+ FTE dentists); 13.6% and 12.0% respectively.

### Illinois: Cook County Only



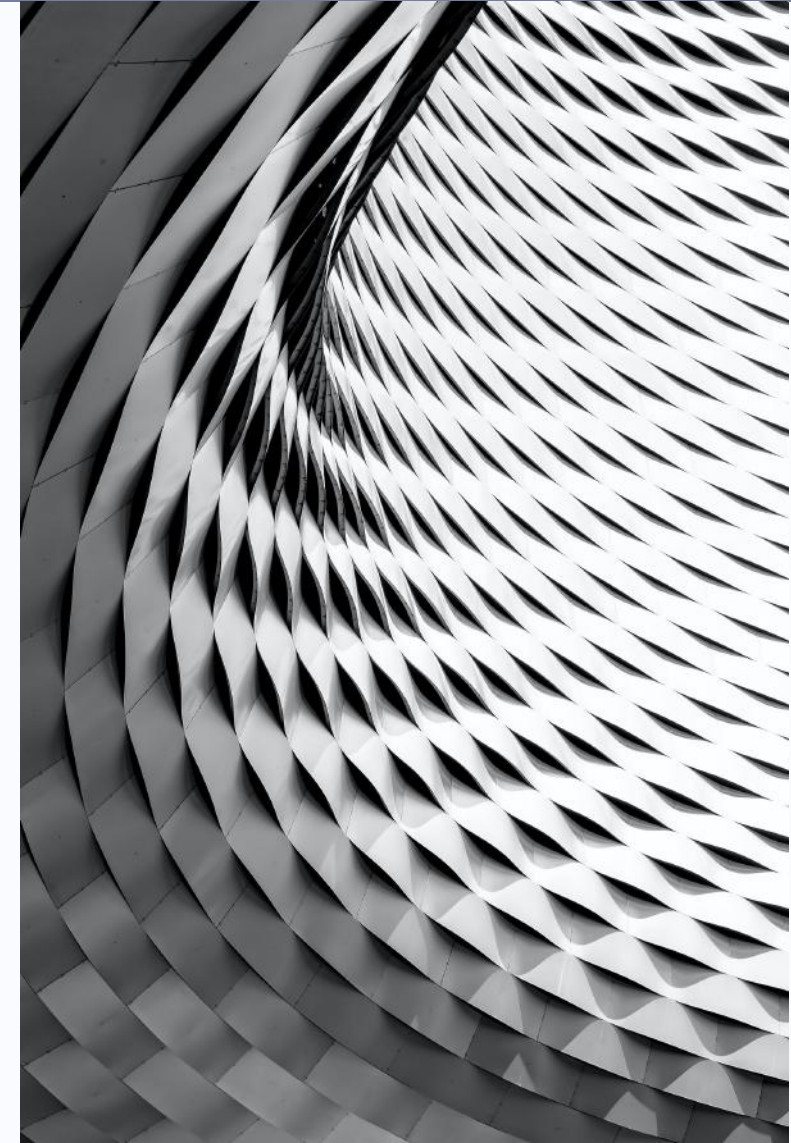


## Limitations

The nature of this project lends itself to a couple specific limitations:

- The data does not represent all licensed dentists and dental hygienists in Illinois.
- Data in the report are subject to limitations associated with the self-reporting of workforce characteristics.
- The survey was sent to dentists and dental hygienists who are active within the oral health workforce and whose licenses were renewed between September 2021 - April 2022.
- Responses were voluntary, which may have impacted the total response rate.
- The time-period for taking the survey was in constant flux due to delays in the license renewal window which also may have reduced the number of survey responses received.
- FQHC site type selected by survey recipients can be inclusive of other community health centers that do not receive federal funding.\* For purposes of this report, any outputs that indicated less than 100% Medicaid coverage by FQHCs are likely a site type that does not received a federal award.

*All FQHCs in Illinois (that receive a federal award) must assure that any fees or payments required by the Health Resources and Services Administration Center for Health Care Services will be reduced or waived in order to assure that not patient will be denied such services due to an individuals inability to pay for such services. <https://bphc.hrsa.gov/compliance/compliance-manual/introduction>*





# Oral Health Workforce Survey Report

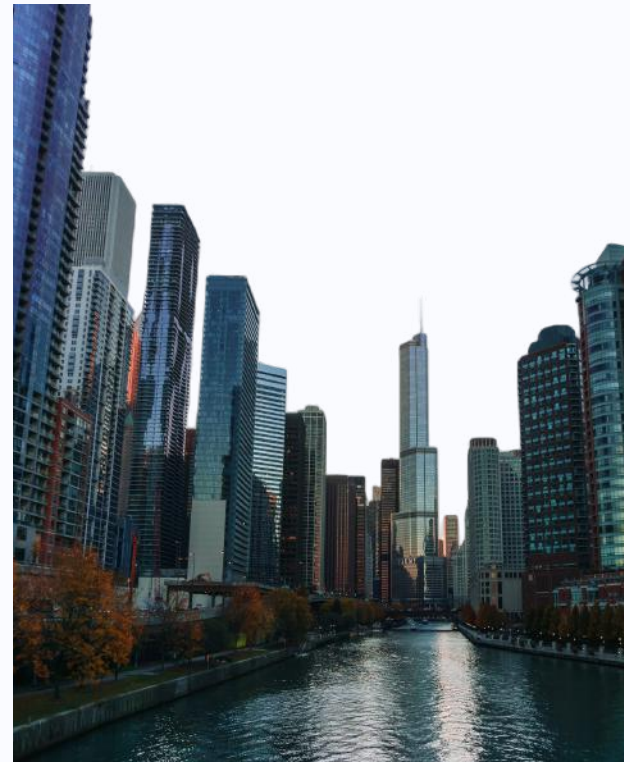
## Conclusion and Future Considerations

Between 2004 – 2022, there have been modest improvements in minority group representation within the oral health workforce in Illinois. Still, Illinois trends among racial and ethnic diversity follow national trends that indicate all minority groups, except Asians are underrepresented in health diagnosis and treating (dentists) and health technologists and technicians (dental hygienists) occupations. (7) The Gender diversity has increased substantially among dentists, the percentage of female dentists increased in Illinois (from 19% in 2004 to 38.7% in 2022).

The Illinois Oral Health Workforce Survey revealed a slightly lower proportion of general versus specialty dentists (approximately 6% less) compared to national trends, but it is in line with the proportion of pediatric dentists. (8) Oral health services provided to vulnerable populations continue to be a challenge as less than 1 in 4 Illinois sites indicated accepting Medicaid patients and 2 in 3 sites indicted serving children under the age of 3. Not surprisingly, a higher proportion of FQHCs indicated serving Medicaid, pregnant patients, and children under the age of 3 compared to other practice site types. Shortages in rural areas continue to be significant challenge nationally and in Illinois.

Although the oral health workforce in Illinois is increasing, responses from the 2021/2022 Illinois Oral Health Workforce Survey indicate a need to improve to keep up with the demand of the growing population. There continues to be a need for multi-pronged recruitment strategies, expanded training and pipeline programs, as well as incentives in oral health practice settings.

The IDPH Oral Health Section should assess the oral health workforce in a way that enables a representative and comprehensive understanding of the workforce, areas of workforce shortages, and provider capacities to further support strategic program planning to meet future demands in oral health across Illinois.



---

# **APPENDIX I:**

## **ORAL HEALTH WORKFORCE SURVEYS**

### **DENTISTS AND DENTAL HYGIENISTS**

---

## **Confidential**

### **Oral Health Workforce Survey [for Dentists and Dental Hygienists]**

The Illinois Department of Public Health's mission is to protect the health and wellness of the people of Illinois through the prevention, health promotion, regulation, and the control of disease and injury. Essential public health services provided or assured by IDPH include (1) assessing and monitoring population health status, factors that influence health, and community needs and assets as well as building and supporting diverse and skilled public health workforce; (2) assuring an effective system that enables equitable access to the individual services and care needed to be healthy; and (3) strengthening, supporting, and mobilizing communities and partnerships to improve health.

Assessing and addressing oral health workforce supply, distribution, and training needs as well as working to assure equitable access to individual oral health services in collaboration with partners are important components of these essential public health services. The U.S. Department of Health and Human Services (DHHS) Health Resources and Services Administration (HRSA) has provided funding to IDPH to conduct an assessment of Illinois oral health workforce during the 2021 license renewal period. The assessment will assist IDPH and the state in gaining a better understanding of the oral health workforce, workforce shortages, and capacities in Illinois. The information gathered from the assessment will be used to expand the capacity of the oral health workforce through training, innovation, and other strategies that improve health and wellness.

#### ***Informed Consent Statement***

IDPH requests your participation in a confidential survey that will be used to assess the oral health workforce in Illinois. Input into this survey was provided by Illinois Department of Financial and Professional Regulation, Illinois State Dental Society, Illinois Dental Hygienists Association, academic institutions, and other IDPH partners. The information and personal identifiers you share will be kept confidential to the full extent of the law. All data collected herein is for the sole purpose of evaluation and monitoring of oral health workforce and oral health programs in Illinois. Survey data will not be used for any other purpose, in whole or in part, without the express written consent of the individual respondent.

Individual names are not collected in this survey. However, the Illinois license number is collected and will only be used to de-duplicate responses (as necessary). Data will be collected using REDCap™, a secure web application that is in compliance with 21 CFR Part 11, Federal Information Security Modernization Act (FISMA), Health Insurance Portability and Accountability Act, and General Data Protection Regulation (GDPR). The information you provide will be aggregated and reported in summary form so that no individual will be identifiable in any report. Data will be suppressed in accordance with IDPH policy to ensure no individual practices are identifiable. IDPH is the only organization that will have access to the raw data captured throughout this survey process.

Participation or nonparticipation in the survey is voluntary and will not impact your relationship with society memberships or state licensing boards. Submission of this page will

be interpreted as your informed consent to participate and that you affirm you are at least 18 years of age.

If you have questions about this survey or any of the information being requested, contact the principal investigator, Dr. Mona Van Kanegan, chief, Division of Oral Health, IDPH, via email at [Mona.VanKanegan@illinois.gov](mailto:Mona.VanKanegan@illinois.gov). If you have questions regarding your rights as a survey participant, contact the Illinois Department of Public Health Division of Oral Health at [DPH.oralhealth@Illinois.gov](mailto:DPH.oralhealth@Illinois.gov).

**This study will take approximately 15 minutes to complete.** You may decline to take part in the survey or exit the survey at any time without any consequences. You may skip any question you do not wish to answer for any reason.

You may choose to decline to answer any of the questions. If you discontinue taking the survey before you have completed it, you will not be able to retrieve your responses or be able to complete the survey. We encourage all respondents to set aside time to enable completion of the survey, to completion, in one session.

ELECTRONIC CONSENT: Please select your choice below. Clicking on the “Agree” button indicates that

- You have read the above information
- You voluntarily agree to participate
- You are 18 years of age or older

Agree  Disagree

***\*Feel free to print or save a copy of this form for your personal records\****



DENTISTS SURVEY

Thank you for consenting to participate in this survey. You may begin the following section:

WORKFORCE DEMOGRAPHICS

- 1. Please select your current license type (check all that apply).
  - General Dentistry
  - Specialty in Dentistry
  - Dentist Temporary
  - Dental Teaching Permit
  - Dental Sedation Permit
  - Controlled Substance
  - Dental Residency/Intern Permit

---

- 2. Please provide your IL dental license number: \_\_\_\_\_

---

- 3. Please indicate your current Dental Practice/Specialty and Board Certification or Permits (check all that apply)
  - General Practice
  - Prosthodontics
  - Oral and Maxiofacial Surgery
  - Oral and Maxiofacial Pathology
  - Endodontics
  - Dental Public Health
  - Orthodontics
  - Oral Radiology
  - Pediatric Dentistry
  - Periodontics
  - Dental General Anesthesiology
  - Oral Conscious Sedation
  - Conscious Sedation
  - Influenza vaccine certification
  - Other (please specify)

---

- 3a. If "Other", please specify: \_\_\_\_\_

---

- 4. Please indicate degree(s) obtained (check all that apply):
  - DDS / DMD
  - MS
  - PhD
  - DrPH
  - Other (please specify)

---

- 4a. If "Other", please specify: \_\_\_\_\_

---

- 5. Please select your current age group.
  - 24 - 29
  - 30 - 34
  - 35-39
  - 40-44
  - 45-49
  - 50-54
  - 55-59
  - 60-64
  - 65-69
  - ≥70 years of age

---

- 6. What gender do you identify as?
  - Male
  - Female
  - Non-binary / third gender
  - Prefer not to say

- 
7. Please select your Race/Ethnicity
- White or Caucasian
  - Black or African American
  - Asian
  - Native Hawaiian or Pacific Islander
  - American Indian or Alaskan Native
  - Hispanic or Latinx
  - Multiracial or Biracial
  - Other
  - Prefer not to say

- 
- 7a. Please specify further:
- Chinese
  - Indian
  - Japanese
  - Korean
  - Vietnamese
  - Other

- 
- 7b. Please specify further:
- Filipino
  - Samoan
  - Other

- 
- 7c. Please specify further:
- Puerto Rican
  - Cuban
  - Mexican
  - Other Hispanic Descent

- 
- 7d. If "Other", please specify:
- \_\_\_\_\_

- 
8. What is your current employment status (check all that apply)
- Full-time clinical practice in IL
  - Full-time clinical outside IL
  - Part-time clinical practice in IL
  - Part-time clinical practice outside IL
  - Part-time Administrative/Faculty (No Direct Patient Care)
  - Full-time Administrative/Faculty (No Direct Patient Care)
  - Other employment status (e.g., Volunteer)
  - Fully Retired (Not Working)

- 
- 8a. If you selected "Other employment status", please specify:
- \_\_\_\_\_

8b. Please indicate which state (pick list of state abbreviations)

- Alabama - AL
- Alaska - AK
- Arizona - AZ
- Arkansas - AR
- California - CA
- Colorado - CO
- Connecticut - CT
- Delaware - DE
- Florida - FL
- Georgia - GA
- Hawaii - HI
- Idaho - ID
- Illinois - IL
- Indiana - IN
- Iowa - IA
- Kansas - KS
- Kentucky - KY
- Louisiana - LA
- Maine - ME
- Maryland - MD
- Massachusetts - MA
- Michigan - MI
- Minnesota - MN
- Mississippi - MS
- Missouri - MO
- Montana - MT
- Nebraska - NE
- Nevada - NV
- New Hampshire - NH
- New Jersey - NJ
- New Mexico - NM
- New York - NY
- North Carolina - NC
- North Dakota - ND
- Ohio - OH
- Oklahoma - OK
- Oregon - OR
- Pennsylvania - PA
- Rhode Island - RI
- South Carolina - SC
- South Dakota - SD
- Tennessee - TN
- Texas - TX
- Utah - UT
- Vermont - VT
- Virginia - VA
- Washington - WA
- West Virginia - WV
- Wisconsin - WI
- Wyoming - WY

---

8c. Please indicate which state (pick list of state abbreviations)

- Alabama - AL
- Alaska - AK
- Arizona - AZ
- Arkansas - AR
- California - CA
- Colorado - CO
- Connecticut - CT
- Delaware - DE
- Florida - FL
- Georgia - GA
- Hawaii - HI
- Idaho - ID
- Illinois - IL
- Indiana - IN
- Iowa - IA
- Kansas - KS
- Kentucky - KY
- Louisiana - LA
- Maine - ME
- Maryland - MD
- Massachusetts - MA
- Michigan - MI
- Minnesota - MN
- Mississippi - MS
- Missouri - MO
- Montana - MT
- Nebraska - NE
- Nevada - NV
- New Hampshire - NH
- New Jersey - NJ
- New Mexico - NM
- New York - NY
- North Carolina - NC
- North Dakota - ND
- Ohio - OH
- Oklahoma - OK
- Oregon - OR
- Pennsylvania - PA
- Rhode Island - RI
- South Carolina - SC
- South Dakota - SD
- Tennessee - TN
- Texas - TX
- Utah - UT
- Vermont - VT
- Virginia - VA
- Washington - WA
- West Virginia - WV
- Wisconsin - WI
- Wyoming - WY

---

9. Specify the number of years you plan to remain active within the Oral Health Workforce (i.e. years to retirement)

- < 1 year
- 1 - 5 years
- 6 - 10 years
- 11 - 15 years
- 16 - 20 years
- >20 years
- Other (please specify)

---

9a. If "Other", please specify:

---

**LANGUAGE NEEDS**

10. Are the basic language needs\* of your patients being met during the healthcare encounter?  Yes  
 No  
 N/A  
\*Basic language needs means that verbal and / or written communication are provided during the encounter to support the language needs of the individual patient.

10a. If Yes, please indicate what resources/services are being used to meet the language needs of your patients. (select all that apply)  
 Printed materials  
 Interpreter services (on-site)  
 Interpreter services (off-site)  
 Teletypewriter (TTY) services  
 Electronic materials  
 Other  
 None

10ai. If "Other", please specify:  
\_\_\_\_\_

10b. Please describe (in as much detail as possible) the types of translation/interpreter services currently utilized to meet patient language needs.  
\_\_\_\_\_

11. Please indicate which languages are a challenge in the healthcare communication with your patient(s)? (select all that apply)  
 English  
 Spanish  
 French  
 German  
 Russian  
 Polish  
 Tagalog  
 Japanese  
 Chinese  
 Vietnamese  
 Korean  
 American Sign Language  
 Other (please specify)

11a. Please specify if you selected other:  
\_\_\_\_\_



**PRACTICE LOCATION & SERVICE FOR PRIMARY LOCATION**

12. Please provide information for your primary practice location: Practice Type
- Private Practice/Group Practice
  - Healthcare Business/Corporation
  - Academic Setting/Teaching
  - State/Local Government
  - VA or Hospital Clinic
  - Nursing Home/Assisted Living
  - Federally Qualified Health Center/Not for Profit
  - Volunteer Clinic
  - School-based Health Clinic (elementary or high school)
  - Mobile Provider (bring equipment to set-up in high school, grammar school, daycare, etc.).
  - Other (please specify)

12a. If "Other", please specify: \_\_\_\_\_

13. Please provide information for your primary practice location: Practice Size
- Solo
  - Small group (2-4 FTE dentists)
  - Large group (5+ FTE dentists)
- (Note: 1 Full Time Equivalent (FTE) = 32 clinical hours)

14. Please provide information for your primary practice location: Location (Zip Code Only) \_\_\_\_\_

15. Please provide information for your primary practice location: Average hours per week \_\_\_\_\_

16. Please provide information for your primary practice location: Indicate if your practice has any clinical staff vacancies (full-time equivalent positions)
- Yes
  - No

16a. Please indicate the number of DENTIST vacancies (full-time equivalent positions): \_\_\_\_\_

(Note: 1 Full Time Equivalent (FTE) = 32 clinical hours)

16b. Please indicate the number of DENTAL HYGIENIST vacancies (full-time equivalent positions): \_\_\_\_\_

(Note: 1 Full Time Equivalent (FTE) = 32 clinical hours)

16c. Please indicate the number of DENTAL ASSISTANT vacancies (full-time equivalent positions): \_\_\_\_\_

(Note: 1 Full Time Equivalent (FTE) = 32 clinical hours)

17. Please provide information for your primary practice location: Is Medicaid accepted at this location?
- Yes
  - No

---

17a. If Yes, are you accepting NEW Medicaid patients?  Yes  
 No  
 Not sure

---

18. Please provide information for your primary practice location: Please indicate the barriers you encounter around Medicaid participation. (check all that apply)

- Enrollment Paperwork
- Need for Prior Approval
- Frequent Changes in Regulation
- Denial of Payment
- Slow Reimbursement
- On-and-off Eligibility of Patients
- Patient Characteristics
- Difficulty in Finding Specialists Who Accept Medicaid
- Low Reimbursement
- Other (please specify)
- None

---

18a. If "Other", please specify:

---

---

19. Please provide information for your primary practice location: In your practice do you care for children less than 3 years of age?  Yes  
 No  
 N/A

---

20. Please provide information for your primary practice location: In your practice do you provide dental care to any of the following populations (check all that apply)

- Patients with intellectual or developmental challenges
- New Pediatric patients
- Wheelchair-bound
- Pregnant Patients
- Other special population(s)
- None

---

20a. If "Other special population(s)", please specify:

---

---

21. Please provide information for your primary practice location: In your practice do you use silver diamine fluoride?  Yes  
 No  
 N/A

---

22. Are there public health dental hygienists in your practice working under a collaborative agreement in your practice?  Yes  
 No  
 N/A

**PRACTICE LOCATION & SERVICES FOR SECONDARY LOCATION**

23. Do you have a secondary practice location?  Yes  No

23a. Please provide information for your secondary practice location: Practice Type  Private Practice/Group Practice  Healthcare Business/Corporation  Academic Setting/Teaching  State/Local Government  VA or Hospital Clinic  Nursing Home/Assisted Living  Federally Qualified Health Center/Not for Profit  Volunteer Clinic  School-based Health Clinic (elementary or high school)  Mobile Provider (bring equipment to set-up in high school, grammar school, daycare, etc.).  Other (please specify)

23ai. If "Other", please specify: \_\_\_\_\_

23b. Please provide information for your secondary practice location: Practice Size  Solo  Small group (2-4 FTE dentists)  Large group (5+ FTE dentists)  
(Note: 1 Full Time Equivalent (FTE) = 32 clinical hours)

23c. Please provide information for your secondary practice location: Location (Zip Code Only) \_\_\_\_\_

23d. Please provide information for your secondary practice location: Average hours per week \_\_\_\_\_

23e. Please provide information for your secondary practice location: Indicate if your practice has any clinical staff vacancies (full-time equivalent positions)  Yes  No

23ei. Please indicate the number of DENTIST vacancies (full-time equivalent positions): \_\_\_\_\_  
(Note: 1 Full Time Equivalent (FTE) = 32 clinical hours)

23eii. Please indicate the number of DENTAL HYGIENIST vacancies (full-time equivalent positions): \_\_\_\_\_  
(Note: 1 Full Time Equivalent (FTE) = 32 clinical hours)

23eiii. Please indicate the number of DENTAL ASSISTANT vacancies (full-time equivalent positions): \_\_\_\_\_  
(Note: 1 Full Time Equivalent (FTE) = 32 clinical hours)

---

23f. Please provide information for your secondary practice location: Is Medicaid accepted at this location?  Yes  
 No

---

23fi. If Yes, are you accepting NEW Medicaid patients?  Yes  
 No  
 Not sure

---

23g. Please provide information for your secondary practice location: Please indicate the barriers you encounter around Medicaid participation. (check all that apply)

- Enrollment Paperwork
- Need for Prior Approval
- Frequent Changes in Regulation
- Denial of Payment
- Slow Reimbursement
- On-and-off Eligibility of Patients
- Patient Characteristics
- Difficulty in Finding Specialists Who Accept Medicaid
- Low Reimbursement
- Other (please specify)
- None

---

23gi. If "Other", please specify:

---

23h. Please provide information for your secondary practice location: In your practice do you care for children less than 3 years of age?  Yes  
 No  
 N/A

---

22i. Please provide information for your secondary practice location: In your practice do you provide dental care to any of the following populations: (check all that apply)

- Patients with intellectual or developmental challenges
- New Pediatric patients
- Wheelchair-bound
- Pregnant Patients
- Other special population(s)
- None

---

23ii. If "Other special population(s)", please specify:

---

23j. Please provide information for your secondary practice location: In your practice do you use silver diamine fluoride?  Yes  
 No  
 N/A

---

23k. Are there public health dental hygienists in your practice working under a collaborative agreement?  Yes  
 No  
 N/A

---

**EXPANDED PRACTICE, SUPPORTS AND BARRIERS**

24. Please indicate all activities you conduct in a typical week (check all that apply)
- Patient care
  - Teaching
  - Administration
  - Community Outreach & Community Education
  - Other (please specify)

24a. If "Other", please specify:

---

25. Please indicate your ideal work situation:
- Want to work less
  - Want to work more
  - Working the amount wanted

25a. If more or less, please describe the barriers you've encountered to attaining your ideal work situation:

---

26. Are you currently accepting new adult patients?
- Yes
  - No
  - N/A

26a. If no, please explain the reasons for not being able to accept new patients.

---

27. Please indicate COVID vaccine support you have provided within the past 12 months: (check all that apply)
- Administered COVID-19 vaccine outside of my practice as a volunteer
  - Provided COVID-19 patient education
  - Provided vaccine awareness and education
  - Planning on administering the COVID-19 vaccine in my practice
  - Other (please specify)
  - None

27a. If "Other", please specify:

---

28. What are the top three most significant concerns for your practice? Please number and describe them in the box below (e.g., 1. Lack of oral health education resources).

---



Thank you for consenting to participate in this survey. You may begin the following section:  
**WORKFORCE DEMOGRAPHICS**

- 1. Please provide your IL license number: \_\_\_\_\_
- 2. Did you complete your dental hygiene education in IL?  Yes  No
- 3. Please list the specific school/program \_\_\_\_\_
- 4. Please indicate degree(s) obtained (check all that apply)
  - Associates Degree
  - Bachelors Degree
  - Masters Degree
  - PhD
  - Other
- 4a. If "Other", please specify: \_\_\_\_\_
- 5. Do you have a public health dental hygienist certification?  Yes  No  No but in the process of obtaining
- 5a. If Yes, please indicate how many years you have maintained a public health hygienist certification: \_\_\_\_\_
- 6. Do you have a Community Dental Health Coordinator (CDHC) Certification?  Yes  No  No but in the process of obtaining
- 6a. If Yes, please indicate how many years you have maintained a CDHC Certification: \_\_\_\_\_
- 7. Are there public health dental hygienists in your practice working under a collaborative agreement?  Yes  No  N/A
- 8. Please select your current age group.
  - 24 - 29
  - 30 - 34
  - 35-39
  - 40-44
  - 45-49
  - 50-54
  - 55-59
  - 60-64
  - 65-69
  - ≥70 years of age
- 9. What gender do you identify as?  Male  Female  Non-binary / third gender  Prefer not to say

- 
10. Please select your Race/Ethnicity (check all that apply)
- White or Caucasian
  - Black or African American
  - Asian
  - Native Hawaiian or Pacific Islander
  - American Indian or Alaskan Native
  - Hispanic or Latinx
  - Multiracial or Biracial
  - Other
  - Prefer not to say

- 
- 10a. Please specify further:
- Chinese
  - Indian
  - Japanese
  - Korean
  - Vietnamese
  - Other

- 
- 10b. Please specify further:
- Filipino
  - Samoan
  - Other

- 
- 10c. Please specify further:
- Puerto Rican
  - Cuban
  - Mexican
  - Other Hispanic Descent

---

10d. If "Other", please specify: \_\_\_\_\_

- 
11. What is your current employment status (check all that apply):
- Full-time clinical practice in IL
  - Full-time clinical outside IL
  - Part-time clinical practice in IL
  - Part-time clinical practice outside IL
  - Part-time Administrative/Faculty (No Direct Patient Care)
  - Full-time Administrative/Faculty (No Direct Patient Care)
  - Other employment status (e.g., Volunteer)
  - Fully Retired (Not Working)

11a. Please indicate which state (pick list of state abbreviations)

- Alabama - AL
- Alaska - AK
- Arizona - AZ
- Arkansas - AR
- California - CA
- Colorado - CO
- Connecticut - CT
- Delaware - DE
- Florida - FL
- Georgia - GA
- Hawaii - HI
- Idaho - ID
- Illinois - IL
- Indiana - IN
- Iowa - IA
- Kansas - KS
- Kentucky - KY
- Louisiana - LA
- Maine - ME
- Maryland - MD
- Massachusetts - MA
- Michigan - MI
- Minnesota - MN
- Mississippi - MS
- Missouri - MO
- Montana - MT
- Nebraska - NE
- Nevada - NV
- New Hampshire - NH
- New Jersey - NJ
- New Mexico - NM
- New York - NY
- North Carolina - NC
- North Dakota - ND
- Ohio - OH
- Oklahoma - OK
- Oregon - OR
- Pennsylvania - PA
- Rhode Island - RI
- South Carolina - SC
- South Dakota - SD
- Tennessee - TN
- Texas - TX
- Utah - UT
- Vermont - VT
- Virginia - VA
- Washington - WA
- West Virginia - WV
- Wisconsin - WI
- Wyoming - WY

11b. Please indicate which state (pick list of state abbreviations)

- Alabama - AL
- Alaska - AK
- Arizona - AZ
- Arkansas - AR
- California - CA
- Colorado - CO
- Connecticut - CT
- Delaware - DE
- Florida - FL
- Georgia - GA
- Hawaii - HI
- Idaho - ID
- Illinois - IL
- Indiana - IN
- Iowa - IA
- Kansas - KS
- Kentucky - KY
- Louisiana - LA
- Maine - ME
- Maryland - MD
- Massachusetts - MA
- Michigan - MI
- Minnesota - MN
- Mississippi - MS
- Missouri - MO
- Montana - MT
- Nebraska - NE
- Nevada - NV
- New Hampshire - NH
- New Jersey - NJ
- New Mexico - NM
- New York - NY
- North Carolina - NC
- North Dakota - ND
- Ohio - OH
- Oklahoma - OK
- Oregon - OR
- Pennsylvania - PA
- Rhode Island - RI
- South Carolina - SC
- South Dakota - SD
- Tennessee - TN
- Texas - TX
- Utah - UT
- Vermont - VT
- Virginia - VA
- Washington - WA
- West Virginia - WV
- Wisconsin - WI
- Wyoming - WY

11c. If "Other employment status", please specify:

\_\_\_\_\_

12. Specify the number of years you plan to remain active within the Oral Health Workforce (i.e. years to retirement)

- < 1 year
- 1 - 5 years
- 6 - 10 years
- 11 - 15 years
- 16 - 20 years
- >20 years
- Other

---

12a. If "Other", please specify:

---



**LANGUAGE NEEDS**

13. Are the basic language needs\* of your patients being met during the healthcare encounter?  
 \*Basic language needs means that verbal and / or written communication are provided during the encounter to support the language needs of the individual patient.

Yes  
 No  
 N/A

13a. If Yes, please indicate what resources/services are being used to meet the language needs of your patients. (select all that apply)

Printed materials  
 Interpreter services (on-site)  
 Interpreter services (off-site)  
 Teletypewriter (TTY) services  
 Electronic materials  
 Other  
 None

13ai. If "Other", please specify:

13b. Please describe (in as much detail as possible) the types of translation/interpreter services currently utilized to meet patient language needs.

14. Please indicate which languages are a challenge in the healthcare communication with your patient(s)? (select all that apply)

English  
 Spanish  
 French  
 German  
 Russian  
 Polish  
 Tagalog  
 Japanese  
 Chinese  
 Vietnamese  
 Korean  
 American Sign Language  
 Other (please specify)

14a. If "Other", please specify:

**PRACTICE LOCATION & SERVICE FOR PRIMARY LOCATION**

15. Please provide information for your primary practice location: Practice Type
- Private Practice/Group Practice
  - Healthcare Business/Corporation
  - Academic Setting/Teaching
  - State/Local Government
  - VA or Hospital Clinic
  - Nursing Home/Assisted Living
  - Federally Qualified Health Center/Not for Profit
  - Volunteer Clinic
  - School-based Health Clinic (elementary or high school)
  - Mobile Provider (bring equipment to set-up in high school, grammar school, daycare, etc.).
  - Other

15a. If "Other", please specify:

\_\_\_\_\_

16. Please provide information for your primary practice location: Practice Size
- Solo
  - Small group (2-4 FTE dentists)
  - Large group (5+ FTE dentists)
- (Note: 1 Full Time Equivalent (FTE) = 32 clinical hours)

17. Please provide information for your primary practice location: Location (Zip Code Only)

\_\_\_\_\_

18. Please provide information for your primary practice location: Average hours per week

\_\_\_\_\_

19. Please provide information for your primary practice location: Please indicate the number of clinical dental hygienist staff vacancies (full-time equivalent positions)

\_\_\_\_\_

20. Please provide information for your primary practice location: Is Medicaid accepted at this location?
- Yes
  - No

- 20a. If Yes, are you accepting NEW Medicaid patients?
- Yes
  - No
  - Not sure

21. Please provide information for your primary practice location: Please indicate the barriers you encounter around Medicaid participation. (check all that apply)
- Enrollment Paperwork
  - Need for Prior Approval
  - Frequent Changes in Regulation
  - Denial of Payment
  - Slow Reimbursement
  - On-and-off Eligibility of Patients
  - Patient Characteristics
  - Difficulty in Finding Specialists Who Accept Medicaid
  - Low Reimbursement
  - Other
  - None

---

21a. If "Other", please specify:

---

---

22. Please provide information for your primary practice location: In your practice do you care for children less than 3 years of age?  Yes  
 No  
 N/A

---

23. Please provide information for your primary practice location: In your practice do you provide dental care to any of the following populations: (check all that apply)

- Patients with intellectual or developmental challenges
- New Pediatric patients
- Wheelchair-bound
- Pregnant Patients
- Other special population(s)
- None

---

23a. If "Other special population(s)", please specify:

---

---

24. Please provide information for your primary practice location: In your practice do you use silver diamine fluoride?  Yes  
 No  
 N/A

**PRACTICE LOCATION & SERVICES FOR SECONDARY LOCATION**

25. Do you have a secondary practice location?  Yes  No

25a. Please provide information for your secondary practice location: Practice Type  Private Practice/Group Practice  Healthcare Business/Corporation  Academic Setting/Teaching  State/Local Government  VA or Hospital Clinic  Nursing Home/Assisted Living  Federally Qualified Health Center/Not for Profit  Volunteer Clinic  School-based Health Clinic (elementary or high school)  Mobile Provider (bring equipment to set-up in high school, grammar school, daycare, etc.).  Other

25ai. If "Other", please specify: \_\_\_\_\_

25b. Please provide information for your secondary practice location: Practice Size  Solo  Small group (2-4 FTE dentists)  Large group (5+ FTE dentists)  
(Note: 1 Full Time Equivalent (FTE) = 32 clinical hours)

25c. Please provide information for your secondary practice location: Location (Zip Code Only) \_\_\_\_\_

25d. Please provide information for your secondary practice location: Average hours per week \_\_\_\_\_

25e. Please provide information for your secondary practice location: Please indicate the number of clinical staff vacancies (full-time equivalent positions) \_\_\_\_\_

25f. Please provide information for your secondary practice location: Is Medicaid accepted at this location?  Yes  No

25fi. If Yes, are you accepting NEW Medicaid patients?  Yes  No  Not sure

25g. Please provide information for your secondary practice location: Please indicate the barriers you encounter around Medicaid participation. (check all that apply)  Enrollment Paperwork  Need for Prior Approval  Frequent Changes in Regulation  Denial of Payment  Slow Reimbursement  On-and-off Eligibility of Patients  Patient Characteristics  Difficulty in Finding Specialists Who Accept Medicaid  Low Reimbursement  Other  None

---

25gi. If "Other", please specify:

---

---

25h. Please provide information for your secondary practice location: In your practice do you care for children less than 3 years of age?  Yes  
 No  
 N/A

---

25i. Please provide information for your secondary practice location: In your practice do you provide dental care to any of the following populations (check all that apply)

- Patients with intellectual or developmental challenges
- New Pediatric patients
- Wheelchair-bound
- Pregnant Patients
- Other special population(s)
- None

---

25ii. If "Other special population(s)", please specify:

---

---

25j. Please provide information for your secondary practice location: In your practice do you use silver diamine fluoride?  Yes  
 No  
 N/A



**Expanded Practice, Supports and Barriers**

26. Please indicate all activities you conduct in a typical week (check all that apply)
- Patient care
  - Teaching
  - Administration
  - Community Outreach & Community Education
  - Other

26a. If "Other", please specify:

---

27. Please indicate your ideal work situation:
- Want to work less
  - Want to work more
  - Working the amount wanted

27a. If more or less, please describe the barriers you've encountered to attaining your ideal work situation.

---

28. Please indicate COVID vaccine support you have provided within the past 12 months: (check all that apply)
- Provided COVID-19 patient education
  - Provided vaccine awareness and education
  - Other
  - None

28a. If "Other", please specify:

---

29. What are the top three most significant concerns for your practice? Please number and describe them in the box below (e.g., 1. Lack of oral health education resources).

---

---

# ***APPENDIX II***

## ***ORAL HEALTH WORKFORCE SURVEY***

### ***DATA TABLES AND FIGURES***

---

## DENTISTS

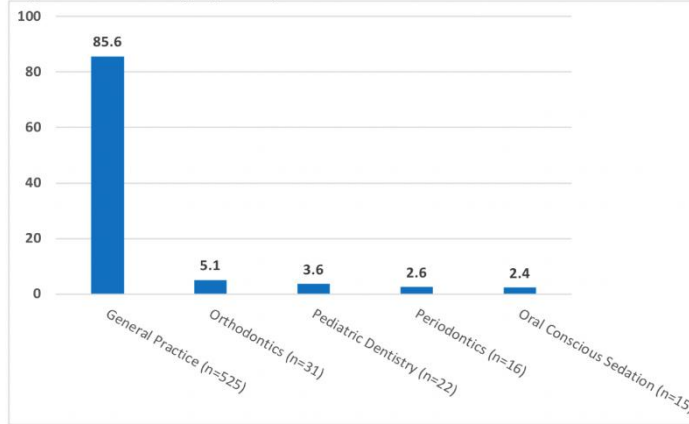
Table 1: Summary of the Active Clinically Practicing Dentists in Illinois 2021/2022		
	Number	Percent
<b>Gender (n=623)</b>		
Male	374	60.0
Female	241	38.7
<b>Age groups (n=623)</b>		
≥65	150	24.1
55-64	181	29.1
35-44	122	19.6
45-54	95	15.2
24-34	75	12.0
<b>Plans to stop practice (n=619)</b>		
Less than 1 year	24	3.9
1-5 years	187	30.2
6-10 years	125	20.2
11-15 years	77	12.4
16 -20 years	59	9.5
More than 20 years	145	23.4
<b>Dentists with secondary practice sites (n=577)</b>		
No	494	85.6
Yes	83	14.4
<b>Hours worked per week** (n=656)</b>		
0-10 hours	54	8.2
More than 10-20 hours	66	10.1
More than 20 -30 hours	109	16.6
More than 30-40 hours	365	55.6
More than 40-50 hours	38	5.8
More than 50 hours	22	3.4
Not applicable/ Other	2	0.3
<b>COVID-19 support* (n=561)</b>		
Provided vaccine awareness and education	306	54.5
Provided COVID-19 patient education	249	44.4
None	192	34.2
Administered COVID-19 vaccine outside of my practice as a volunteer	29	5.2
Planning on administering the COVID-19 vaccine in my practice	19	3.4
Other	15	2.7

\*Multi-selection question

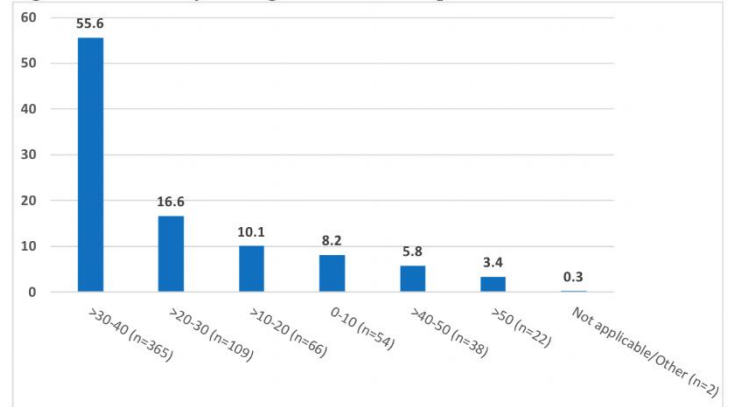
\*\*Out of all practices (Primary and Secondary)

## FIGURES 1 – 5: DENTISTS CLINICALLY PRACTICING IN ILLINOIS

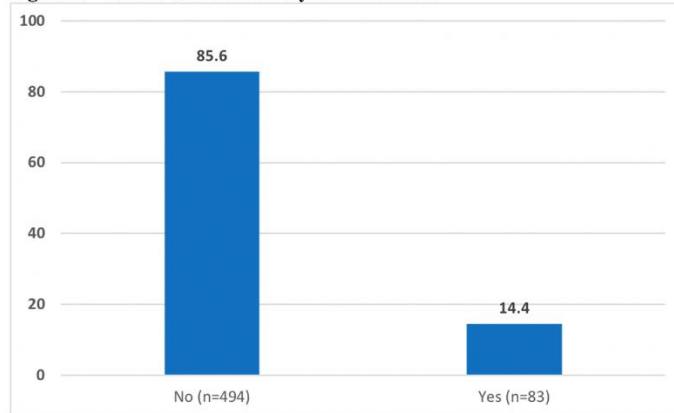
**Figure 1: Dentists by Specialty \***



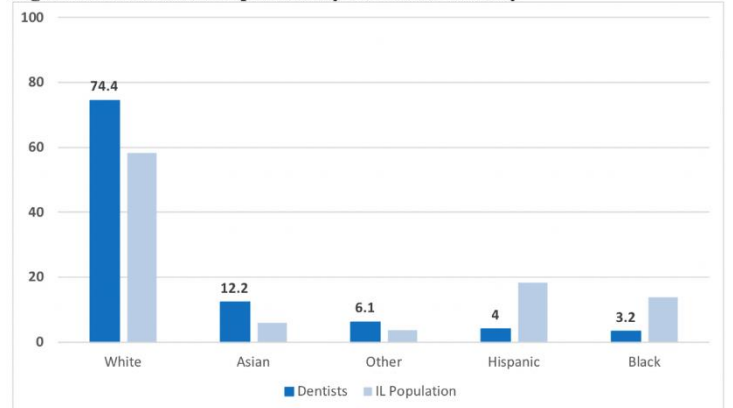
**Figure 2: Dentists by Average Hours Worked per Week\*\***



**Figure 3: Dentists with Secondary Practice Sites**

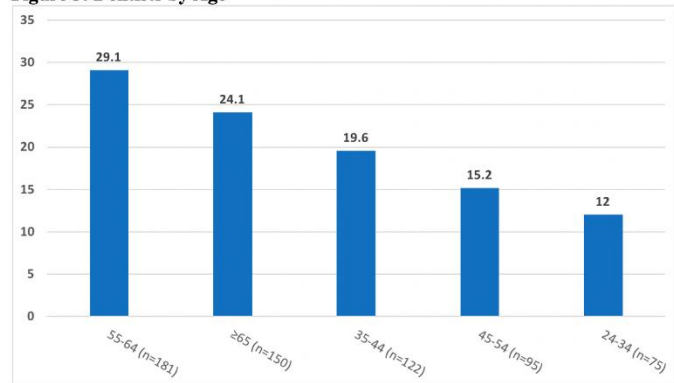


**Figure 4: Dentists and Population by Race and Ethnicity**



*Illinois race population proportions retrieved from 2020 Decennial Census Survey.*

**Figure 5: Dentists by Age**



## DENTAL HYGIENISTS

Table 2: Summary of the Active Clinically Practicing Dental Hygienists in Illinois 2021/2022		
	Number	Percent
<b>Gender (n=499)</b>		
Female	487	97.6
Male	7	1.4
<b>Age groups (n=498)</b>		
≥65	32	6.4
55-64	127	25.5
35-44	95	19.1
45-54	119	23.9
24-34	125	25.1
<b>Plans to stop practice (n=499)</b>		
Less than 1 year	6	1.2
1-5 years	114	22.8
6-10 years	123	24.6
11-15 years	69	13.8
16 -20 years	61	12.2
More than 20 years	125	25.1
<b>Dental hygienists with secondary practice sites (n=462)</b>		
No	380	82.3
Yes	82	17.7
<b>Hours worked per week** (n=540)</b>		
0-10 hours	70	13
More than 10-20 hours	69	12.8
More than 20 -30 hours	91	16.9
More than 30-40 hours	275	50.9
More than 40-50 hours	17	3.1
More than 50 hours	13	2.4
Not applicable/ Other	48	8.9
<b>COVID-19 support* (n=432)</b>		
None	193	44.7
Other	14	3.2
Provided vaccine awareness and education	197	45.6
Provided COVID-19 patient education	158	36.6

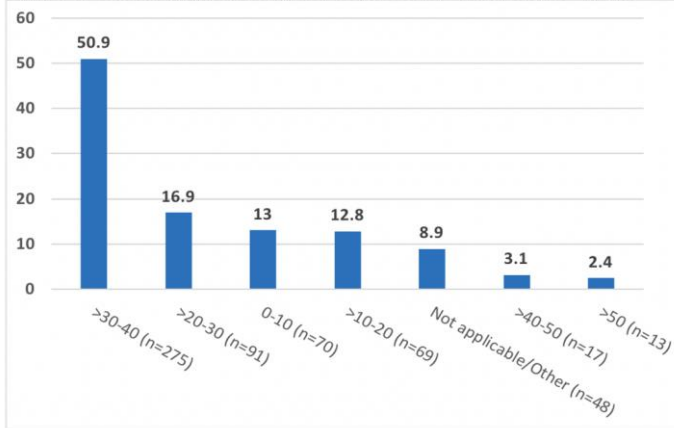
\*Multi-selection question

\*\*Out of all practices (Primary and Secondary)

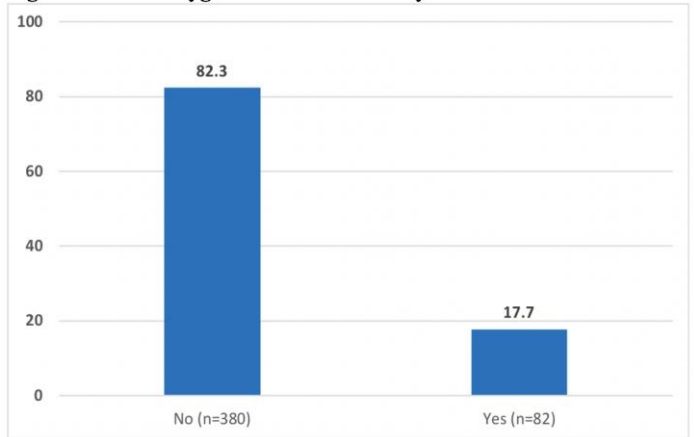


## FIGURES 6 - 9: DENTAL HYGIENISTS CLINICALLY PRACTICING IN ILLINOIS

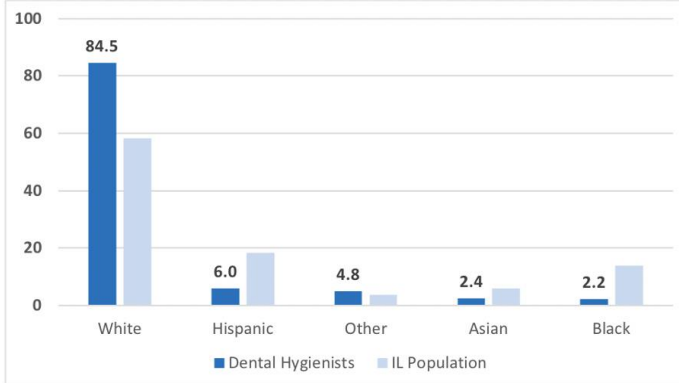
**Figure 6: Dental Hygienists by Average Hours Worked per Week\*\***



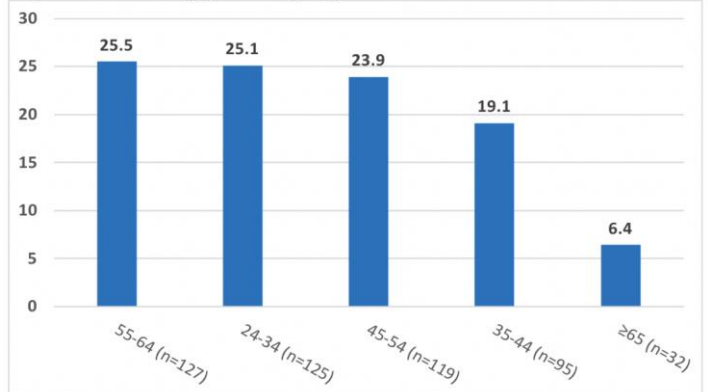
**Figure 7: Dental Hygienists with Secondary Practice Sites**



**Figure 8: Dental Hygienists by Race**



**Figure 9: Dental Hygienists by Age**



*Illinois race population proportions retrieved from 2020 Decennial Census Survey.*

## PRACTICE CHARACTERISTICS AND CHALLENGES, BY ZIP CODE

Table 3: Average Dental Practice Characteristics Across Reported Practice ZIP Codes (n=361), Illinois 2021/2022		
	Number	Percent
<b>Type of practice (Top 3) (n=361)</b>		
Private practice/ Group practice	301	83.4
Other	23	6.4
Federally qualified health center/ Not for profit	20	5.5
Health care business/ Corporation	17	4.7
<b>Size<sup>1</sup> (n=360)</b>		
Solo	170	47.2
Small group	157	43.6
Large group	33	9.2
<b>Staff vacancies (n=300)</b>		
No	259	86.3
Yes	41	13.7
<b>Public Health Collaborative Agreement completed by dental hygienists (n=344)</b>		
No	325	94.5
Yes	19	5.5
<b>Activities (Top 5) * (n= 356)</b>		
Patient care	354	99.4
Administration	207	58.1
Teaching	151	42.4
Community outreach and community education	84	23.6
Other	11	3.1
<b>Use silver fluoride (n=344)</b>		
Yes	192	55.8
No	152	44.2
<b>Barriers to ideal work (Top 3) * (n=144)</b>		
Time	63	43.8
Staffing	52	36.1
Financial	42	29.2

1. Small group refers to practices with 2-4 FTE dentists. Large group refers to 5+ FTE dentists.

\*Multi-selection question

## PRACTICE CHARACTERISTICS AND POPULATIONS SERVED

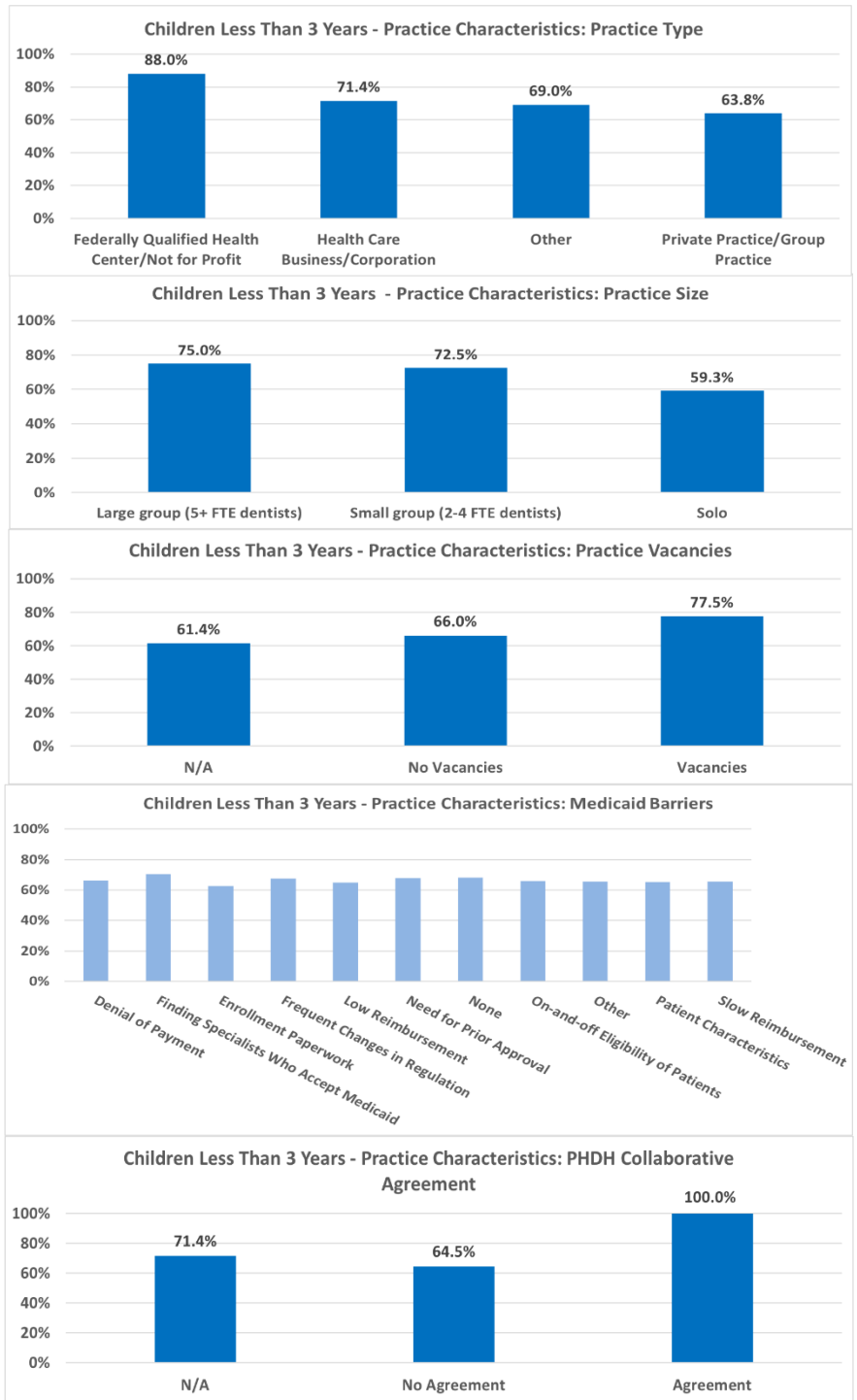
<b>Table 4: Average Dental Practice Special Populations Served Across Reported Practice ZIP codes (n=361), Illinois 2021/2022</b>		
<b>Medicaid</b>	<b>Number</b>	<b>Percent</b>
<b>Medicaid accepted(n=359)</b>		
No	278	77.4
Yes	81	22.6
<b>Accepting new Medicaid patients, if accepting medicaid (n=109)</b>		
Yes	78	71.6
Not Sure	18	16.5
No	13	11.9
<b>Medicaid barriers* (Top 3) (n=338)</b>		
Low reimbursement	254	75.1
Patient characteristics	254	75.1
Slow reimbursement	196	58.0
<b>Other Populations Accepted</b>	<b>Number</b>	<b>Percent</b>
<b>General populations* (n=359)</b>		
Pregnant patients	340	94.7
Wheelchair-bound	337	93.9
Patients with intellectual or developmental challenges	331	92.2
New pediatric patients	319	88.9
Other	51	14.2
None of the above	15	4.2
<b>Children under 3 years old (n=353)</b>		
Yes	235	66.6
No	118	33.4
<b>New adult patients** (n=273)</b>		
Yes	251	91.9
No	22	8.1

1. Small group refers to practices with 2-4 FTE dentists. Large group refers to 5+ FTE dentists.

\*Multi-selection question

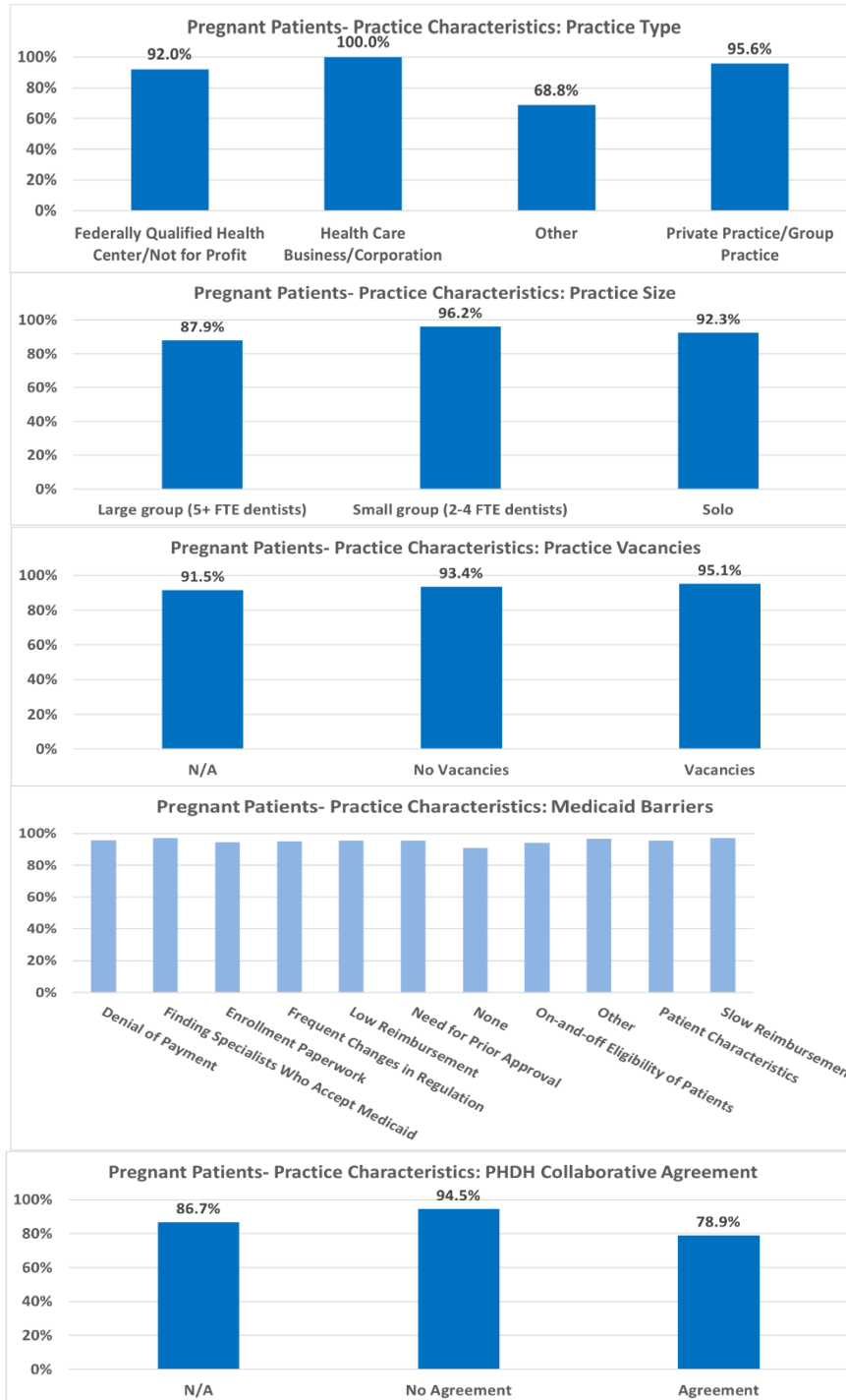
\*\*Limited to Dentists

**Figure 10. Service to Children Less Than 3 Years Old and Average ZIP Code Practice Characteristics**

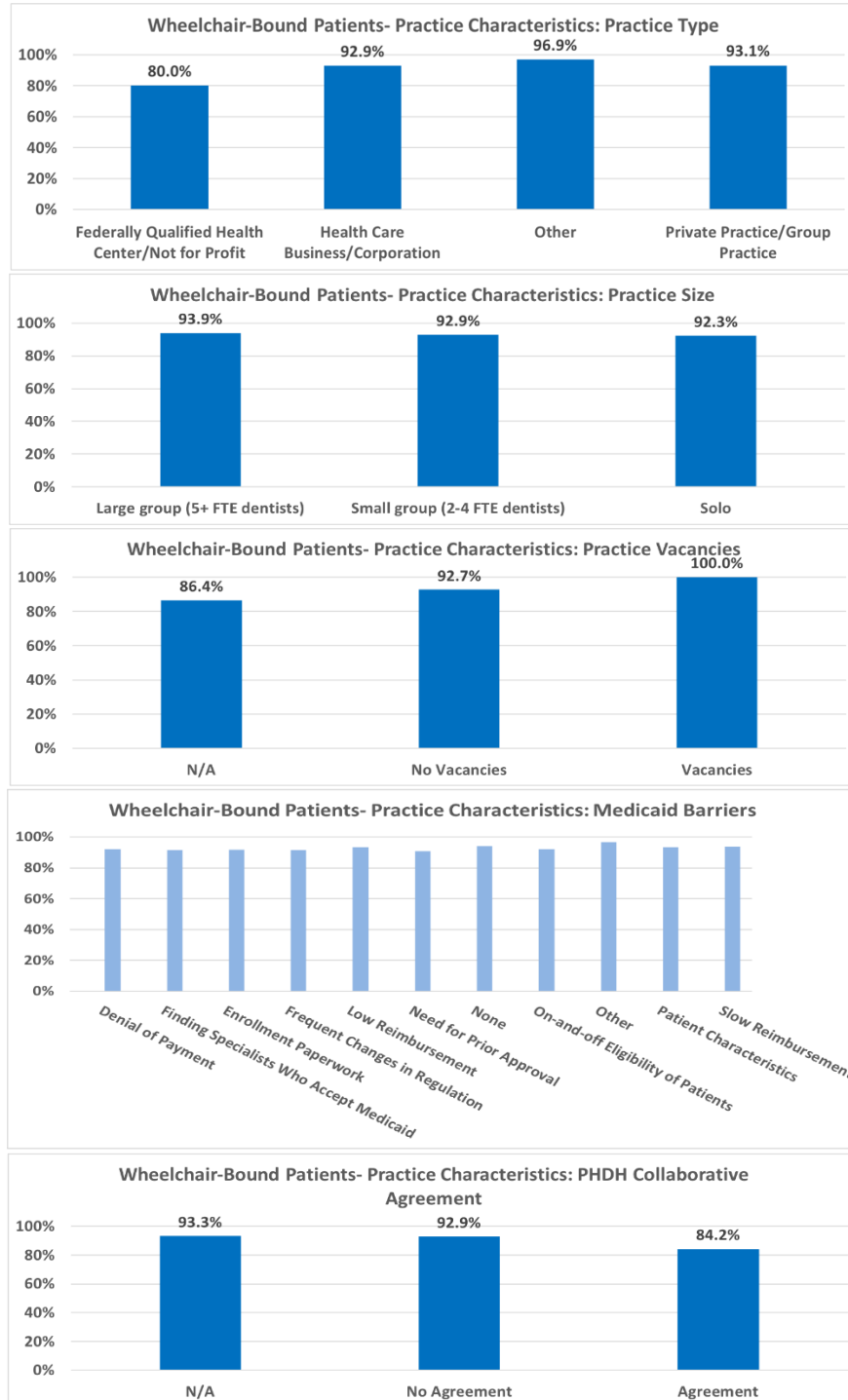


1. Denominator has been calculated out of each total response to a practice characteristic (X% of large group practices serve X population).

**Figure 11. Service to Pregnant Patients and Average ZIP Code Practice Characteristics**

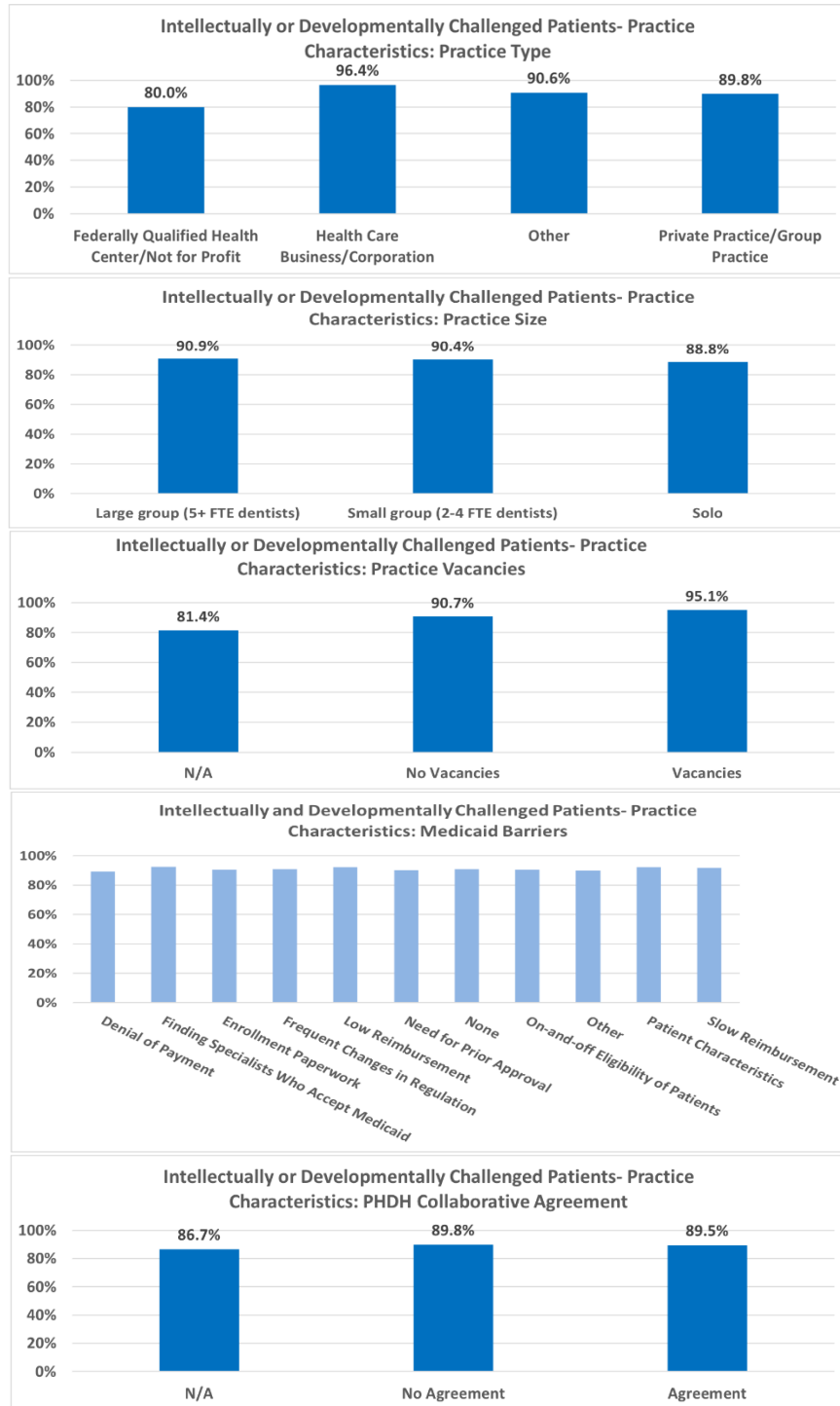


**Figure 12. Service to Wheelchair-Bound Patients and Average ZIP Code Practice Characteristics**

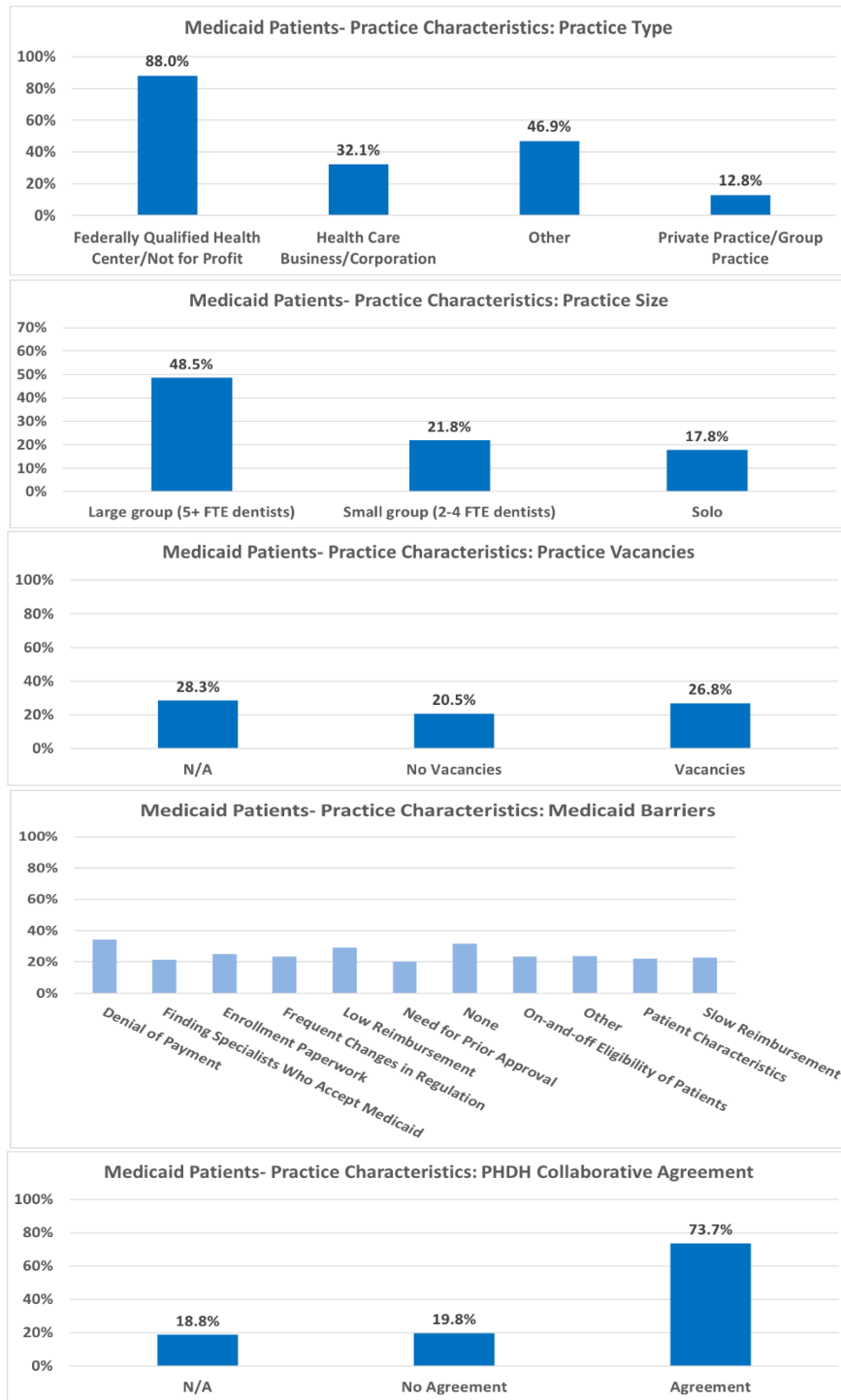




**Figure 13. Service to Patients with Intellectual or Developmental Challenges and Average ZIP Code Practice Characteristics**

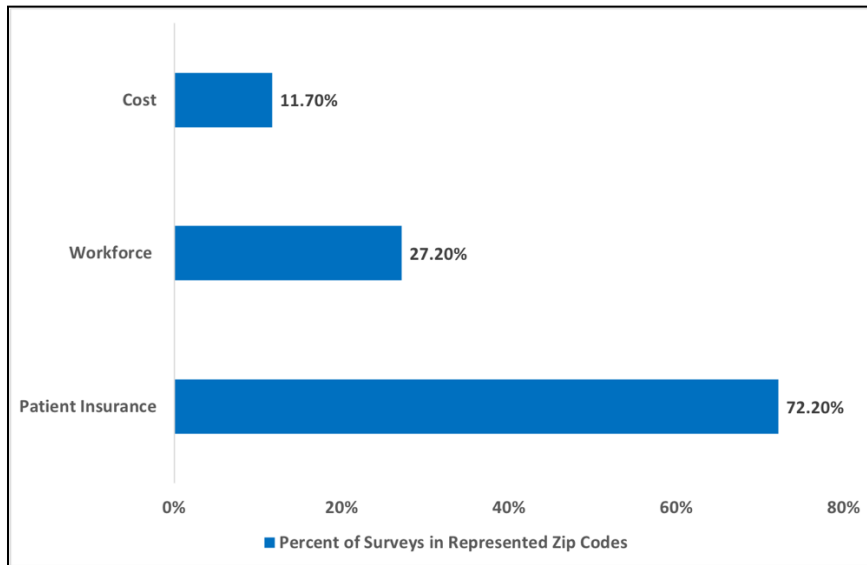


**Figure 14. Service to Patients with Medicaid and Average ZIP Code Practice Characteristics**



## [Dental and Dental Hygienist Practice Concerns]

**Figure 15. Average Top Three Concerns Regarding Dental Practices\***



1. Patient Insurance includes responses pertaining to awareness, limitations, costs of services, and/or coverage. Workforce includes responses pertaining to availability, shortages, and/or turnover. Cost includes responses pertaining to cost of supplies, wages, overhead, and/or equipment.

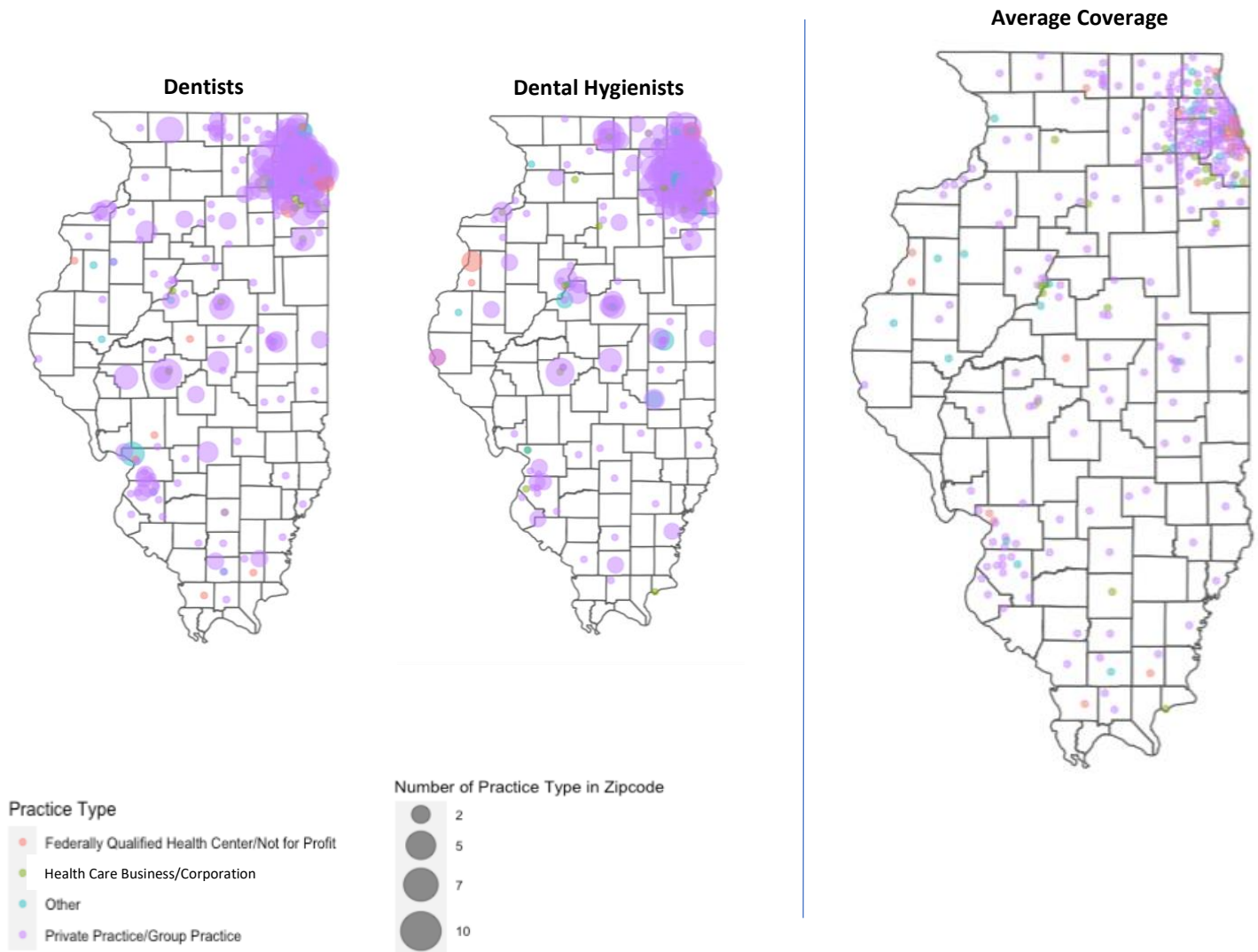
2. Denominator represents all concerns pertaining to unique ZIP codes identified by preferencing dentist surveys, followed by any additional data in unrepresented ZIP codes that might be retrieved from dental hygienist surveys (n=1,116 concerns).

*\*Multi-selection question*

## ORAL HEALTH WORKFORCE TRENDS (ILLINOIS)

<b>Table 5: Oral Health Workforce Trends (2004 – 2022)</b>					
<b>Dentists</b>		<b>2022</b>	<b>2015</b>	<b>2006**</b>	<b>2004</b>
License renewals					
		<b>10,511</b>	9,329	9,470	8,575
Sex					
	Male	<b>60.0%</b>	71%	74.8%	81%
	Female	<b>38.7%</b>	29%	25.2%	19%
Age group					
	≥65	<b>24.1%</b>			50 (Average)
	55-64	<b>29.1%</b>			
	45-54	<b>15.2%</b>			
	35-44	<b>19.6%</b>			
	25-34	<b>12.0%</b>			
Race / Ethnicity					
	Asian	<b>12.2%</b>		10.3%	
	Black/African American	<b>3.2%</b>		3.2%	
	Hispanic/Latino	<b>4.0%</b>		-----	
	White	<b>74.4%</b>	81%	82.0%	85%
Work >25 hours per week					
		<b>55.6%*</b>	68%		72%*
Plan to stop practicing within 10 years					
		<b>54.3%</b>	58%	72.2%	33%
<b>Dental Hygienists</b>		<b>2022</b>	<b>2015</b>	<b>2006**</b>	<b>2004</b>
License renewals					
		<b>8,497</b>	7,779	6,689	5,329
Sex					
	Male	<b>1.4%</b>	1%	0.6%	
	Female	<b>97.6%</b>	99%	94.4%	
Age group					
	Average Age				50 (Average)
Race / Ethnicity					
	Asian	<b>2.4%</b>		----	----
	Black/African American	<b>2.2%</b>		1.3%	0.1%
	Hispanic/Latino	<b>6.0%</b>		3.7%	2.0%
	White	<b>84.5%</b>	94%	95.7%	95.0%
Work >25 hours per week					
		<b>50.9%*</b>	46%	57.2%	46%
Plan to stop practicing within 10 years					
		<b>48.6%</b>	65%	15.6%	----
<b>Data Sources/Notes:</b>					
(2015) <a href="https://www.heartlandalliance.org/wp-content/uploads/2020/02/OHF-Oral-Health-Workforce-Summary-2015-FINAL-2.pdf">https://www.heartlandalliance.org/wp-content/uploads/2020/02/OHF-Oral-Health-Workforce-Summary-2015-FINAL-2.pdf</a>					
(2004 & 2006) <a href="http://www.idph.state.il.us/healthwellness/oralhlth/Dental_Workforce_Census2006_09.pdf">http://www.idph.state.il.us/healthwellness/oralhlth/Dental_Workforce_Census2006_09.pdf</a>					
*Actual measure >30 hrs/week					
**The 2006 dental workforce survey was required for dentists and voluntary for dental hygienists. All other survey years were voluntary for both dentists and dental hygienists.					

## ORAL HEALTH WORKFORCE SURVEY – ADDITIONAL FIGURES



1. Surveys with listed ZIP codes not in Illinois were excluded from this figure (Dental ZIP codes excluded=9; Dental Hygienist ZIP codes excluded=4).

2. "Average Coverage" represents average practice type selected by dentists by ZIP code. For any outstanding ZIP codes unrepresented among dentist surveys, dental hygienist surveys were used to calculate average practice types.

<b>Table AP1: Service to Children Less Than 3 Years Old and General Practice Characteristics Across ZIP Codes (n=353)</b>		
<b>Dentist/Dental Hygienist Practice Characteristics</b>	<b>Number</b>	<b>Percent</b>
<b>Practice Type</b>		
Federally qualified health center/Not for profit	22	88.0
Health care business/Corporation	20	71.4
Other	20	69.0
Private practice/Group practice	173	63.8
<b>Practice Size</b>		
Large group (5+ FTE dentists)	24	75.0
Small	111	72.5
Solo	99	59.3
N/A	1	100
<b>Vacancies</b>		
No	87	66.0
Yes	9	77.5
N/A	22	61.4
<b>Medicaid Barriers</b>		
Denial of payment	109	66.1
Finding a specialist who accepts Medicaid	122	70.5
Enrollment paperwork	97	62.6
Frequent changes in regulation	95	67.4
Low reimbursement	163	64.9
Need for prior approval	101	67.8
None	66	68.0
On-and-off eligibility of patients	89	65.9
Other	19	65.5
Patient characteristics	164	65.3
Slow reimbursement	128	65.6
<b>Public Health Collaborative Agreement</b>		
No	207	64.5
Yes	18	100
N/A	10	71.4

<b>Table AP2: Service to Pregnant Patients and General Practice Characteristics Across ZIP Codes (n=359)</b>		
<b>Dentist/Dental Hygienist Practice Characteristics</b>	<b>Number</b>	<b>Percent</b>
<b>Practice type</b>		
Federally qualified health center/Not for profit	23	92.0
Health care business/Corporation	28	100
Other	22	68.8
Private practice/Group practice	262	95.6
<b>Practice size</b>		
Large group (5+ FTE dentists)	29	87.9
Small	150	96.2
Solo	156	92.3
N/A	0	0
<b>Vacancies</b>		



No	242	93.4
Yes	39	95.1
N/A	54	91.5
<b>Medicaid barriers</b>		
Denial of payment	160	95.8
Finding a specialist who accepts Medicaid	170	97.1
Enrollment paperwork	150	94.3
Frequent changes in regulation	135	95.1
Low reimbursement	242	95.3
Need for prior approval	145	95.4
None	91	91.0
On-and-off eligibility of patients	128	94.1
Other	29	96.7
Patient characteristics	242	95.3
Slow reimbursement	190	96.9
<b>Public Health Collaborative Agreement</b>		
No	307	94.5
Yes	15	78.9
N/A	13	86.7

<b>Table AP3: Service to Wheelchair-bound Patients and General Practice Characteristics Across ZIP Codes (n=359)</b>		
<b>Dentist/Dental Hygienist Practice Characteristics</b>	<b>Number</b>	<b>Percent</b>
<b>Practice type</b>		
Federally qualified health center/Not for profit	20	80.0
Health care business/Corporation	26	92.9
Other	31	96.9
Private practice/Group practice	255	93.1
<b>Practice size</b>		
Large group (5+ FTE dentists)	31	93.9
Small	145	92.9
Solo	156	92.3
N/A	0	0
<b>Vacancies</b>		
No	240	92.7
Yes	41	100
N/A	51	86.4
<b>Medicaid barriers</b>		
Denial of payment	154	92.2
Finding a specialist who accepts Medicaid	160	91.4
Enrollment paperwork	146	91.8
Frequent changes in regulation	130	91.6
Low reimbursement	237	93.3
Need for prior approval	138	90.8
None	94	94.0
On-and-off eligibility of patients	125	91.9
Other	29	96.7
Patient characteristics	237	93.3

Slow reimbursement	184	93.9
<b>Public Health Collaborative Agreement</b>		
No	302	92.9
Yes	16	84.2
N/A	14	93.3

<b>Table AP4: Service to Intellectually/Developmentally Challenged Patients and General Practice Characteristics Across ZIP Codes (n=359)</b>		
<b>Dentist/Dental Hygienist Practice Characteristics</b>	<b>Number</b>	<b>Percent</b>
<b>Practice type</b>		
Federally qualified health center/Not for profit	20	80.0
Health care business/Corporation	27	96.4
Other	29	90.6
Private practice/Group practice	246	89.8
<b>Practice size</b>		
Large group (5+ FTE dentists)	30	90.9
Small	141	90.4
Solo	150	88.8
N/A	1	100
<b>Vacancies</b>		
No	235	90.7
Yes	39	95.1
N/A	48	81.4
<b>Medicaid barriers</b>		
Denial of payment	149	89.2
Finding a specialist who accepts Medicaid	162	92.6
Enrollment paperwork	144	90.6
Frequent changes in regulation	129	90.9
Low reimbursement	234	92.1
Need for prior approval	137	90.1
None	91	91.0
On-and-off eligibility of patients	123	90.4
Other	27	90.0
Patient characteristics	234	92.1
Slow reimbursement	180	91.8
<b>Public Health Collaborative Agreement</b>		
No	292	89.8
Yes	17	89.5
N/A	13	86.7

<b>Table AP5: Service to Medicaid Patients and General Practice Characteristics Across ZIP Codes (n=359)</b>		
<b>Dentist/Dental Hygienist Practice Characteristics</b>	<b>Number</b>	<b>Percent</b>
<b>Practice Type</b>		
Federally qualified health center/Not for profit	22	88.0

Health care business/Corporation	9	32.1
Other	15	46.9
Private practice/Group practice	35	12.8
<b>Practice size</b>		
Large group (5+ FTE dentists)	16	48.5
Small	34	21.8
Solo	30	17.8
N/A	1	100
<b>Vacancies</b>		
No	53	20.5
Yes	11	26.8
N/A	17	28.3
<b>Medicaid barriers</b>		
Denial of payment	39	34.3
Finding a specialist who accepts Medicaid	60	21.5
Enrollment paperwork	34	24.8
Frequent changes in regulation	35	23.3
Low reimbursement	59	29.0
Need for prior approval	44	20.0
None	20	31.6
On-and-off eligibility of patients	43	23.3
Other	7	23.7
Patient characteristics	60	21.9
Slow reimbursement	43	22.6
<b>Public Health Collaborative Agreement</b>		
No	64	19.8
Yes	14	73.7
N/A	3	18.8

<b>Table AP6: Top Concerns Across Dental and Dental Hygienists Surveys (n = 1,125)</b>		
<b>Top Concerns</b>	<b>Number</b>	<b>Percent</b>
<b>Patient insurance (awareness, limitations, and cost of services/coverage)</b>	1608	45.6%
<b>Other</b>	417	11.8%
<b>Workforce (availability, shortages, turnover, etc.)</b>	366	10.4%
<b>Cost of supplies/wages/overhead/outdated equipment</b>	258	7.3%
<b>No concerns</b>	159	4.5%
<b>Scheduling</b>	131	3.7%
<b>Low reimbursement rates/ Delayed payment</b>	119	3.4%
<b>Poor patient oral health education/commitment</b>	119	3.4%
<b>N/A</b>	102	2.9%
<b>Coverage/patient eligibility</b>	60	1.7%
<b>Shortage of patients</b>	50	1.4%

<b>Medicaid approval</b>	44	1.2%
<b>Burnout</b>	27	0.8%
<b>Insurance/Government regulations</b>	20	0.6%
<b>Corporate/Small practice competition</b>	18	0.5%
<b>Lengthy/Complicated claim filing</b>	11	0.3%
<b>Poor insurance/Provider relationship</b>	10	0.3%
<b>Invalid referrals</b>	8	0.2%
<b>Patients not paying</b>	2	0.1%
<b>TOTAL</b>	<b>3,529</b>	<b>100%</b>

<b>Table AP7: Language Needs/Support Across Dental and Dental Hygienists Surveys (n = 1,125)</b>		
<b>Language Needs/Support</b>	<b>Number</b>	<b>Percent</b>
<b>Language needs met (n=1,088)</b>		
Yes	940	86.4
No	72	6.6
N/A	76	7.0
<b>Language resources* (n=940)</b>		
Printed materials	610	64.9
Interpreter services	382	40.6
Electronic materials	269	28.6
None	81	8.6
Interpreter services (Off site)	66	7.0
Other	172	18.3
<b>Translation services* (n=681)</b>		
Internal translating services	336	49.3
None	186	27.3
External translating services	141	20.7
Other	113	16.6
Familial/Caregiver assistance	92	13.5
Translating apps/Software	90	13.2
<b>Language challenges* (n=1,125)</b>		
Other	966	85.9
Spanish	525	46.7
American Sign Language	197	17.5
Chinese	197	17.5
Polish	190	16.9
Vietnamese	155	13.8

\*Multi-selection question

<b>Table AP8: School / Program Attended and Degree(s) Across Dental and Dental Hygienists (n = 1,125)</b>		
<b>Dentists</b>	<b>Number</b>	<b>Percent</b>
<b>Degree(s)*(n=620)</b>		
DDS_DMD	617	99.5
MS	70	11.3
Other	21	3.4
PhD	6	1.0
DrPH	1	0.2
<b>Dental Hygienists</b>	<b>Number</b>	<b>Percent</b>
<b>School/Program attended (n=492)</b>		
Other <sup>1</sup>	87	17.7
Harper College	67	13.6
Southern Illinois University	60	12.2
Prairie State College	55	11.2
Parkland College	36	7.3
Illinois Central College	33	6.7
Lake Land Community College	31	6.3
College of DuPage	26	5.3
Loyola University of Chicago	22	4.5
Kennedy King College	18	3.7
College of Lake County	16	3.3
Rock Valley College	14	2.8
Lewis and Clark Community College	11	2.2
Carl Sandburg College	10	2.0
City Colleges of Chicago-Malcolm X	10	2.0
<b>Degree(s)*(n=501)</b>		
Associates	426	85.0
Bachelors	144	28.7
Masters	15	3.0
Other	7	1.4

1. Any school or program with <10 counts.  
 \*Multi-selection question

**Table AP9: BRFSS Classifications\* by Practice Type (n = 352)**

	FQHC / Not for Profit	Health Care Business / Corporation	Other	Private Practice / Group Practice
<b>Chicago</b>	28.26%	13.04%	4.35%	54.35%
<b>Collar</b>	3.76%	7.52%	5.26%	83.46%
<b>Cook</b>	1.23%	8.64%	9.88%	80.25%
<b>Rural</b>	6.09%	5.22%	8.70%	80.00%
<b>Urban</b>	3.06%	7.14%	5.10%	84.69%
<b>Grand Total</b>	<b>6.13%</b>	<b>7.61%</b>	<b>6.77%</b>	<b>79.49%</b>

**Table AP10: BRFSS Classifications\* by Practice Size (n = 351)**

	Large group (5+ FTE dentists)	Small group (2-4 FTE dentists)	Solo
<b>Chicago</b>	8.89%	53.33%	37.78%
<b>Collar</b>	12.03%	47.37%	40.60%
<b>Cook</b>	13.58%	38.27%	48.15%
<b>Rural</b>	2.61%	40.00%	57.39%
<b>Urban</b>	6.12%	41.84%	52.04%
<b>Grand Total</b>	<b>8.47%</b>	<b>43.43%</b>	<b>48.09%</b>

**Table AP11: BRFSS Classifications\* by Practices Serving Medicaid Patients (n = 351)**

	Yes	No
<b>Chicago</b>	41.30%	58.70%
<b>Collar</b>	17.29%	82.71%
<b>Cook</b>	12.35%	87.65%
<b>Rural</b>	20.35%	79.65%
<b>Urban</b>	18.56%	81.44%
<b>Grand Total</b>	<b>19.79%</b>	<b>80.21%</b>

\*BRFSS Classifications

[https://www.huduser.gov/portal/datasets/usps\\_crosswalk.html](https://www.huduser.gov/portal/datasets/usps_crosswalk.html) (4th quarter 2021)

Chicago Zips identified using: <https://data.cityofchicago.org/Facilities-Geographic-Boundaries/Boundaries-ZIP-Codes/gdcf-axmw>



## REFERENCES

---

- (1) American Student Dental Association. Available at <https://www.asdanet.org/index/get-into-dental-school/before-you-apply/u-s-dental-schools>. Accessed August 31, 2021.
- (2) Illinois Oral Health Plan IV: Eliminating Inequities in Oral Health (2021 – 2025). Accessed July 22, 2022. <https://dph.illinois.gov/topics-services/prevention-wellness/oral-health/oral-health-plans/oral-health-plan-iv.html>
- (3) Illinois Oral Health Surveillance Plan 2021-2025. Available at <https://www.dph.illinois.gov/topics-services/prevention-wellness/oral-health>. Accessed July 27, 2021.
- (4) Healthy People 2030, Oral Health Objectives. Available at <https://health.gov/healthypeople/objectives-and-data/browse-objectives/oral-conditions>. Accessed July 22, 2022.
- (5) Illinois Department of Public Health (IDPH), Population Projections. Illinois, Chicago and Illinois Counties by Age and Sex: July 1, 2015 to July 1, 2030 (2019 edition). Available at: <https://dph.illinois.gov/content/dam/soi/en/web/idph/files/publications/population-projections-report-2010-2030.pdf>. Accessed June 8, 2022.
- (6) Oral Health in America: Advances and Challenges: Executive Summary [Internet]. Bethesda (MD): National Institute of Dental and Craniofacial Research (US); 2021 Dec. Available from: <https://www.ncbi.nlm.nih.gov/books/NBK576536/>.
- (7) Health Resources and Services Administration (HRSA) Health Workforce, Oral Health Workforce Projections, 2017 – 2030: Dentists and Dental Hygienists. Available at: <https://bhw.hrsa.gov/sites/default/files/bureau-health-workforce/data-research/oral-health-2017-2030.pdf>. Accessed November 21, 2022.
- (8) Health Resources and Services Administration (HRSA). Sex, Race, and Ethnic Diversity of U.S. Health Occupations (2011 – 2015). August 2017. Available at: <https://bhw.hrsa.gov/sites/default/files/bureau-health-workforce/data-research/diversity-us-health-occupations.pdf>. Accessed November 21, 2022.