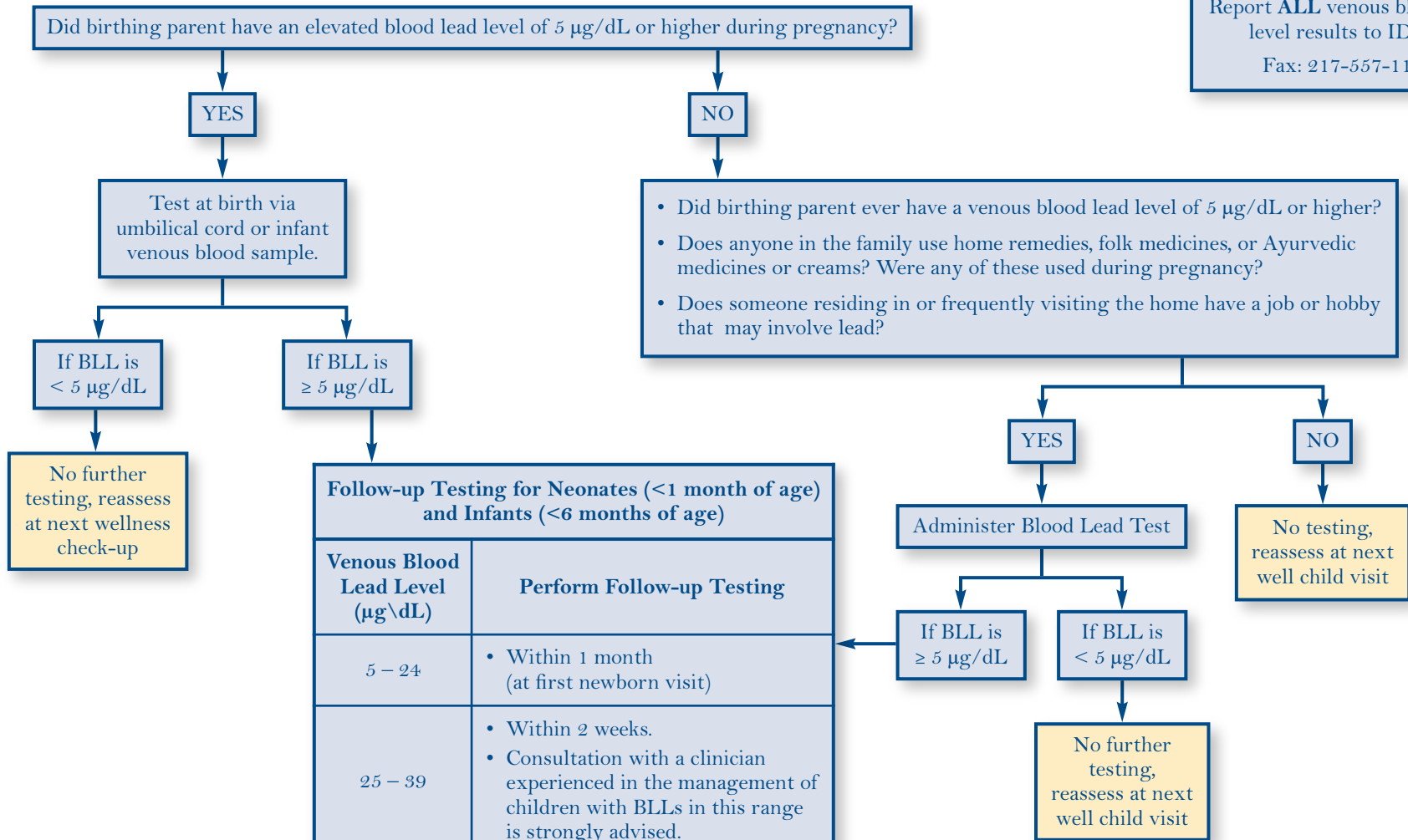




# Infant and Neonate Evaluation & Testing Algorithm

Report ALL venous blood lead level results to IDPH.  
Fax: 217-557-1188



Follow-up Testing for Neonates (<1 month of age) and Infants (<6 months of age)	
Venous Blood Lead Level (µg/dL)	Perform Follow-up Testing
5 – 24	<ul style="list-style-type: none"> <li>• Within 1 month (at first newborn visit)</li> </ul>
25 – 39	<ul style="list-style-type: none"> <li>• Within 2 weeks.</li> <li>• Consultation with a clinician experienced in the management of children with BLLs in this range is strongly advised.</li> </ul>
≥ 40	<ul style="list-style-type: none"> <li>• Within 24 hours, then frequent intervals depending on clinical intervention and trend blood lead levels</li> <li>• Prompt consultation with a clinician experienced in management of children with BLLs in this range is strongly advised.</li> </ul>

**All confirmed venous blood lead levels of ≥5 µg/dL will receive case management services from IDPH.**